



The User's Guide

Integrated System for the Monitoring of Trade in Medicinal Products (ZSMOPL)

Specification of messages for the purpose of software developers

| Metrics | | | |
|--------------|-----------------|-------------------|------------|
| Owner | CeZ | | |
| Authors | CeZ | | |
| Approved by: | Project Manager | Approved on: | 31/07/2024 |
| Version | 2.66 | Document status | Approved |
| Prepared on: | 01/09/2015 | Last modified on: | 31/07/2024 |

| Change history | | | |
|----------------|---------------------------------------|-------------|----------------------------------------------------------------------------------------------------------------------------------------------------------------------------------------------------------------------------------------------------------------------------------------------------------------------------------------------------------------------------------------------------------------------------------------------------------------------|
| Changed on: | Version | Changed by: | Description of document change: |
| 2022-01-12 | 2.48 System version ZSMOPL: 1.27.0 | CeZ | Adding a new warning TRZB8 – "The shortage report quantity limit for the product has been exceeded" |
| 2022-03-21 | 2.49 System version ZSMOPL 1.27.1 | CeZ | Adding the TROSP0Z44 validation for the STN transaction if it includes the transaction item without stocks. Improving the validation of TROSP0Z83 - differentiation of the product series Improving the validation of TROSP0Z85 - differentiation of the product series Disable TROSP0Z75 validation for STN transactions |
| 2022.04.11 | 2.50 System version ZSMOPL 1.28.0 | CeZ | Adding the TROS59 validation – The source document number was not specified Adding the TROS60 validation – The healthcare facility indicated in the transaction as the entity of the other party currently in the Register of Entities Performing Medicinal Activities does not have the status of "Active" The content of the message for TRZB2 has been changed to "The number of no product has been given with a value less than or equal to zero" |
| 2022.08.24 | 2.51 | CeZ | Adding the planned delivery location for the message in the Delivery planning message. |

| Change history | | | |
|----------------|------------------------------|-------------|------------------------------------------------------------------------------------------------------------------------------------------------------------------------------------------------------------------------------------------------------------------------------------------------------------------------------------------------------------------------------------------------------------------------|
| Changed on: | Version | Changed by: | Description of document change: |
| | System version ZSMOPL 1.29.0 | | <p>Adding new errors and warnings:</p> <ul style="list-style-type: none"> • TRPD14 (Error) • TRPDPLAN9 (Error) • TRPDPLAN10 (Error) • TRPDPLAN14 (Error) • TRPDPLAN15 (Error) • TRPDPLAN16 (Error) • TRPDPLAN17 (Error) • TRPDPLAN18 (Warning) • TRPDPLAN19 (Warning) • TRPDPLAN20 (Warning) <p>Delete error TRPD5</p> |
| 2022.11.09 | System version ZSMOPL 1.29.1 | | <p>Adding new errors and warnings:</p> <ul style="list-style-type: none"> • TROS61 (Error) |
| 2022.12.05 | System version ZSMOPL 1.29.2 | CeZ | <p>Adding new errors and warnings:</p> <ul style="list-style-type: none"> • TRPDPLAN21 (Error) |
| 2023.03.27 | System version ZSMOPL 1.30 | CeZ | <p>Expanding the message about turnovers and statuses with the approval number of the president of the URPL.</p> <p>New errors and warnings:</p> <ul style="list-style-type: none"> • TROSPOZ86 < numerZgodyPrezesa > - The approval number of the president of the URPL was not found in the registry of monitored products. |
| 2023.12.04 | System version ZSMOPL 1.33 | CeZ | <ul style="list-style-type: none"> • Added a new warning TROS62 - Invalid transaction type. To report inventory, use the INW - inventory transaction • The INW transaction replaces the IR+ and IR- transactions • Changes in the scope of integration with registers (without affecting the end user of the portal and integrators) |

| Change history | | | |
|----------------|------------------------------|-------------|--------------------------------------------------------------------------------------------------------------------------------------------------------------------------------------------------------------------------------------------------------------------------------------------------------------------------------------------------------------------------------|
| Changed on: | Version | Changed by: | Description of document change: |
| 2024.02.19 | System version ZSMOPL 1.33.1 | CeZ | <p>New errors and warnings:</p> <ul style="list-style-type: none"> • TROSP0Z86 (Warning) • TROSP0Z87 (Error) • TROSP0Z88 (Warning) • TROSP0Z89 (Warning) • TROSP0Z90 (Error) • TRPDPLAN22 (Error) |
| 2024.04.14 | System version ZSMOPL 1.33.2 | CeZ | <p>New errors and warnings:</p> <ul style="list-style-type: none"> • TROZPOZ91 (Warning) <p>Modification of errors and warnings:</p> <ul style="list-style-type: none"> • TROSP0Z75 (Error) • TROSP0Z71 (Error) • TROSP0Z78 (Error) <p>Changed error content for KM1 validation</p> |
| 2024.07.11 | System version ZSMOPL 1.33.2 | CeZ | <p>Modification of errors and warnings:</p> <ul style="list-style-type: none"> • The STN transaction will not cause the TROSP0Z78 error if it is associated with WUT, WZR, PZR, PRO transactions and inventory transactions with zero inventory levels INW, IR-, IR+ • The PRO transaction for an expired product will not trigger the TROSP0Z78 error |
| 2024.07.31 | Wersja systemu ZSMOPL 1.33.3 | CeZ | <p>Modification of validation rules for messages:</p> <ul style="list-style-type: none"> • The MWO transaction for an expired product will not trigger the TROSP0Z78 error. • Extend the expiration date period to 5 years for validation TROSP0Z81. |



Spis treści

| | | |
|--------|------------------------------------------------------------------|----|
| 1. | INTRODUCTION | 6 |
| 2. | GLOSSARY OF TERMS | 7 |
| 3. | MESSAGING MODEL | 11 |
| 4. | WEBSERVICE OPERATION CALL..... | 13 |
| 5. | MESSAGE STRUCTURE | 19 |
| 5.1. | DESCRIPTION OF HELPER TYPES/CLASS..... | 19 |
| 5.1.1. | <i>Trade and stock message</i> | 21 |
| 5.1.2. | <i>Shortage report message</i> | 32 |
| 5.1.3. | <i>Delivery planning message</i> | 33 |
| 5.1.4. | <i>Status check message</i> | 36 |
| 5.1.5. | <i>State check message</i> | 36 |
| 6. | MESSAGE VALIDATION RULES | 38 |
| 6.1. | MESSAGE VALIDATION FOR COMPLIANCE WITH TEMPLATE | 38 |
| 6.2. | MESSAGE HEADER VALIDATION | 39 |
| 6.3. | VALIDATION OF TRANSACTIONS IN THE TRADE AND STOCK MESSAGE..... | 41 |
| 6.4. | TRANSACTION VALIDATION IN THE SHORTAGE REPORT MESSAGE | 49 |
| 6.5. | TRANSACTION VALIDATION IN THE DELIVERY PLANNING MESSAGE..... | 50 |
| 7. | MESSAGE HEADER SPECIFICATION | 52 |
| 8. | MESSAGE STATUS..... | 54 |
| 8.1. | EXAMPLE OF A SERVICE CALL | 54 |
| 8.2. | EXAMPLES OF CORRECT ANSWERS | 55 |
| 8.3. | GETSTATUS ERROR MESSAGES | 58 |
| 9. | STOCK INQUIRY..... | 60 |
| 9.1. | EXAMPLE OF A SERVICE CALL | 60 |
| 9.2. | SERVICE CALL AND RESPONSE EXAMPLES WITH CORRECT PARAMETERS | 61 |
| 9.3. | SERVICE GETSTAN ERROR MESSAGES | 63 |
| 10. | STN TRANSACTION | 64 |

1. Introduction

This document contains the description of information structure of the ZSMOPL messages. The document was drawn-up for the purposes of developers of software sending data to the ZSMOPL system in effect of detailed analysis carried out by the system contractor in Procurement no. 3 to the Contract No. CSIOZ/121/2014.



2. Glossary of terms

Types of entities reporting the trade in monitored products. The classification below is used at the stage or registration of a business entity in the ZSMOPL. When a specific business entity is displayed in two categories e.g. healthcare entity running and entity managing public pharmacy, it should be registered as two separate reporting entities – one of them as a AP-type entity and the second one as PW (in compliance with the description entered in the table below).

| Symbol | Description | Reporting obligation |
|--------|--------------------------------------------------------------------------------------------------------------------------------------------|--------------------------------------------------------|
| AP | A business entity running retail pharmacies, dispensaries, company's pharmacies, other outside PA and PF categories, within its structure. | Trade and stock message. Shortage report message. |
| HU | A business entity running pharmaceutical wholesales within its structure. | Trade and stock message. |
| PW | An entity conducting healthcare activity | Trade and stock message. Shortage report message. |
| PO | Marketing authorisation holder. | Trade and stock message. Delivery planning message. |

Types of places of business of the reporting entity.

| Symbol | Description |
|--------|-----------------------------------------------------------------------------------------|
| MPDAP | A pharmacy holding its ID in the Register of Pharmacies. |
| MPDHU | A pharmaceutical wholesale holding its ID in the Register of Pharmaceutical Wholesales. |

Connections between entities and places of business

| Type of reporting entity | idBiznesowy of reporting entity | Type of reporting entity | idBiznesowyMPD of reporting entity | RodzajMPD of reporting entity |
|----------------------------------------------------|---------------------------------|--------------------------|------------------------------------|-------------------------------|
| Marketing authorization holder, importer, producer | NIP or VATIN | PO | is not filled | is not filled |
| Medical entity | Number in RPWDL | PW | Pharmacy ID | MPDAP |
| Generally accessible pharmacy | REGON | AP | Pharmacy ID | MPDAP |
| Pharmaceutical wholesaler | REGON | HU | Wholesaler ID | MPDHU |

Types of entities with which the transaction of trade in medicinal products is made. The following table indicates symbols and terms that are not classification of reporting entities however refer to classification of the other trading party in relation to the reporting entities.

| Symbol | Descriptions |
|--------|-----------------------------------------------------------------------------------------------------------------------------------------------|
| AP | An entity running a pharmacy (public, pharmacy point). |
| FP | Polish business entity other than PO, HU, AP, PW, PR. |
| FZH | Foreign business entity running a pharmaceutical wholesale. |
| FZI | Foreign business entity other than classified above. |
| FZO | Foreign business entity with a status of marketing authorisation holder. |
| HU | Entity running a pharmaceutical wholesale. |
| OF | Natural person. |
| PO | Marketing authorisation holder. |
| PR | Healthcare entity performing its activity as individual professional practice or group practice of physicians, dentists, nurses and midwives. |
| PW | An entity conducting healthcare activity other than PR. |

Types of place of business of the other party. The other party = the entity with which the transaction is concluded.

| Symbol | Description |
|--------|------------------------------------------------------------------------------------------------------------------------------------------------|
| MPDAP | A pharmacy with an identifier in the Pharmacy Register. |
| MPDHU | A pharmaceutical wholesaler with an identifier in the Register of Pharmaceutical Wholesales. |
| MPDPL | Healthcare facility of the medicinal entity with an identifier (REGON 14-character) in the Register of Entities Performing Medicinal Activity. |

Connections between other party entities and their places of business

| Type of other party entity | idBiznesowyPodm DrugaStrona | Type of reporting entity | IdMPDPodm DrugaStrona IdBiznesowy | IdMPDPodmDrugaStro na RodzajMPD PodmiotuRaportujace go |
|------------------------------------------------------|-----------------------------|--------------------------|-----------------------------------|--------------------------------------------------------|
| Marketing authorization holder, importer, producer | NIP | PO | Is not filled | Is not filled |
| Medical entity, transaction with a hospital pharmacy | REGON | PW | Pharmacy ID | MPDAP |
| Medical entity, transaction with a medical facility | REGON | PW | REGON14 | MPDPL |
| Generally accessible pharmacy | REGON | AP | Pharmacy ID | MPDAP |
| Pharmaceutical wholesaler | REGON | HU | Wholesaler ID | MPDHU |
| Foreign entity | VATIN | FZO, FZH lub FZI | Is not filled | Is not filled |
| Medical practice | REGON | PR | Is not filled | Is not filled |
| Another polish entity | REGON | FP | Is not filled | Is not filled |

Types of transactions in the trade and stock message.

| Symbol | Description | Document requires specification of the other party to trade: - yes - no (in-house document) | Transaction category |
|--------|-------------------------------------------------------------------------------------|---------------------------------------------------------------------------------------------------|----------------------------|
| ZKU | ZKU Purchase | yes | Purchase |
| SPR | SPR Sales | yes | Sale |
| PKU | PKU Warehouse reception | yes | Warehouse Reception |
| WPR | WPR Warehouse release | yes | Warehouse Release |
| WZR | WZR Return to supplier | yes | Warehouse Release |
| PZR | PZR Acceptance of return from the recipient | yes | Warehouse Reception |
| MWG | MGW Recall in the CPI decision | no | Availability status change |
| WWG | WWG Return to the supplier (withdrawal GIF) | yes | Warehouse Release |
| PWY | PWY Acceptance of return from recipient (withdrawal GIF) | yes | Warehouse Reception |
| PM+ | PM+ Warehouse transfer within the assets of business entity – to increase in stock. | yes | Warehouse Reception |
| WM- | WM- Warehouse transfer within the assets of business entity – to decrease in stock. | yes | Warehouse Release |
| PZO | PZO Batch release | no | Warehouse Reception |
| WUT | WUT Disposal due to expiry date | no | Warehouse Release |
| WUI | WUI Disposal for other reason than expiry date. | no | Warehouse Release |
| WRO | WRO Internal spending for hospital ward | no | Warehouse Release |
| PRO | PRO Acceptance of a return from the hospital ward | no | Warehouse Reception |

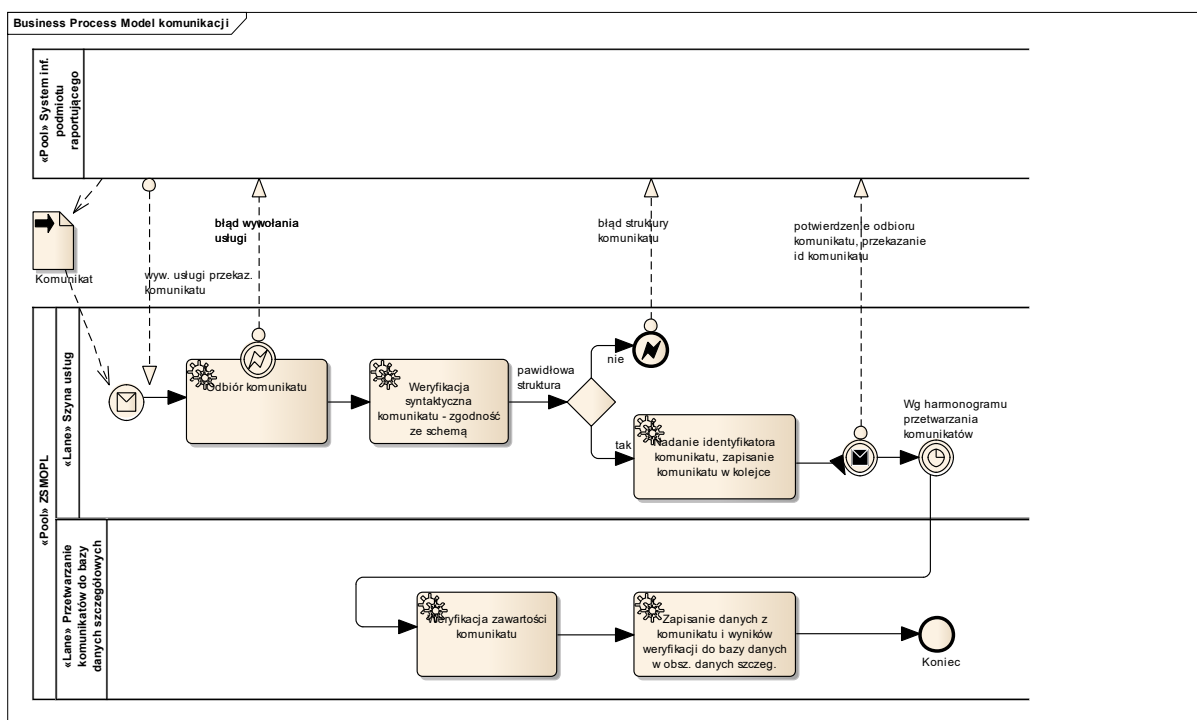
| Symbol | Description | Document requires specification of the other party to trade: - yes - no (in-house document) | Transaction category |
|--------|---------------------------------------------------------------------------------------------------------------------|---------------------------------------------------------------------------------------------------|----------------------------|
| WRW | WRW Other internal spending | no | Warehouse Release |
| MWO | MWO Suspension in trade | no | Availability status change |
| MDO | MDO Authorised to the market | no | Availability status change |
| IBO | IBO Opening balance | no | Opening Balance |
| IR+ | IR+ Stock difference – to increase in stock. The IR+ transaction is replaced by the INW transaction. | no | Inventory |
| IR- | IR- Stock difference – to decrease in stock. The IR- transaction is replaced by the INW transaction. | no | Inventory |
| INW | INW Inventory – to increase or decrease the stock level. The INW transaction replaces the IR+ and IR- transactions. | no | Inventory |
| STN | STN availability | No | Stock status |

* Usage of STN transactions is described in chapter 10



3. Messaging model

The diagram below presents the Messaging model between the IT system of the reporting entity and the ZSMOPL system.



Messaging model is of universal nature – applies to all types of messages passed from the IT systems of the reporting entities to the ZSMOPL.

- The IT system calls the ZSMOPL message passing service. In the case of errors at the stage of service call, the IT system of the reporting entity obtains an error report.
- The first stage of message validation is checking compliance with the passed message with the XML Schema. In the case of any identified non-compliance with the format, the entire message is rejected – no message items are analysed (CeZ shall publish the XML Schema used at this stage of validation to enable the software vendors checking the compliance of generated messages by their own). When the message structure error is detected, the entire message is rejected (no message items are analysed) and the IT system of the reporting entity obtains a structure error report. If the message structure is valid, the ZSMOPL service bus generates the message ID, saves the message in the queue and sends back information containing the message reception confirmation and generated message ID to the IT system of the reporting entity.
- Messages stored in the message queue are processed asynchronously as scheduled. Processing consists in validation of message for compliance with the validity rules. Logical description of rules is entered in this document below, respectively for the message type. The check results in confirmed validity or identified invalidity in the form of error or warning.
- The status of the message sent to ZSMOPL and a possible list of errors can be checked in two ways:
 - after logging into the ZSMOPL portal - by using the “Komunikaty” (“Messages”) tile. The results of checking the messages are made available for reporting entities on the ZSMOPL

Portal. Portal users, representatives of reporting entities can review the correctness results with accuracy to entire messages and individual transactions as part of messages and positions within the transaction. If an error is found in the message item (in a single transaction), the entire message is treated as erroneous. Verification results are given in quantitative form (number of transactions in the message, number of errors, number of transactions with warnings) and descriptive in the form of a list of errors and warnings. The condition for correctly displaying the error list on the ZSMOPL Portal is signing the message with a valid certificate imported to ZSMOPL on the account of the reporting entity.

- by using a dedicated service - sending a status check message, the structure of which is described in chapter 5.1.4. Delivery planning message - it is used to check the status of verification of a previously sent trade and stock message, missing or planned delivery. The message is sent using the method <zapytajOStatusKomunikatu>. A detailed description of the implementation can be found in the chapters: 4. Webservice operation call and 8. Message status. The condition for a correct answer is to sign the message with a valid certificate imported to ZSMOPL on the account of the reporting entity.
- The MPD inventory in ZSMOPL can be checked by using a dedicated service - sending a status check message, the structure of which is described in chapter 5.1.5. Status check message - is used to check the current inventory status of a given reporting unit. The message is sent using the <zapytajOStanyMagazynowe> method. A detailed description of the implementation is in the chapters: 4. Webservice operation call and 9. Stock inquiry. The condition of correct answer is signing the message with a valid certificate imported into ZSMOPL on the reporting entity's account.

4. Webservice operation call

The ZSMOPL production environment is available at:

<https://zsmopl.ezdrowie.gov.pl>

Adres Webservice: <https://zsmopl.ezdrowie.gov.pl/cxf/zsmopl/ws/>

WSDL: <https://zsmopl.ezdrowie.gov.pl/cxf/zsmopl/ws/?wsdl>

XSD: <https://zsmopl.ezdrowie.gov.pl/cxf/zsmopl/ws/?xsd=../mt/mt.xsd>

The integration (evaluation) environment of ZSMOPL is available at:

<http://ewa-zsmopl.ezdrowie.gov.pl/>

Adres Webservice: <https://ewa-zsmopl.ezdrowie.gov.pl/cxf/zsmopl/ws/>

WSDL: <https://ewa-zsmopl.ezdrowie.gov.pl/cxf/zsmopl/ws/?wsdl>

XSD: <https://ewa-zsmopl.ezdrowie.gov.pl/cxf/zsmopl/ws/?xsd=../mt/mt.xsd>

According to the messaging model described in the “Messaging model” chapter above, the reporting entities should connect with ZSMOPL to send messages. A message contains the transaction datasets i.e. it consists in one or more transactions. Messages can be divided by types:

- Trade and stock message (**OS**) – it is used to collect data on wholesale and retail trade in monitored products. The message is sent using the `zapiszKomunikatOS` method. To this end, insert the XML element `<zapiszKomunikatOS>` in the body of the message to be sent. The message structure must comply with the scheme described in the “[Trade and stock message](#)” chapter. After the message is sent, we receive a reply in a form of a Soap document i.e. a header and content. The content includes `<zapiszKomunikatOSResponse>` containing an important element `<identyfikatorKomunikatu>` and sent message ID value in the ZSMOPL system. `<identyfikatorKomunikatu>` is of `IdentyfikatorKomunikatuMT` type, description of which is entered further in the “Message structure” chapter.
- Shortage report message (**ZB**) – it is used to collect data on shortages of medicinal products on the market. The message is sent using the `zapiszKomunikatZB` method. To this end, insert the XML element `<zapiszKomunikatZB>` in the body of the message to be sent. The message structure must comply with the scheme described in the “[Shortage report message](#)” chapter. After the message is sent, we receive a reply in a form of a Soap document i.e. a header and content. The content includes `<zapiszKomunikatZBResponse>` containing an important element `<identyfikatorKomunikatu>` and sent message ID value in the ZSMOPL system. `<identyfikatorKomunikatu>` is of `IdentyfikatorKomunikatuMT` type, description of which is entered further in the “Message structure” chapter.
- Delivery planning message (**PD**) – it is used to collect data on delivery schedule. The message is sent using the `zapiszKomunikatZB` method. To this end, insert the XML element `<zapiszKomunikatPD>` in the body of the message to be sent. The message structure must comply with the scheme described in the “[Delivery planning message](#)” chapter. After the message is sent, we receive a reply in a form of a Soap document i.e. a header and content. The content includes `<zapiszKomunikatPDResponse>` containing an important element

<identyfikatorKomunikatu> containing an important element <identyfikatorKomunikatu> and sent message ID value in the ZSMOPL system. <identyfikatorKomunikatu> is of IdentyfikatorKomunikatuMT type, description of which is entered further in the "Message structure" chapter.

- Status check message (getStatus) - it is used to check the status of verification of previously sent trade and stock message, reporting shortages or planning deliveries. The message is sent using the method `zapytajOStatusKomunikatu`. To do this, put an XML element `<zapytajOStatusKomunikatu>` in the body of the message being sent. The message structure must comply with the diagram described in the section "Status check message". After sending the message, we get a reply in the form of a Soap document, ie the headline with the content. The content contains `<statusOdpowiedz>` containing the elements: `<identyfikatorKomunikatu>`, `<statusKomunikatu>` and `<blad>`, whose elements are described in chapters 6.2, 6.3, 6.4 and 6.5.
- Check status message (getStan) - used to check the current stock level of a given reporting unit. The message is sent using the `< zapytajOStanyMagazynowe>` method. To do this, place the XML element `<zapytajOStanyMagazynowe>` in the body of the message being sent. The structure of the message must comply with the diagram described in the "Status check message" chapter. After sending the message, we get a reply in the form of a Soap document, i.e. the header with the content. The content includes `<stanyMagazynoweOdpowiedz>` containing the elements: `<statusZapytania>`, `<liczbaPozostalychZapytan>` and `<stan>` for each EAN code and serial number.

Please note that each message type has its individual structure.

Any sent document includes a parent marker `<soapenv:Envelope>` containing the `<soapenv:Header>` marker and the `<soapenv:Body>` marker required in the sent document.

`<soapenv:Header>` marker contains information on the envelope security measures (authentication, message summary). Find more in the „[Message header specification](#)” section.

Example <soapenv:Envelope> and <soapenv:Header>:

```
<soapenv:Header><wsse:Security xmlns:wsse="http://docs.oasis-open.org/wss/2004/01/
oasis-200401-wss-wssecurity-secext-1.0.xsd" xmlns:wsu="http://docs.oasis-open.org/wss/2004/01/
oasis-200401-wss-wssecurity-utility-1.0.xsd"><wsse:BinarySecurityToken EncodingType="http://
docs.oasis-open.org/wss/2004/01/oasis-200401-wss-soap-message-security-1.0#Base64Binary" ValueType="http://
docs.oasis-open.org/wss/2004/01/oasis-200401-wss-x509-token-profile-1.0#X509PKIPathv1" wsu:Id="
X509-925981AA89D6C41EB3144465584498121">MIIGQDCCA2owggJSoAMCAQICQCcUBuTAUz+owzANBqkqhkiG9w0BAQsFADBFMQswCQYDVQ
QGfEwJBVTEtMBEgA1UECAwKU29tZS1tdGF0ZTEhMB8GA1UECgwYSW50ZXJ1eXZlZ21kZ210cyBQdHkgTHRkMB4XDTE1MTAwMTE0MDMyNVoXDTE2
MDkzMDE0MDMyNVoRTElMAkGA1UEBhMCVUuEzARBgNVBAGMCI1NvbWUtU3RhdGUxITAFBgNVBAMGE1udGwVybWV0IFdpZGdpdHMgUHR5IEEx0ZD
CCASIdDQYJKoZIhvcNAQEBBQADgEPADCCAQoCggEBAN/7gzy818yt6pojNDG0kG3bMGSaLLAadFfsk9vXdeuLEFWPMjFR6nyWIOWi7tSdIuNz
DQ8MtMP0fx/zDZdgGvFzQTMkYkBeaxKEpq9fyZdjC41Y+QuWYvJif4xGym/MgwSF2GEoLYQXr+pbx72wKM81Yc/
mAyHPTy7Ev+4Djd6V7dUq2pt5GDxEM2wywcl8uXdShthGCFIDZgm69PweZoUJW8C/cJ90yGVwdoICRnt34SM/2POdL/H22TPtMAF1Pq3cuDiY
m+MSUfXFavG0eHxfajUvFDNXXS7ggX8mVbxH+76uI4YJzSbd1ff1fn0MayqRhLQghLbJUBGK5xzUcCAwEAAANdMFswHQYDVR0OBBYEFFPAX1e
7dMjLUU4MXr1xBHYG0XKDM8GA1UdIwQYMBAfPAPAX1e7dMjLUU4MXr1xBHYG0XKDMAwGA1UdEwQFMAMBAF8wCwYDVR0PBAQDAgEGMA0GCSqG
S5Ib3DQEBGwUAA4IBAQB8YuxNAjzjCoFaIptWtIIFZ8Wod0lJvLNXs6xvq1RtmJCST9fHw3tEoZR1HRaCXKsIgvhdv6FTahEfnNsgT24V/
HQ62u6Arm0QRxF50GXPtKy9Aj/eBnCb3tCfd4QcGQzuWxiMXQCTp7KnfC/aaIi2zJKN08RZw0GsVMJTOTUMUFhMvMgzjsCK9+M4yDGERkintYd
UbRkmyiw2jP80siyOPr5w+Dm4HNLHgrV7N+6oAUN3CQ9vao8HhJpuwxHRIW+dihPt46B/wFTGHeG/
quI4011mJl9w6TYZY53JK6xA+4eESnzFFkF6YVZsnPApeZuuVuB5k2B1M//IJ9AKMMIICzjCCAbYCCQCoP6U9NK/w+TANBqkqhkiG9w0BAQ
sFADBFMQswCQYDVQGEJwBVTETMBEgA1UECAwKU29tZS1tdGF0ZTEhMB8GA1UECgwYSW50ZXJ1eXZlZ21kZ210cyBQdHkgTHRkMB4XDTE1MTAw
MTE0MTMxM1oXDTE2MDkzMDE0MDMxM1owDTElMAkGA1UEAxCmCaHuwggEiMA0GCSqG5Ib3DQEBAAQAAIBDwAwggEkoAIBAQCChigJzwn7P1efo
bBcHV0hdNrcCTEeXk
Z5c3KUM934qAicKmbKquDqAsjIudNGz015qg36ehmjkGPr+jk0sXGKTveI2xTB+IHGCFEH+6Kxd9egYNE1CUT0UnuaVTarynjn4vG/ibMw/yMB
wifCjSjYnZnA1DhT01103WJwBA3QsLMAH15MXNMcScYDCNV+6eRD5EecQ3GwGTrTnpSNhyfM2+7M8eX0IuJtGrBlIbGGAC+I1npqW2Xm87840
gS26VmsKGoYqsbKXK3bqkBe2B69A3BjHl6VCTYAMx7t0t016jluUyJbduaiB9brh3Z118Lwh9UbZAC52jkJVT845FNAGMBAEwDQYJKoZIhvcNA
AQELBQADggEBAGvPYOKR8K56tKuyWkJXw3njMEioqFkLCVAAlyCL09kFMA5vpee8q4d41St4/
1E1mEz2UXl2VzGact8rEQl+I3MbKX8osRkicVfNfYvEL8+hsM9uupZ0/tFYh+jWYWE8s3Sy/
w5JY1Ea4PJe14ymXowr7XhBEZ30P6L1weasuvOVVsEqV5WcziRxCumY6h1M4aLWxHnBvJxFpdB3zK5yWiLsCYJ4yTDiYTXccPegQdpRmK3JiVvA
/TMSfVYVRIJH0tbn6S2R29EZHEHY2P6bEpZiREsYoboIif9sJgbrJUGQv8R7Lsmf/ZLbs+f1D45orB7unk9a/s5TmFvbnGTIA=</wsse:
BinarySecurityToken><ds:Signature Id="SIG-925981AA89D6C41EB3144465584498225" xmlns:ds="http://www.w3.org/2000/
09/xmldsig#"><ds:SignedInfo><ds:CanonicalizationMethod Algorithm="http://www.w3.org/2001/10/xml-exc-c14n#"><ec
:InclusiveNamespaces PrefixList="obs soapenv" xmlns:ec="http://www.w3.org/2001/10/xml-exc-c14n#"></ds:
CanonicalizationMethod><ds:SignatureMethod Algorithm="http://www.w3.org/2000/09/xmldsig#rsa-sha1"><ds:
Reference URI="#id-925981AA89D6C41EB3144465584498124"><ds:Transforms><ds:Transform Algorithm="http://
www.w3.org/2001/10/xml-exc-c14n#"><ec:InclusiveNamespaces PrefixList="obs" xmlns:ec="http://www.w3.org/2001/10/
xml-exc-c14n#"></ds:Transform></ds:Transform><ds:DigestMethod Algorithm="http://www.w3.org/2000/09/
xmldsig#sha1"><ds:DigestValue>eXyR08F9i3u8Q3bJvcW6e/es8=</ds:DigestValue></ds:Reference></ds:SignedInfo><ds
:SignatureValue> NS45ULI7S81aXmchf37F52y6va/4k4JjKzxi5xwGRsq7c1lEmmv/NaYCo7RXCg0aVQT67nrsCIO
PR2Bcn5Y0iYKQ1016U4bv69K5g24oZY4n+RDfEc7q1FLKNx15bndd2KvpfRbD5Tj9bz5KJv6DeDJ
bE2TaaS/9fW0LzPdIkZD+BEp/59NUN9DuYJG1j7tCyy1md7DxHsQLHJBApP7uUyL5In++Mc+hgMsk
e/q3e0vJ9IwHthDa0gQ0KfSXY+CL89/5Bxu4wdG7yvvSmzbxHotJ57ckXXl1e05dqrtb2UxfOvmQ
peSOjWbyve5Q77d95rodn3AUxn55t3qG7diRew==</ds:SignatureValue><ds:KeyInfo Id="
KI-925981AA89D6C41EB3144465584498122"><wsse:SecurityTokenReference wsse11:TokenType="http://
docs.oasis-open.org/wss/2004/01/oasis-200401-wss-x509-token-profile-1.0#X509PKIPathv1" wsu:Id="
STR-925981AA89D6C41EB3144465584498123" xmlns:wsse11="http://docs.oasis-open.org/wss/
oasis-wss-wssecurity-secext-1.1.xsd"><wsse:Reference URI="#X509-925981AA89D6C41EB3144465584498121" ValueType="
http://docs.oasis-open.org/wss/2004/01/oasis-200401-wss-x509-token-profile-1.0#X509PKIPathv1"/></wsse:
SecurityTokenReference></ds:KeyInfo></ds:Signature></wsse:Security></soapenv:Header>
```

Text version of the example:

```
<soapenv:Envelope xmlns:obs="http://cez.gov.pl/zsmopl/ws/obslugakomunikatow/"
xmlns:soapenv="http://schemas.xmlsoap.org/soap/envelope/">
  <soapenv:Header><wsse:Security xmlns:wsse="http://docs.oasis-open.org/wss/2004/01/oasis-200401-
wss-wssecurity-secext-1.0.xsd" xmlns:wsu="http://docs.oasis-open.org/wss/2004/01/oasis-200401-wss-
wsssecurity-utility-1.0.xsd"><wsse:BinarySecurityToken EncodingType="http://docs.oasis-
open.org/wss/2004/01/oasis-200401-wss-soap-message-security-1.0#Base64Binary"
ValueType="http://docs.oasis-open.org/wss/2004/01/oasis-200401-wss-x509-token-profile-
1.0#X509PKIPathv1" wsu:Id="X509-
4C22315792029A223F155248949147711">MIIEOzCCBM8wggK3oAMCAQICAgdGMA0GCSqGSIb3DQEBGwU
AMIGTMQswCQYDVQQGfEwJBVTEtMBEgA1UECAwLbWF6b3dpZWNraWUxETAPBgNVBACMFdhnN6YXdh
MQ4wDAYDVQQKDAVDU0IPWjENMASGA1UECwwEV1JTVDERMA8GA1UEAwwIQ1NJT1ogQ0ExKTAnBgkqhki
G9w0BCQEWGnAuZ29sZWJpZXZza2IAY3Npb3ouZ292LnBsMB4XDTE5MDMwNDE0MTUwMlloXDTE1xMDMy
```



```
MzE0MTUwMl9wZTELMaKGA1UEBhMCUEwxFDASBgNVBAgMC21hem93aWVja2lIMREwDwYDVQQLHDAhXY
XJzemF3YTE0MAwGA1UECgwFSXQvbmExDTALBgNVBAsMBFfSU1QxQjAMBgNVBAMMBUI3b25hMIIIBjANB
gkqhkiG9w0BAQEFAAOCAQ8AMIIBCgKCAQEAYZHP7QGDwz5Is+nxW2svWFFP1vxswmRRIcCnt8iP2TSwbg/d6
BpVdDRQKPtvsMpTupRNH5AqbtSc8wUHP9a1bN4xwPT20fPpHLZR0Jt9TsNxZFqbVH3+unD4s0zkk+VXRWYTV
vzkexGCqZS9T1TvkGYRdx00wjOLLhAiliAcDccWCohOcVlz4tKUnoI5oUwAf6tKLpBE8HQqn/TtzZSMtwp94ewq
mUSDHnV78JangYZcsrBRwGh5ImtYOWqJUQ6GpdMj5c6vwwQus1G1oR/Gs6MbLukQJduniybtb1jex9/OqnDzyB
dPUGuNVUVvSwDCA3W/zV6vniclo/4RLxYwQ/iQIDAQABo1owWDAdBgNVHQ4EFgQUxkDqWy2dDkqV5xaIE
MvW9eFGJGEwHwYDVR0jBBGwFoAUTs8M0KVR6RiLe9N/nuwN+I6TRuswCQYDVR0TBAlwADALBgNVHQ8EB
AMCBaAwDQYJKoZIhvcNAQELBQADggIBAAJ7G+v/3tTMijzkhJ2iFsAGmHdUcKeHSVUJ/5pzN+3WI6cmziRsbb
5a8TkMI8841+cj+Wujs50WQPC7a7S12oxAFewf6DPTT7sMo2bKEqLhLk0+n0YXm6F9LRbgtDFU3q4dEgS+Qlgu
VH/xYAosQzf/3LGF6kjeuR2CULtAqNYIA9s7OUctnC2D9kA5zte4HxHp51xpbTE5siwvxfVxmRfvxGW9hSiBSFToU
SoC6gYxkky4LcKpoK2Yfzx8ypVr2LQFLe+SdpOZQd9E/2GTedIDmqco+RrFb1o/nVLPpg0PDNym/zRpNPAQ18S
vulKQ0lz2JjygzLJwqBKL4c25B9AtbP1eHUWDWE8keHdwcO7lvjM5vCBHzn8Xj0PSy/pXtg9Ocx0wnPfcRSoTTO
aTxNVwiZbZNCiH+g8C1RAQlBa1EaXTVtC1NmhdZNqmOUtdDxMB6CiQel/KUvnmqPY4KCKmlx2wW56/k+IXaM
s65AvsWVKLi+7RLJylq7JybrYJUbzYcksdZtkXM2v0NG+VN3ZrBPea6es4o7cAix8m3CQioRimd6IDqlKRqs48tsqjJ
l4G7M05fb6gA7CK4iMoXVYefPH2fyCfjY9eBLluXfW/ISKOnUevdLWWMFtY+ATymisgrME1j7WmitTnJ7JDEdR
mCO0+0sWjtHMP2mYien</wsse:BinarySecurityToken><ds:Signature Id="SIG-
4C22315792029A223F155248949148215"
xmlns:ds="http://www.w3.org/2000/09/xmldsig#"><ds:SignedInfo><ds:CanonicalizationMethod
Algorithm="http://www.w3.org/2001/10/xml-exc-c14n#"><ec:InclusiveNamespaces PrefixList="obs
soapenv" xmlns:ec="http://www.w3.org/2001/10/xml-exc-
c14n#" /></ds:CanonicalizationMethod><ds:SignatureMethod
Algorithm="http://www.w3.org/2000/09/xmldsig#rsa-sha1" /><ds:Reference URI="#id-
4C22315792029A223F155248949147714"><ds:Transforms><ds:Transform
Algorithm="http://www.w3.org/2001/10/xml-exc-c14n#"><ec:InclusiveNamespaces PrefixList="obs"
xmlns:ec="http://www.w3.org/2001/10/xml-exc-
c14n#" /></ds:Transform></ds:Transforms><ds:DigestMethod
Algorithm="http://www.w3.org/2000/09/xmldsig#sha1" /><ds:DigestValue>p2pBhuNQ6WzRDHGqbdI+I8la
gbU=</ds:DigestValue></ds:Reference></ds:SignedInfo><ds:SignatureValue>liqey4DsjDyxcbdOiidnujgZ5qP
wrjGZSHmcJCYliDp7DmwJSwPybo1GnUT4a0y+HYAg9KmGJRWU
/dQtfjSdl2mvoNBUIMxI5YQd1NXR/bz8p908SsgAQKDja5RiWUxkt5vtl3JUJtfi/VgqRc40dmp
XgBBUzbAGu7ObE0FcLvrQfjuSm3RnkS3g52XCPovOd/TITlndx1LalnInhsSUsRHM+oiR14iSLC
OHOhhwLuuha1ZuE7XK+eFXsCLb7pYEsfl8xznwgb+2fqrQH5ohQxFBUtbyhXlRkZ1fP7gDe9KWlv
MdbW5WHA0peX5ISw96Am0U/51IUUn9mTqW2tw==</ds:SignatureValue><ds:KeyInfo Id="KI-
4C22315792029A223F155248949147712"><wsse:SecurityTokenReference
wsse11:TokenType="http://docs.oasis-open.org/wss/2004/01/oasis-200401-wss-x509-token-profile-
1.0#X509PKIPathv1" wsu:id="STR-4C22315792029A223F155248949147713"
xmlns:wsse11="http://docs.oasis-open.org/wss/oasis-wss-wssecurity-secext-1.1.xsd"><wsse:Reference
URI="#X509-4C22315792029A223F155248949147711" ValueType="http://docs.oasis-
open.org/wss/2004/01/oasis-200401-wss-x509-token-profile-
1.0#X509PKIPathv1" /></wsse:SecurityTokenReference></ds:KeyInfo></ds:Signature></wsse:Security></so
apenv:Header>
```

<soapenv:Body> marker is an actual content of the message i.e. transaction data sent by the reporting entities.

Examples and message structures are available at the webpage: [CeZ> Interoperacyjność> Interfejsy](#) section: [Zintegrowany System Monitorowania Obrotu Produktami Leczniczymi](#).

Example <soapenv:Body>:

```

<soapenv:Body wsu:Id="id-925981AA89D6C41EB3144465557434614" xmlns:wsu="http://
docs.oasis-open.org/wss/2004/01/oasis-200401-wss-wssecurity-utility-1.0.xsd">
  <obs:zapiszKomunikatZB>
    <komunikatZB>
      <idPodmiotuRaportujacego>
        <idBiznesowy>1234</idBiznesowy>
        <rodzajPodmiotuRaportujacego>AP</rodzajPodmiotuRaportujacego>
      </idPodmiotuRaportujacego>
      <idMPDPodmiotuRaportujacego>
        <idBiznesowy>1000165</idBiznesowy>
        <rodzajMPDPodmiotuRaportujacego>MPDAP</rodzajMPDPodmiotuRaportujacego>
      </idMPDPodmiotuRaportujacego>
      <komunikatTransakcja>
        <dataCzasTransakcji>2015-07-23T16:41:09.284136</dataCzasTransakcji>
        <lp>1</lp>
        <kodEAN>5909990840113</kodEAN>
        <liczbaBraku>5</liczbaBraku>
      </komunikatTransakcja>
      <komunikatTransakcja>
        <dataCzasTransakcji>2015-07-23T16:41:09.284136</dataCzasTransakcji>
        <lp>2</lp>
        <kodEAN>5909990907519</kodEAN>
        <liczbaBraku>2</liczbaBraku>
      </komunikatTransakcja>
      <komunikatTransakcja>
        <dataCzasTransakcji>2015-07-23T16:41:09.284136</dataCzasTransakcji>
        <lp>3</lp>
        <kodEAN>5909990335541</kodEAN>
        <liczbaBraku>2</liczbaBraku>
      </komunikatTransakcja>
    </komunikatZB>
  </obs:zapiszKomunikatZB>
</soapenv:Body>

```

Example text version:

```

<soapenv:Body wsu:Id="id-925981AA89D6C41EB3144465557434614" xmlns:wsu="http://docs.oasis-
open.org/wss/2004/01/oasis-200401-wss-wssecurity-utility-1.0.xsd">
  <obs:zapiszKomunikatZB>
    <komunikatZB>
      <idPodmiotuRaportujacego>
        <idBiznesowy>1234</idBiznesowy>
        <rodzajPodmiotuRaportujacego>AP</rodzajPodmiotuRaportujacego>
      </idPodmiotuRaportujacego>
      <idMPDPodmiotuRaportujacego>
        <idBiznesowy>1000165</idBiznesowy>
        <rodzajMPDPodmiotuRaportujacego>MPDAP</rodzajMPDPodmiotuRaportujacego>
      </idMPDPodmiotuRaportujacego>
      <komunikatTransakcja>
        <dataCzasTransakcji>2015-07-23T16:41:09.284136</dataCzasTransakcji>

```

```
<lp>1</lp>  
<kodEAN>5909990840113</kodEAN>  
<liczbaBraku>5</liczbaBraku>  
</komunikatTransakcja>  
<komunikatTransakcja>  
<dataCzasTransakcji>2015-07-23T16:41:09.284136</dataCzasTransakcji>  
<lp>2</lp>  
<kodEAN>5909990907519</kodEAN>  
<liczbaBraku>2</liczbaBraku>  
</komunikatTransakcja>  
<komunikatTransakcja>  
<dataCzasTransakcji>2015-07-23T16:41:09.284136</dataCzasTransakcji>  
<lp>3</lp>  
<kodEAN>5909990335541</kodEAN>  
<liczbaBraku>2</liczbaBraku>  
</komunikatTransakcja>  
</komunikatZB>  
</obs:zapiszKomunikatZB></soapenv:Body>
```



5. Message structure

Entries in the „Format / Type” column shall mean as follows:

| | |
|---------------------------------------------|------------------------------------------------------------------------------------------------------------------------------------------------------------------|
| Date | Date saved in the format: YYYY-MM-DD |
| Ddate + time | Date and time saved in the format: YYYY-MM-DDTHH:MM:SS:MS (where T is a character separating date and time). UTC+01:00 time zone is default in a 24-hour system. |
| Number, (m,n) | A number containing maximally m digits, including n digits in the fraction part separated with a dot. |
| To n characters | The value of an element should be an inscription containing between 1 and n characters, |
| Character string | Any character string (maximally to 255 characters). |
| IdentyfikatorMPDPodmiotuMT | Data type described in chapter 5.1 “Błąd! Nie można odnaleźć źródła odwołania.” |
| IdentyfikatorKomunikatuMT | Data type described in chapter 5.1 “Błąd! Nie można odnaleźć źródła odwołania.”. |
| IdentyfikatorPodmiotuRaportujacegoMT | Data type described in chapter 5.1 “Błąd! Nie można odnaleźć źródła odwołania.” chapter. |

Character coding in compliance with UTF-8.

5.1. Description of helper types/class

NOTE: detailed information about the data scheme, including field length, data type, maturity / multiplicity is in the current XSD.

| Type | Simple element | Multiplicity | Format | Description |
|----------------------------|--------------------------------|--------------|------------------|----------------------------------------------------------------------------------------------------------------------------------------------------------------------------------------------------------------------------------------------------------------------------------------------------------------------------------------------------------------|
| IdentyfikatorKomunikatuMT | | | | Message identifier. |
| | id | 1 | Number (18,0) | Message identifier. |
| IdentyfikatorMPDPodmiotuMT | | | | ID of the place of business of the reporting entity. |
| | idBiznesowy | 1 | Character string | Business ID of the place of business of the reporting entity – from the domain specified in the element rodzajMPDPodmiotuRaportujacego: if rodzajMPDPodmiotuRaportujacego == 'MPDHU', ID from the Register of Wholesales. if rodzajMPDPodmiotuRaportujacego == 'MPDAP', ID from the Register of Pharmacies. White characters are not accepted in this element. |
| | rodzajMPDPodmiotuRaportujacego | 1 | To 5 characters | Type of place of business of the reporting entity: MPDHU – pharmaceutical wholesale holding the ID in the Register of Pharmaceutical Wholesales. |

| Type | Simple element | Multiplicity | Format | Description |
|---------------------------------------|-------------------------------------------|--------------|------------------|-------------------------------------------------------------------------------------------------------------------------------------------------------------------------------------------------------------------------------------------------------------------------------------------------------------------------------------------------------------------------------------------------------------------------------------------------------------------------------------------------------------------------------------------------------------------------------------------------------------------------------------------------------------------------------------|
| | | | | MPDAP – pharmacy holding the ID in the Register of Pharmacies. |
| IdentyfikatorMPDPodmiotuDrugaStronaMT | | | | ID of the place of business of the reporting entity. |
| | idBiznesowy | 0-1 | Character string | Business ID of the place of business of the reporting entity – from the domain specified in the element rodzajMPDPodmiotuRaportujacegoDrugaStrona: if rodzajMPDPodmiotuRaportujacegoDrugaStrona == 'MPDHU', ID from the Register of Wholesales. if rodzajMPDPodmiotuRaportujacegoDrugaStrona == 'MPDAP' ID from the Register of Pharmacies. If rodzajMPDPodmiotuRaportujacegoDrugaStrona == 'MPDPL', ID of healthcare institution of the healthcare entity from the Register of Healthcare Entities – 14-digit REGON. Other entities (ie in the following types: PO, PR, FP, FZH, FZI, FZO, OF) - not applicable. White characters are not accepted in this element. |
| | rodzajMPDPodmiotuRaportujacegoDrugaStrona | 0-1 | To 5 characters | Type of place of business of the reporting entity: MPDHU – pharmaceutical wholesale holding the ID in the Register of Pharmaceutical Wholesales. MPDAP – pharmacy holding the ID in the Register of Pharmacies. MPDPL – healthcare institution of the healthcare entity holding the ID (14-digit REGON) in the Register of Healthcare Entities in the Healthcare Entities resources. |
| IdentyfikatorPodmiotuRaportujacegoMT | | | | ID of the reporting entity. |
| | idBiznesowy | 1 | Character string | Business ID of the place of business of the reporting entity – from the domain specified in the element rodzajPodmiotuRaportujacego: if rodzajPodmiotuRaportujacego == 'PO', tax identification number (NIP), VATIN or tax identification number in the state, in which the entity is registered, preceded by the symbol of the country compliant with 2-character ISO_3166-1 code entered at the stage of entity's registration. |

| Type | Simple element | Multiplicity | Format | Description |
|------|-----------------------------|--------------|-----------------|--------------------------------------------------------------------------------------------------------------------------------------------------------------------------------------------------------------------------------------------------------------------------------------------------------------------------------------------------------------------------------------------------------------------------------------------------------------------------------------------------------------------------------------------------------------------------------------------------------|
| | | | | <p>if rodzajPodmiotuRaportujacego from the {'PA', 'PF'} set and initially {PW}, ID is 12-digit number of the register book from the Register of Healthcare Entities.</p> <p>if rodzajPodmiotuRaportujacego from the {'HU', 'AP'} set, ID is (9-digit) REGON entered at the stage of entity's registration. In the case of applications for creating an account (rodzajWniosku=='KONTO') idBiznesowy is established when the application obtains the status=='ZAAKCEPTOWANY' (APPROVED) (for lower statuses idBiznesowy is not established). White characters are not accepted in this element.</p> |
| | rodzajPodmiotuRaportujacego | 1 | To 2 characters | Type of reporting entity. Values according to the glossary of types of entities reporting the trade in monitored products: PO, HU, AP, PA, PF, PW (Chapter 2. Glossary of terms) |

5.1.1. Trade and stock message

* note: in exceptional cases it is a complex type element, in such cases a description of the type can be found in chapter 5.1

| Hierarchy level | Complex Element | Simple Element | Multiplicity | Format / Type | Description |
|-----------------|-----------------|----------------------------|--------------|--------------------------------------|--------------------------------------------------------------------------------------------------------------------------------------------------------------------------------|
| 0 | komunikatOS | | | | Trade and stock message. |
| | | dataKomunikatu | 0-1 | Data | The marker declaring the date of the message is the declaration of the reporter, for which day the specific message is sent. |
| | | idPodmiotuRaportujacego | 1 | IdentyfikatorPodmiotuRaportujacegoMT | ID of the reporting entity. According to chapter 5.1 Description of helper types/class. |
| | | idMPDPodmiotuRaportujacego | 0-1 | IdentyfikatorMPDPodmiotuMT | ID of place of business of the reporting entity. It does not exist in the case of reporting entity == PO. According to chapter 5.1 Description of helper types/class. |
| | | idKomunikatPierwotny | 0-1 | IdentyfikatorKomunikatuMT | ID of the message to which the actual message refers. The element applies to the situation where the current message withdraws and replaces the previous message. According to |

| Hierarchy level | Complex Element | Simple Element | Multiplicity | Format / Type | Description |
|-----------------|---------------------|----------------------------|--------------|-------------------------------------------------|------------------------------------------------------------------------------------------------------------------------------------------------------------------------------------------------------------------------------------------------------------------------------------------------------------------------------------------------------------------------------------------------------------------|
| | | | | | chapter 5.1 Description of helper types/class. |
| 1 | komunikatTransakcja | | 1-n | Organized chronologically by dataCzasTransakcji | Trade and stock transaction. |
| | | lp | 1 | Number (7,0) | Ordinal number of transaction in the message. The maximum value of 2 million. The numbers must be unique. |
| | | dataCzasTransakcji | 1 | Date + time | Date and time of transaction – with accuracy to milliseconds (It is recommended that subsequent transactions in the message differ in the time of the transaction so that the time determines the order of transactions). The date cannot refer to the future. |
| | | rodzajTransakcji | 1 | To 3 characters | Type of trade and stock transaction. Values according to the dictionary of trade and stock transaction types (Chapter 2. Glossary of terms). |
| | | rodzajPodmDrugaStrona | 0-1 | To 3 characters | Type of entity, with which the transaction of trade in medicinal products is made. The Glossary of types of entities with which the transaction of trade in medicinal products is made (Chapter 2. Glossary of terms): Not applicable for transactions, in which entering the other party (table: Types of transactions in the trade and stock message in the „Glossary of terms” chapter 2) is not required. |
| | | idBiznesowyPodmDrugaStrona | 0-1 | Character string | ID of the entity, with which the transaction is made. The following values are expected: For the entities registered in Poland (i.e. of Polish HU, AP, PW, PR, FP type) – 9-digit REGON (National Official Register of Business Entities No.) or NIP (Tax Identification Number). For marketing authorisation holder (i.e. of PO type) – VAT ID (NIP) or VATIN. |

| Hierarchy level | Complex Element | Simple Element | Multiplicity | Format / Type | Description |
|-----------------|-----------------|----------------------|--------------|------------------|---------------------------------------------------------------------------------------------------------------------------------------------------------------------------------------------------------------------------------------------------------------------------------------------------------------------------------------------------------------------------------------------------------------------------------------------------------------------------------------------------------------------------------------------------------------------------------------------------------------|
| | | | | | For entities other than domestic undertaking (i.e. of FZH, FZO, FZI type), tax identification number in the state of its registration. In the case of lack of such number, any other ID (i.e. ID from the local files of the contractor in the IT system of the reporting entity). For natural person (i.e. of OF type) – not entered. White characters are not accepted in this element. |
| | | krajPodmDrugaStrona | 0-1 | To 2 characters | State of entity, with which the transaction is made – country code compliant with https://stat.gov.pl/badania-statystyczne/sprawozdawczosc/intrastat/alfabetyczny-wykaz-krajow/ . Required for foreign undertakings (rodzajPodmDrugaStrona: FZH, FZO, FZI). |
| | | nazwaPodmDrugaStrona | 0-1 | Character string | Name of entity, with which the transaction is made: . is not (does not need to be) entered for the entities running wholesales, pharmacies, healthcare entities (i.e. of HU, AP, PW type) – name of the entity will be acquired from a register in the ZSMOPL applicable for the type of entity at the message validation stage. must be entered in the case of marketing authorisation holder (PO), Polish entities other than entities carrying out medical activities, pharmacies, wholesalers, and for foreign enterprises (FZH, FZO, FZI). Not applicable to natural person (rodzajPodmDrugaStrona==OF). |
| | | adresPodmDrugaStrona | 0-1 | Character string | Address of entity, with which the transaction is made: is not (does not need to be) entered for the entities running wholesales, pharmacies, healthcare entities (i.e. of HU, AP, PW type) – address data of the entity will be acquired from a register in the ZSMOPL applicable for the type of entity at the message validation stage. must be entered in the case of marketing authorisation holder (PO), |

| Hierarchy level | Complex Element | Simple Element | Multiplicity | Format / Type | Description |
|-----------------|-----------------|--------------------------|--------------|---------------------------------------|-----------------------------------------------------------------------------------------------------------------------------------------------------------------------------------------------------------------------------------------------------------------------------------------------------------------------------------------------------------------------------------------------------------------------------------------------------------------------------------------------------------------------------------------------------------------------------------------------------------------------------------------------------------------------------------------------------------|
| | | | | | Polish entities other than entities carrying out medical activities, pharmacies, wholesalers, and for foreign enterprises (FZH, FZO, FZI). Not applicable to natural person (rodzajPodmDrugaStrona==OF). |
| | | idMPDPodmDrugaStrona | 0-1 | IdentyfikatorMPDPodmiotuDrugaStronaMT | ID of the place of business of the entity, with which the transaction is made. According to chapter 5.1 Description of helper types/class. |
| | | nrDokSprzZakRefDokMag | 0-n | Character string | Number of sales/purchase document relevant to the warehouse document – number required for documents of warehouse document types, only for the following (rodzajTransakcji): PKU, WPR. For PKU transaction, this should be the number of the external sales invoice – number of document assigned by the invoice issuer (from which the goods are purchased). For WPR document, this should be the number of own (in-house) sales invoice. Due to the relation between the warehouse receipt/release document and purchase/sales document of „one to one” type e.g. one warehouse receipt document can apply to several purchase documents, the element is a list of values (multiplicity: 0-n). |
| | | czyTransakcjaJestKorekta | 1 | Number (1,0) | Specifies, whether the document is a correction: 1 – document is a correction 0 – document is not a correction. |
| | | dataDokKorygowanego | 0-1 | Date + time | Date and time of corrected document – with accuracy to milliseconds – required only, when the transaction is a correction (if czyTransakcjaJestKorekta==1). The date cannot refer to the future. The date of the corrected document must be prior than the date of the correction document (given in the element <dataCzasTransakcji>). |
| | | nrDokKorygowanego | 0-1 | Character string | Number of corrected document – required only, when the transaction is |

| Hierarchy level | Complex Element | Simple Element | Multiplicity | Format / Type | Description |
|-----------------|--------------------------|-----------------------------------|--------------|------------------|----------------------------------------------------------------------------------------------------------------------------------------------------------------------------------------------------------------------------------------------------------------|
| | | | | | a correction (if czyTransakcjaJestKorekta==1). |
| | | przyczynaRoznicyInwentaryzacyjnej | 0-1 | Character string | Reason of stock difference – description field required, when the transaction is Stock difference i.e. rodzajTransakcji: IR+, IR-, INW. |
| | | rodzajDokZrodlsprz | 0-1 | To 2 characters | Element not required, maintained only for compatibility with the previous version of the system. |
| | | nrDokZrodln | 1 | Character string | Number of source transaction document – number of invoice or warehouse document, receipt, number of any other document assigned by the reporting entity. In the case of STN transactions, this field should be filled in with the value ND (not applicable) |
| | | nrDokZewnetrznego | 0-1 | Character string | Number of external document (number of document assigned by the issuer) – required for revenue transactions (ZKU). |
| | | nrERecepty | 0 | Character string | Element not required, maintained only for compatibility with the previous version of the system. |
| | | podstawaWydaniaLeku | 0-1 | To 2 characters | Dictionary Basics of drug release: RP – prescription, ZA – requisition, ZL – order, ND – not applicable. |
| 2 | komunikatTransakcjaOSPoz | | 1-n | Ordered by lp | Transactions and trade positions. Class of item of document being the trade and stock transaction. One object KomunikatTransakcja is correlated to – one or more items (corresponding to the items from the source transaction document). |
| | | lp | 1 | Number (8,0) | Ordinal number of the document item. It is recommended that document positions be ordered by the lp element.. The numbers must be unique. |

| Hierarchy level | Complex Element | Simple Element | Multiplicity | Format / Type | Description |
|-----------------|-----------------|-----------------------------|--------------|------------------|------------------------------------------------------------------------------------------------------------------------------------------------------------------------------------------------------------------------------------------------------------------------------------------------------------------------------------------------------------------------------------------------------------------------------------------------------------------------------------|
| | | nrPozycjiDokZrodl | 1 | Number (8,0) | Number of item according to the order from the source document, corresponding to the ordinal number of the item in the source document. Ordinal numbers are not supposed to be continuous, due to the fact that not all items in the source document need to be monitored. |
| | | czyProduktWydanyZRefundacja | 0 | Number (1,0) | Element not required, maintained only for compatibility with the previous version of the system. |
| | | czyDotImportuDocelInterw | 1 | Number (1,0) | Marker specifying, whether the transaction item applies to direct or intervention import: 0 – does not apply to direct or intervention import 1 – applies to to direct or intervention import. |
| | | numerZgodyPrezesa | 0-1 | Character string | The approval number of the President of the URPL - it is filled in for medicines that have been exempted from the obligation to include certain detailed information in Polish on the packaging and in the package leaflet. The number appears in the form of a character string according to a designated scheme: UR/Z/legal basis of the approval/sequential number/two-digit year - for example: UR/Z/4c/1/22. |
| | | kodEAN | 0-1 | Character string | Medicinal product code 14 characters (EAN, GTIN) or foreign GTIN <ul style="list-style-type: none"> Completed if the transaction concerns a product registered in RPL or a product with the Consent of the President of URPL Not completed if the transaction concerns target or intervention import During the message ingestion stage, all GTIN (EAN) codes are converted to 14-characters if they are shorter. This element does not accept whitespace. |
| | | nrZapotrzImportuDocelInterw | 0-1 | Character string | Number of requisition for drugs from direct or intervention import – filled in when the transaction applies to direct |

| Hierarchy level | Complex Element | Simple Element | Multiplicity | Format / Type | Description |
|-----------------|-----------------|-------------------|--------------|------------------|--------------------------------------------------------------------------------------------------------------------------------------------------------------------------------------------------------------------------------------------------------------------------------------------------------------------------------------------------------------------------------------------------------------------------------------------------------------------------------------------------------------------------------------------------------------------------------------------------------------------------------------------------------------------------------------------------------------------------------------------------------------------------------------------------------------------------------------|
| | | | | | <p>or intervention import (if <code>czyDotImportuDocelInterw==1</code>).</p> <p>Exemplary number formats are entered below:</p> <p>MZ/NNNNN/RR – for requisition</p> <p>D/NNNNN/RR – for dietary food</p> <p>DOP/NNNNN/RR – for consents issued in the Pharmaceutical Law Act, Article 4(8)</p> <p>Zgoda/NNNNN/RR – for decisions issued in the Pharmaceutical Law Act, Article 4(9) where NNNNN means 5-digit subsequent number and RR means two last digits of the year – for decisions issued to the end of the year 2020</p> <p>ZGODA/NNNNN/RR – for decisions issued in the Pharmaceutical Law Act, Article 4(9) where NNNNN means 5-digit subsequent number and RR means two last digits of the year - for decisions issued since the beginning of the year 2021</p> <p>White characters are not accepted in this element.</p> |
| | | seria | 0-1 | Character string | <p>Series of the medicinal product. Value required for all transactions except IR-, INW in case this transaction sets all 4 stock levels to 0:</p> <ul style="list-style-type: none"> • <code><stanlloscDostepnySeries></code> • <code><stanlloscWstrzWycofSeria></code> • <code><stanlloscAvailable></code> • <code><stanlloscWstrzWycof></code> <p>This means that if at least one of the above states is different from zero 0, the <code><series></code> element is required.</p> <p>Value also required for target and intervention imports.</p> |
| | | dataWaznosciSerii | 0-1 | Date | <p>Expiry date of the batch of the medicinal product.</p> <p>Value required for all transactions except INW, IR- or IR+ and STN, which is associated with INW, IR- or IR+</p> |

| Hierarchy level | Complex Element | Simple Element | Multiplicity | Format / Type | Description |
|-----------------|-----------------|-------------------|--------------|---------------|-------------------------------------------------------------------------------------------------------------------------------------------------------------------------------------------------------------------------------------------------------------------------------------------------------------------------------------------------------------------------------------------------------------------------------------------------------------------------------------------------|
| | | | | | <p>transactions, where the value in all of the following attributes:</p> <ul style="list-style-type: none"> <stanIloscDostepnySeries> <stanIloscWstrzWycofSeria> <stanIloscAvailable> <stanIloscWstrzWycof> <p>is equal to 0.</p> <p>The expiry date of the series cannot exceed a period of 10 years in relation to the transaction date for the series.</p> <p>Value also required for target and intervention imports.</p> |
| | | ilosc | 0-1 | Number (18,5) | <p>Quantity of medicinal product – should be entered, when the transaction is not a correction (czyTransakcjaJestKorekta==0). Expected value greater than 0, not applicable for IBO, IR+, IR-, INW, for which you can indicate 0. For STN transactions, this item is not required. Due to possible sales in the quantity being not an integer, e.g. sales of a single blister from packaging, the accuracy of numeric field was set for 5 decimal places.</p> |
| | | wartosc | 0-1 | Number (18,5) | <p>Net value of sold unit packages of a medicinal product – without consideration of discounts, rebates and allowances. It should be entered, when the transaction is not a correction (czyTransakcjaJestKorekta==0). Required for transactions == SPR. Expected value greater than or equal to 0. Value == 0 means donation.</p> |
| | | iloscPrzedKorekta | 0-1 | Number (18,5) | <p>Quantity of sold packages of medicinal product before correction – should be entered, when the transaction is a correction (czyTransakcjaJestKorekta==1). Expected value greater than or equal to 0.</p> |
| | | iloscPoKorekcie | 0-1 | Number (18,5) | <p>Quantity of medicinal product after correction – should be entered, when the transaction is a correction</p> |

| Hierarchy level | Complex Element | Simple Element | Multiplicity | Format / Type | Description |
|-----------------|-------------------------------|---------------------|--------------|------------------|----------------------------------------------------------------------------------------------------------------------------------------------------------------------------------------------------------------------------------------------------------------------------------------------------------------------------------------------------------------------------------------------------------------------------------------------------------------------------------------------------------------------------------------------------------------------------------------------------|
| | | | | | (czyTransakcjaJestKorekta==1). The expected value greater or equal to 0. |
| | | wartoscPrzedKorekta | 0-1 | Number (18,5) | Net value of medicinal product - without consideration of discounts, rebates and allowances. It should be entered, when the transaction is a correction (czyTransakcjaJestKorekta==1). Expected value greater than or equal to 0. Required for transactions == SPR.. |
| | | wartoscPoKorekcie | 0-1 | Number (18,5) | Net value of sold packages of medicinal product - without consideration of discounts, rebates and allowances. It should be entered, when the transaction is a correction (czyTransakcjaJestKorekta==1). Expected value greater than or equal to 0. Required for transactions == SPR. |
| | | przyczynaKorekty | 0-1 | Character string | Reason for correction – description field. Information required, when the transaction is a correction (czyTransakcjaJestKorekta==1). |
| 3 | komunikatTransakcjaOSPozZapMT | | 0-1 | | Positions of trade and stocks transactions for target and intervention imports. Summary of product characteristics for medicinal products from direct and intervention import – the object should exist, when the transaction item concerns direct or intervention import. i.e. komunikatTransakcjaOSPoz.czyDotImportuDocelInterw==1). Summary of product characteristics consists in the following fields: commercial code (EAN or equivalent), commercial name, international name, pharmaceutical form, dose, packaging size, name of marketing authorisation holder (MAH) , country of origin. |
| | | kodEAN | 1 | Character string | The foreign medicinal product code. EAN code or equivalent. Not verified. In the absence of a code, enter "none". |

| Hierarchy level | Complex Element | Simple Element | Multiplicity | Format / Type | Description |
|-----------------|--------------------------------|--------------------------|--------------|------------------|-------------------------------------------------------------------------------------------------------------------------------------------------------------------------------------------------------------------------------------------------------------------------------------------------------------------------------------------------------------------|
| | | | | | White characters are not accepted in this element. |
| | | nazwaHandlowa | 1 | Character string | Commercial name. |
| | | nazwaMiedzynarodowa | 1 | Character string | International name. |
| | | Postac | 1 | Character string | Form. |
| | | Dawka | 1 | Character string | Dose. |
| | | wielkoscOpakowania | 1 | Character string | Packaging size. |
| | | Producent | 1 | Character string | Name of marketing authorisation holder (MAH). |
| | | krajPochodzenia | 1 | Character string | Country of origin of medicinal product – country code compliant with https://stat.gov.pl/badania-statystyczne/sprawozdawczosc/intrastat/alfabetyczny-wykaz-krajow/ . |
| 4 | komunikatTransakcjaOSPOzStanMT | | 0-1 | | Revenue and stock transaction - information on stock. Stock information – the object should exist, if the transaction (komunikatTransakcja.rodzajTransakcji) is STN, oris in one of the following types: PKU, WPR, WZR, PZR, MWG, WWG, PWY, PM+, WM-, PZO, WUT, WUI, WRO, WRW, MWO, MDO, IBO, IR+, IR- and the STN transaction was not sent in the message. |
| | | stanIloscDostepnySeria | 1 | Number (18,5) | Quantity of medicinal product in stock in the warehouse of the place of business (after transaction) - stock available for trade for medicinal product batch. Authorised limit for HU and PO not more than 200 000. Authorised limit for AP not more than 10 000. |
| | | stanWartoscDostepnySeria | 0 | Number (18,5) | Element not required, maintained only for compatibility with the previous version of the system. |
| | | stanIloscWstrzWycofSeria | 1 | Number (18,5) | Quantity of medicinal product in stock in the warehouse of the place of business (after transaction) - stock suspended or recalled for trade for medicinal product batch. |

| Hierarchy level | Complex Element | Simple Element | Multiplicity | Format / Type | Description |
|-----------------|-----------------|----------------------------|--------------|---------------|---------------------------------------------------------------------------------------------------------------------------------------------------------------------------------------------|
| | | | | | Authorised limit for HU and PO not more than 200 000. Authorised limit for AP not more than 10 000. |
| | | stanWartoscWstrzWycofSeria | 0 | Number (18,5) | Element not required, maintained only for compatibility with the previous version of the system. |
| | | stanIloscDostepny | 1 | Number (18,5) | Quantity of medicinal product in stock in the warehouse of the place of business (after transaction) - stock available for trade for all batches of medicinal product in total. |
| | | stanWartoscDostepny | 0 | Number (18,5) | Element not required, maintained only for compatibility with the previous version of the system. |
| | | stanIloscWstrzWycof | 1 | Number (18,5) | Quantity of medicinal product in stock in the warehouse of the place of business (after transaction) - stock suspended or recalled for trade for all batches of medicinal product in total. |
| | | stanWartoscWstrzWycof | 0 | Number (18,5) | Element not required, maintained only for compatibility with the previous version of the system. |

5.1.2. Shortage report message

| Hierarchy level | Element | Attribute | Multiplicity | Format / Type | Description |
|-----------------|---------------------|----------------------------|--------------|--------------------------------------|-----------------------------------------------------------------------------------------------------------------------------------------------------------------------------------------------------------------------------------------------------|
| 0 | komunikatZB | | | | Shortage report message. |
| | | idPodmiotuRaportujacego | 1 | IdentyfikatorPodmiotuRaportujacegoMT | ID of the reporting entity. According to chapter 5.1 Description of helper types/class. |
| | | idMPDPodmiotuRaportujacego | 1 | IdentyfikatorMPDPodmiotuMT | ID of place of business of the reporting entity. According to chapter 5.1 Description of helper types/class. |
| | | idKomunikatPierwotny | 0-1 | IdentyfikatorKomunikatuMT | ID of the message to which the actual message refers. The element applies to the situation, in which the actual message is a corrected or a new version of the previously sent message. According to chapter 5.1 Description of helper types/class. |
| 1 | komunikatTransakcja | | 1-n | Ordered by dataCzasTransakcji | Transaction of report of shortage of medicinal product. |
| | | lp | 1 | Number (8,0) | Ordinal number of transaction in the message. The numbers must be unique. |
| | | dataCzasTransakcji | 1 | Date + time | Date and time of transaction (shortage reports) - with accuracy to milliseconds (subsequent transactions in the message should have different transaction time to make the time the indicator of transactions' order). |
| | | liczbaBraku | 1 | Number (8,0) | Number of packaging of medicinal product reported as missing (of shortage). |
| | | przyczynaBraku | 0-1 | Character string | Cause of the product lack. |
| | | kodEAN | 1 | Character string | EAN code of medicinal product. White characters are not accepted in this element. |

5.1.3. Delivery planning message

* note: in exceptional cases it is a complex type element, in such cases a description of the type can be found in chapter 5.1

| Hierarchy level | Complex Element | Simple Element | Multiplicity | Format / Type | Description |
|-----------------|---------------------|-------------------------|--------------|--------------------------------------|---------------------------------------------------------------------------------------------------------------------------------------------------------------------------------------------------------------------------------------------------------|
| 0 | komunikatPD | | | | Delivery planning message. |
| | | idPodmiotuRaportujacego | 1 | IdentyfikatorPodmiotuRaportujacegoMT | ID of the reporting entity. |
| | | idKomunikatPierwotny | 0-1 | IdentyfikatorKomunikatuMT | ID of the message to which the actual message refers. The element applies to the situation, in which the actual message is a corrected or a new version of the previously sent message. |
| 1 | komunikatTransakcja | | 1-n | Ordered by dataCzasTransakcji | Transaction of planning the deliveries of medicinal product. |
| | | lp | 1 | Number (8,0) | Ordinal number of transaction in the message. The numbers must be unique. |
| | | dataCzasTransakcji | 1 | Date + time | Date and time of transaction (plan reporting) - with accuracy to milliseconds (subsequent transactions in the message should have different transaction time to make the time the indicator of transactions' order). |
| | | kodEAN | 1 | Character string | EAN code of medicinal product to which the delivery planning transaction applies. White characters are not accepted in this element. |
| | | rodzajTransakcji | 1 | To 2 characters | Type of delivery planning transaction:: PL – delivery plan, WS – suspension of deliveries, WZ – resumption of deliveries, ZA – end of deliveries. Reporting WS, WZ and ZA transactions is currently not required and should not be sent. |
| | | dataPoczatkowa | 1 | Date | Starting date of the period to which the planning process applies. |

| Hierarchy level | Complex Element | Simple Element | Multiplicity | Format / Type | Description |
|-----------------|---------------------------|-----------------------|--------------|------------------------|-----------------------------------------------------------------------------------------------------------------------------------------------------------------------------------------------------------------------------------------------------------------------------------------------------------------------------------------------------------------------------------------------------------------------------------------------------------------------------------------------------------------------|
| | | | | | At the message validation stage, it is checked whether the condition of entering of the future date in relation to the date of reporting the plan (later or equal to the Data(dataCzasTransakcji)) is met. It is recommended that the date: dataPoczątkowa is the next day after the date: dataCzasTransakcji. When the transaction type is the "delivery plan" (rodzajTransakcji==PL) the date specifies the beginning of the period, to which the detailed plan entered in the komunikatTransakcjaPDPlan refers. |
| | | dataKoncowa | 0-1 | Date | End date – end date of the period, to which the planning process applies: When the transaction type is the "delivery plan" (rodzajTransakcji==PL), the date is required. Delivery plans are required for periods of at least 1 month. |
| | | uzasadnWstrzymZakoncz | 0-1 | Character string | Element not required, maintained only for compatibility with the previous version of the system. |
| 2 | komunikatTransakcjaPDPlan | | 0-1 | Ordered by year, month | The medicinal products planning delivery transaction - detailed data Contains detailed data of delivery plan in the delivery planning message. Applies to the transactions, for which komunikatTransakcja.rodzajTransakcji==PL (delivery plan). Objects ordered by criterion {year, week}. |
| | | wielkosc | 1 | Number (8,0) | Delivery volume – planned number of unit packaging of medicinal product in delivery. |
| | | rok | 1 | Number (4,0) | Year of planned delivery. Entered year should fall within the period specified by the starting and end date (komunikatTransakcja.dataPoczątkowa and dataKoncowa). |
| | | miesiac | 1 | Number (2,0) | Number of month in the year of planned delivery. The month number is a two-digit number of the month from 01 to 12, with the leading . (komunikatTransakcja.dataPoczątkowa and dataKoncowa). |

| Hierarchy level | Complex Element | Simple Element | Multiplicity | Format / Type | Description |
|-----------------|-----------------------------------------|----------------------|--------------|-----------------------------------------|-------------------------------------------------------------------------------------------------------------------------------------------------------------------------------------------------------------------------------------------------------------------------------------------------|
| | | miejsceDostawy | 1 | komunikatTransakcjaPDPlanMiejsceDostawy | Place of planned delivery |
| 3 | komunikatTransakcjaPDPlanMiejsceDostawy | | | | Place of planned delivery in Planned delivery |
| | | rodzajMiejscaDostawy | 1 | 2 znaki | Type of planned delivery. Acceptable values: <ul style="list-style-type: none"> • HU • AP • PL |
| | | idMiejscaDostawy | 1 | Ciąg znaków | <ul style="list-style-type: none"> • 'MPDHU' = ID from the Register of Wholesales. • 'MPDAP' = ID from the Register of Pharmacies. • 'MPDPL' = ID of healthcare institution of the healthcare entity from the Register of Healthcare Entities – 9-digit REGON. |

5.1.4. Status check message

* note: in exceptional cases it is a complex type element, in such cases a description of the type can be found in chapter 5.1

| Level in Hierarchy | Complex Element | Simple Element | Multiplicity | Format/Type | Description |
|--------------------|-----------------|-------------------------|--------------|---------------|-------------------------------------------------------------------------------------------------------------------------------|
| 0 | Message | | | | Status Check Message |
| | | identyfikatorKomuniaktu | 1 | Number (18,0) | System-generated Message ID when one of the messages is sent: Trades and stocks Deficiency reports Delivery planning |

```
<soapenv:Envelope xmlns:soapenv="http://schemas.xmlsoap.org/soap/envelope/"
xmlns:stat="http://csioz.gov.pl/zsmopl/ws/statuskomunikatudmz/">
  <soapenv:Header/>
  <soapenv:Body>
    <stat:zapytajOStatusKomunikatu>
      <komunikat>
        <identyfikatorKomunikatu?></identyfikatorKomunikatu>
      </komunikat>
    </stat:zapytajOStatusKomunikatu>
  </soapenv:Body>
</soapenv:Envelope>
```

5.1.5. State check message

* note: in exceptional cases it is a complex type element, in such cases a description of the type can be found in chapter 5.1

| Level in Hierarchy | Complex Element | Simple Element | Multiplicity | Format/Type | Description |
|--------------------|-----------------|----------------------------|--------------|--------------------------------------|----------------------------------------------------------------------------------------------------------------------------------------------------------|
| 0 | Komunikat | | | | State Check Message |
| | | idPodmiotuRaportujacego | 1 | IdentyfikatorPodmiotuRaportujacegoMT | Reporting entity identifier. According to the chapter 5.1 Description of helper types/class. |
| | | idMPDPodmiotuRaportujacego | 0-1 | IdentyfikatorMPDPodmiotumT | Reporting entity business location identifier. Does not exist for reporting agent == PO. According to the chapter 5.1 Description of helper types/class. |

```
<soapenv:Envelope xmlns:soapenv="http://schemas.xmlsoap.org/soap/envelope/"
xmlns:stan="http://cez.gov.pl/zsmopl/ws/stanydmz/">
  <soapenv:Header/>
  <soapenv:Body>
    <stan:zapytajOStanyMagazynowe>
      <komunikat>
        <idPodmiotuRaportujacego>
          <idBiznesowy?</idBiznesowy>
          <rodzajPodmiotuRaportujacego?</rodzajPodmiotuRaportujacego>
        </idPodmiotuRaportujacego>
        <!--Optional:-->
        <idMPDPodmiotuRaportujacego>
          <idBiznesowy?</idBiznesowy>
          <rodzajMPDPodmiotuRaportujacego?</rodzajMPDPodmiotuRaportujacego>
        </idMPDPodmiotuRaportujacego>
      </komunikat>
    </stan:zapytajOStanyMagazynowe>
  </soapenv:Body>
</soapenv:Envelope>
```



6. Message validation rules

The “Messaging model” chapter presents the messaging model, whereas clause 3 of this chapter contains a conceptual description of the method of message validation. The general scheme is universal for all types of messages. There are however certain differences resulting from the structure of individual messages. The table below presents detailed validation schemes for the individual types of messages.

Trade and stock message (OS)

| Validation order | | Rule domain code |
|------------------|-------------------------------------------------------|------------------|
| 1 | Message header validation OS | KM |
| 2 | Verification of transaction data OS | TROS |
| 3 | Verification of position data within a transaction OS | TROSPOZ |

Shortage report message (ZB)

| Validation order | | Rule domain code |
|------------------|-------------------------------------|------------------|
| 1 | Message header validation ZB | KM |
| 2 | Verification of transaction data ZB | TRZB |

Delivery planning message (PD)

| Validation order | | Rule domain code |
|------------------|-------------------------------------------------------|------------------|
| 1 | Message header validation PD | KM |
| 2 | Verification of transaction data PD | TRPD |
| 3 | Verification of position data within a transaction PD | TRPDPLAN |

6.1. Message validation for compliance with template

During validation the message is checked for compliance with the scheme (XML Schema). If any non-compliance is identified, a reply with code 500 containing information on non-compliance with scheme is sent the IT system of the reporting entity. Such message is rejected in full and not recorded in the ZSMOPL (and therefore unavailable on website).

Exemplary errors causing reply with error 500 by the Web Service and discontinuation of further validation:

- Invalid symbol of transaction type.
- Invalid specification of the type of entity, with which the transaction is made.
- No date and time of transaction.
- Value of element, which should specify, whether the transaction is a correction, is not an integer.
- Value of marker, which specifies, whether the medicinal product was dispensed with reimbursement, is not an integer.
- Value of marker, which specifies, whether the transaction item concerns direct or intervention import, is not an integer.
- Invalid specification of the type of source document of sales transaction.
- Invalid specification of the basis for drug dispensing.
- Invalid type of delivery planning transaction.
- Incomplete number of product shortage.
- Negative values / quantities are given.
- White marks have been given.

Exemplary Web Service replies to such errors:

- `<faultstring>Unmarshalling Error: cvc-enumeration-valid: Value 'AAA' is not facet-valid with respect to enumeration '[ZKU, SPR, PKU, WPR, WZR, PZR, MWG, WWG, PWY, PM+, WM-, PZO, WUT, WUI, WRO, WRW, MWO, MDO, IBO, IR+, IR-]'. It must be a value from the enumeration.</faultstring>`
- `<faultstring>Unmarshalling Error: cvc-enumeration-valid: Value 'AAA' is not facet-valid with respect to enumeration '[PO, HU, AP, PA, PF, PW]'. It must be a value from the enumeration. .</faultstring>`
- `<faultstring>Unmarshalling Error: Not a number: A</faultstring>`
- `<faultstring>Unmarshalling Error: cvc-datatype-valid.1.2.1: '2018-02-26' is not a valid value for 'dateTime'.</faultstring>`

If at this stage validation is negative, it is recommended to check the message to be sent for compliance with the scheme.

If validation is positive (validation for compliance with XML Schema), the message has the assigned ID and is saved in ZSMOPL (awaiting validation described in chapter 3, clause 3).

6.2. Message header validation

| Rule domain code | Verification status | Description of error or warning |
|------------------|---------------------|---------------------------------------------------------------------------------------------------------------------------------------------------------------------------------------------------------------------------------------------------------|
| KM1 | Error | The message was signed with a certificate not registered in ZSMOPL. Please log in to the ZSMOPL Portal and check whether your certificate has expired or if it is the same certificate that you have imported into the ZSMOPL report dispatch software. |
| KM2 | Error | There was a mismatch between the elements: reporting entity identifier, type of reporting entity, identifier of the reporting entity's place of business, type of reporting entity's place of business. |
| KM3 | Error | The original message with the identifier indicated was not found or belongs to another reporting entity. |
| KM4 | Error | Message is a duplicate. |
| KM5 | Error | The message sent contains duplicates in the transaction numbering. |
| KM6 | Error | Future date of the message. |
| KM7 | Error | The deadline of 7 days for correcting the message has been exceeded. |
| KM8 | Warning | The original message has incorrect status or withdrawn. |

» Message validation rules

| Rule domain code | Verification status | Description of error or warning |
|------------------|---------------------|-----------------------------------------------------------------------------------------|
| KM9 | Error | The STN transaction must be the last transaction in the message and can only occur once |



6.3. Validation of transactions in the trade and stock message

| Rule domain code | Verification status | Description of error or warning | Message element / Other comments |
|------------------|---------------------|------------------------------------------------------------------------------------------------------------------|-------------------------------------------------------------------------------------------------------------------------------------------------------------------------------------------------------------------------------------------------------------------------------------------------------|
| TROS2 | Warning | The given REGON of the medicinal entity was not found in the register of entities performing medicinal activity. | <idBiznesowyPodmDrugaStrona> |
| TROS4 | Error | The given REGON number has an incorrect construction. | In the case of the reporting entity AP, HU - REGON 9 digits (leading zero note) in the <idPodmiotuRaportujacego> In the case of an entity with which the transaction is concluded and registered in Poland (ie HU, AP, PW, PR, FP) - REGON 9 digit in the element <idBiznesowyPodmDrugaStrona> |
| TROS6 | Error | The tax identification number of the entity with which the transaction is concluded is not provided. | <idBiznesowyPodmDrugaStrona> in case of: Responsible entity (ie in the type of OP) - NIP Entities other than a domestic entrepreneur (ie in the type of FZH, FZO, FZI) tax identification number in the country in which the entity is registered |
| TROS7 | Error | Invalid or missing code of state of a foreign company. | <krajPodmDrugaStron> in case of FZH, FZO, FZI. |
| TROS9 | Error | The name of the entity with whom the transaction is concluded is not provided. | <nazwaPodmDrugaStrona> It does not apply to contractors of the AP, HU, PW type |
| TROS11 | Error | Entity's address has not been provided, with whom the transaction is concluded. | <adresPodmDrugaStrona> It does not apply to contractors of the AP, HU, PW type |
| TROS12 | Error | The given pharmacy ID with which the transaction is concluded was not found in the Pharmacy Registry. | <idMPDPodmDrugaStrona> when the type of MPD is MPDAP |

| Rule domain code | Verification status | Description of error or warning | Message element / Other comments |
|------------------|---------------------|----------------------------------------------------------------------------------------------------------------------------------------------------------------------------------|-------------------------------------------------------------------------|
| TROS13 | Error | Entered ID of the place of business of the entity, with which the transaction is made, is not found in the Register of Pharmaceutical Wholesales. | <idMPDPodmDrugaStrona> when the type of MPD is MPDHU |
| TROS14 | Warning | The given REGON (14 characters) of the medical institution with which the transaction is concluded has not been found in the Register of Entities Performing Medicinal Activity. | <idMPDPodmDrugaStrona> when the type of MPD is MPDPL |
| TROS17 | Error | No purchase document number corresponding to the warehouse receipt document is entered. | <nrDokSprzZakRefDokMag> |
| TROS18 | Error | No sales document number corresponding to the warehouse release document is entered. | <nrDokSprzZakRefDokMag> |
| TROS19 | Error | Invalid value of element that should specify, whether the transaction is a correction. | <czyTransakcjaJestKorekta> |
| TROS20 | Error | No date of corrected transaction. | <dataDokKorygowanego> |
| TROS21 | Error | No number of corrected document. | <nrDokKorygowanego> |
| TROS22 | Error | No reason of inventory difference specified. | <przyczynaRoznicyInwentaryzacyjnej> |
| TROS26 | Error | No number of external document (number of document assigned by the issuer). | <nrDokZewnetrznego> if category purchase |
| TROS29 | Error | Invalid specification of the basis for drug dispensing for the entered type of transaction and type of entity, with which the transaction is made. | <podstawaWydaniaLek> |
| TROS45 | Error | The type of business location of the entity with which the transaction is concluded is not given. | <rodzajMPDPodmiotuRaportujacego DrugaStrona> in case of AP, HU or PW |
| TROS46 | Error | No information was provided about the type of entity with which the transaction is concluded. | <rodzajPodmDrugaStrona> |



| Rule domain code | Verification status | Description of error or warning | Message element / Other comments |
|------------------|---------------------|-----------------------------------------------------------------------------------------------------------------------------------------------------------|---------------------------------------------------------------------------------------------------------|
| TROS47 | Error | The business location identifier of the entity with which the transaction is concluded is not provided. | <idMPDPodmDrugaStrona> |
| TROS48 | Error | The given transaction date refers to the future. | <dataCzasTransakcji> |
| TROS49 | Error | The correction date must be later than the corrected transaction date. | <dataDokKorygowanego> |
| TROS50 | Error | The transaction date does not match the message date. | <dataCzasTransakcji>; <dataKomunikatu> |
| TROS51 | Error | The adjusted transaction date cannot be a future date. | <dataDokKorygowanego> |
| TROS52 | Error | The transaction date refers to the period before reporting to ZSMOPL. | <dataCzasTransakcji> is earlier than 01/04/2019 |
| TROS53 | Error | The message sent contains duplicates in item numbering. | <lp> in <komunikatTransakcjaOSPoz> |
| TROS54 | Error | The given NIP (tax identification number) has an incorrect construction. | <idBiznesowyPodmDrugaStrona> in case of PO |
| TROS55 | Warning | The reporting person and the contractor are the same entity. | <idBiznesowyPodmDrugaStrona> <idBiznesowyRaportujacego> |
| TROS56 | Warning | The pharmacy indicated in the transaction as the counterparty currently does not have the status 'active' in the Register of Pharmacies | <rodzajPodmDrugaStrona> = AP <idBiznesowyPodmDrugaStrona> Status other than 'active' or 'waiting' |
| TROS57 | Warning | The wholesaler indicated in the transaction as the counterparty currently does not have the status 'active' in the Register of Pharmaceutical Wholesalers | <rodzajPodmDrugaStrona> = HU <idBiznesowyPodmDrugaStrona> Status other than 'active' or 'waiting' |



| Rule domain code | Verification status | Description of error or warning | Message element / Other comments |
|------------------|---------------------|---------------------------------------------------------------------------------------------------------------------------------------------------------------------------------------------------|-----------------------------------------------------------------------------------------------------------------------------------------------------------------------------------------------|
| TROS58 | Warning | The batch release can only be reported by the MAH. | <rodzajPodmiotuRaportujacego> other than PO |
| TROS59 | Warning | The source document number was not specified. | <NrDokZrodl> This rule will be called for any non-STN transaction. The rule will check if the nrDokZrodl field is defined for the transaction and if it is not empty |
| TROS60 | Warning | The healthcare facility indicated in the transaction as the entity of the other party currently in the Register of Entities Performing Medicinal Activities does not have the status of "Active". | <idBiznesowy> <idMPDPodmDrugaStrona> |
| TROS61 | Error | Personal data is provided in the data of the other party. | <nazwaPodmDrugaStrona> |
| TROS62 | Warning | Invalid transaction type. To report inventory, use the INW – inventory transaction. | <rodzajTransakcji> IR+ or IR- |
| TROSP0Z32 | Warning | The EAN code provided was not found in the monitored products registry. | <kodEAN> in <komunikatTransakcjaOSPoz> |
| TROSP0Z34 | Error | Entered number of requisition for drugs from direct or intervention import is not found in the register of requisitions. | <nrZapotrzImportuDocellInterw> |
| TROSP0Z36 | Error | One or more information fields consisting in summary of product characteristics for medicinal product from direct or intervention import is empty. | <komunikatTransakcjaOSPozZapMT> including: <kodEAN> <nazwaHandlowa> <nazwaMiedzynarodowa> <postac> <dawka> <>wielkoscOpakowania> <producent> <krajPochodzenia> |

| Rule domain code | Verification status | Description of error or warning | Message element / Other comments |
|------------------|---------------------|---------------------------------------------------------------------------------------------------------------------------|---------------------------------------------------------------------------------------------------------------------------------------------------------------------------------------------------------------------------------------------------------------------------------------------------------------------------------------------------------------------------------------------------------------------------------------------------|
| TROSP0Z37 | Error | An incorrect amount of product has been entered. | <ilosc> |
| TROSP0Z38 | Error | An incorrect net value of the product that is required for the sale is provided. | <wartosc> |
| TROSP0Z39 | Error | An incorrect amount of product was given before correction, which is required in case of correction. | <iloscPrzedKorekta> |
| TROSP0Z40 | Error | An incorrect amount of product has been provided after correction, which is required in case of correction. | <iloscPoKorekcie> |
| TROSP0Z41 | Error | An incorrect net value of the product was given before the correction, which is required in the case of sales adjustment. | <wartoscPrzedKorekta> |
| TROSP0Z42 | Error | An incorrect net value of the product has been given after correction, which is required in the case of sales adjustment. | <wartoscPoKorekcie> |
| TROSP0Z43 | Error | No reason for correction required, when the transaction is a correction, is entered. | <przyczynaKorekty> |
| TROSP0Z44 | Error | No inventory information was provided that is required for the type of transaction provided. | <p><komunikatTransakcjaOSPozStanMT> including:</p> <p><stanIloscDostepnySeria></p> <p><stanIloscWstrzWycofSeria></p> <p><stanIloscDostepny></p> <p><stanIloscWstrzWycof></p> <p>The error is not reported for transactions that require states if there is an STN transaction in the message.</p> <p>The error is reported if there is an STN transaction in the message and the states are not included in it.</p> |
| TROSP0Z70 | Error | The provided EAN code is incorrect. | <kodEAN> in <komunikatTransakcjaOSPoz> |

| Rule domain code | Verification status | Description of error or warning | Message element / Other comments |
|------------------|---------------------|---------------------------------------------------------------------------------------------------------------------------------------------------------------------------------------------------------------------------------------------------------------------------------------------------------|------------------------------------------------------------------------------------------------------------------------------------------------------------------------------------------------------------------------------------------------------------------------------------------------------------------------------------------------------------------------------------------------------------------------------------------------------------------------------------------------------------------------------------------------------------------------------------------|
| TROSP0Z71 | Error | No batch number is given. | <p><seria></p> <p>< seria > not required for INW and IR – transactions, where the value in all the following attributes:</p> <ul style="list-style-type: none"> • <stanIloscDostepnySeries> • <stanIloscWstrzWycofSeria> • <stanIloscAvailable> • <stanIloscWstrzWycof> <p>is equal to 0</p> |
| TROSP0Z75 | Error | No batch expiry date has been provided. | <p><dataWaznosciSerii></p> <p><rodzajTransakcji></p> <p><stanIloscDostepnySeries></p> <p><stanIloscWstrzWycofSeria></p> <p><stanIloscAvailable></p> <p><stanIloscWstrzWycof></p> <p>< dataWaznosciSerii > not required for INW, IR –, IR+ transactions, where the value in all the following attributes:</p> <ul style="list-style-type: none"> • <stanIloscDostepnySeries> • <stanIloscWstrzWycofSeria> • <stanIloscAvailable> • <stanIloscWstrzWycof> <p>is equal to 0</p> |
| TROSP0Z76 | Error | The available state of the series must not be greater than the available state of the product. | <stanIloscDostepnySeria> is greater than<stanIloscDostepny> |
| TROSP0Z77 | Error | Series paused state can not be greater than the state of paused product. | <stanIloscWstrzWycofSeria> is greater than <stanIloscWstrzWycof> |
| TROSP0Z78 | Error | Invalid batch expiration date provided. Please check if the entered batch expiration date is correct. Report the product disposal using the WUT transaction (Disposal due to expiration). An expired product can be returned to the supplier and reported accordingly with the WZR (Return to Supplier) | <p><dataWaznosciSerii></p> <p><rodzajTransakcji></p> <p><stanIloscDostepnySeries></p> <p><stanIloscWstrzWycofSeria></p> <p>The rule will occur when</p> <ul style="list-style-type: none"> • the validity date of the <dataWaznosciSerii> series is before the transaction date <dataczasTransakcji> or |

| Rule domain code | Verification status | Description of error or warning | Message element / Other comments |
|------------------|---------------------|---------------------------------------------------------------------------------------------------------------------------------------------------------------|------------------------------------------------------------------------------------------------------------------------------------------------------------------------------------------------------------------------------------------------------------------------------------------------------------------------------------------------------------------------------------------------------------------------------------------------------------------------------------------------------------------------------------------------------------------------------------------------------------------------------------------------------------------------------------------------------------------|
| | | and PZR (Receipt of Return from Customer) transactions. Incorrect statuses for expired batches can be corrected to zero with the INW transaction (Inventory). | <ul style="list-style-type: none"> in the case of a correction document before the date of the correction document <dataDokKorygowany> for a product or exceeds 10 years from the transaction date for the series. <p>The rule will not apply to transactions WUT, WZR, PZR, PRO, MWO, and INW.</p> <p>For the INW transaction, an additional condition is defined that restricts the possibility of reporting statuses for the following attributes:</p> <p><stanIloscDostepnySeria></p> <p><stanIloscWstrzWycofSeria></p> <p>with statuses greater than zero. (The INW transaction can only be used to zero out the status for a product with an expired batch.)</p> |
| TROSP0Z79 | Warning | The number of demand is older than 2 years. | <nrZapotrzImportuDocellInterw> |
| TROSP0Z80 | Warning | The state of the product series exceeding the permitted limit is given. | <p><stanIloscDostepnySeria></p> <p><stanIloscWstrzWycofSeria></p> <p>Authorised limit for HU and PO not more than 200 000.</p> <p>Authorised limit for AP not more than 10 000.</p> |
| TROSP0Z81 | Warning | The expiry date of the authorization is more than 3 years. | Based on the data contained in the Register of Medicinal Products. |
| TROSP0Z82 | Warning | The GTIN code given belongs to the veterinary not reporting to the ZSMOPL. | Based on the data contained in the Register of Medicinal Products. |
| TROSP0Z83 | Error | Information on stock levels in the STN transaction was not provided | In the STN transaction, no transaction items were specified for <seria> in previous transactions. The content of the error message indicates the transaction, position, GTIN code and series that were indicated in |



| Rule domain code | Verification status | Description of error or warning | Message element / Other comments |
|------------------|---------------------|----------------------------------------------------------------------------------------------------------------------------------------------------------------------------------------------------------------------------------------------------------------------------------------------------------------------------------------------------------------------------------------------------------------------|-----------------------------------------------------------------------------------------------------------------------------------------------|
| | | | the message and were not indicated in the STN |
| TROSP0Z84 | Warning | The transaction item contains information about the stock levels, which was not required when using the STN transaction | If there is an STN transaction in the message, the element <komunikatTransakcjaOSPozStanMT> should not be used for the remaining transactions |
| TROSP0Z85 | Warning | The inventory levels of a product series that are not included in any transaction have been provided | In the STN transaction items there was an item <seria> that did not occur in any previous transaction |
| TROSP0Z86 | Warning | The approval number of the president of the URPL was not found in the registry of monitored products | <numerZgodyPrezesa> in <komunikatTransakcjaOSPoz> |
| TROSP0Z87 | Error | The attribute <numerZgodyPrezesa> was not provided | <numerZgodyPrezesa> in <komunikatTransakcjaOSPoz> |
| TROSP0Z88 | Warning | Invalid 'numerZgodyPrezesa' entered. Check whether the entered number complies with the UR/Z/4x/nnn/rr format, e.g. UR/Z/4c/063/23 | <numerZgodyPrezesa> in <komunikatTransakcjaOSPoz> |
| TROSP0Z89 | Warning | The EAN code provided does not match the numerZgodyPrezesa number entered | <kodEAN> in <komunikatTransakcjaOSPoz> |
| TROSP0Z90 | Error | The attribute < kodEAN > was not provided | <kodEAN> in <komunikatTransakcjaOSPoz> |
| TROSP0Z91 | Warning | One type of transaction has been specified for which the reporting process has been simplified. Report the ZKU Purchase transaction instead of the transactions (ZPR and ZIM), the SPR Sale transaction instead of the transactions (SWY and SEK), the PKU Warehouse Receipt transaction instead of the transactions (PPR and PIM), or the WPR Warehouse Issue transaction instead of the transactions (WWY and WEK) | <rodzajTransakcji> in <komunikatTransakcja> |



6.4. Transaction validation in the shortage report message

| Rule domain code | Verification status | Description of error or warning | Message element / Other comments |
|------------------|---------------------|-------------------------------------------------------------------------------------------------------------------------------------------------------------------------------------------------------------------------------------------------------------------------------------------------------------------------------------------------------------------------------------------------------|----------------------------------------------------|
| TRZB1 | Warning | The EAN code provided was not found in the monitored products registry. | <kodEAN> in <komunikatTransakcja> |
| TRZB2 | Error | The number of no product has been given with a value less than or equal to zero. | <liczbaBraku> |
| TRZB3 | Error | The provided EAN code is incorrect. | <kodEAN> in <komunikatTransakcja> |
| TRZB4 | Error | The transaction date is for the future. | <dataCzasTransakcji> |
| TRZB5 | Error | The transaction date refers to the period before reporting to ZSMOPL. | <dataCzasTransakcji> is earlier than 01/04/2019 |
| TRZB6 | Error | Failure date earlier than 7 days. | <dataCzasTransakcji> |
| TRZB7 | Warning | OTC products are not subject to shortage reporting | <kodEAN> in <komunikatTransakcja> |
| TRZB8 | Warning | The shortage report quantity limit for the product has been exceeded The alert is reported for each GTIN for which the sum of the quantity of the reported shortage under all transactions related to a given GTIN in a given ZB message exceeds the limit: <ul style="list-style-type: none"> • 100 items for general pharmacies • 1000 items for hospital pharmacies | <kodEAN> in <komunikatTransakcja> |

6.5. Transaction validation in the delivery planning message

| Rule domain code | Verification status | Description of error or warning | Message element / Other comments |
|------------------|---------------------|---------------------------------------------------------------------------------------------------------------------------------------------------------------------------------------------|----------------------------------------------------|
| TRPD1 | Warning | The EAN code provided was not found in the monitored products registry. | <kodEAN> in <komunikatTransakcja> |
| TRPD2 | Error | The provided EAN code is incorrect. | <kodEAN> in <komunikatTransakcja> |
| TRPD3 | Error | Entered starting date of planning is earlier than the reporting date. | <dataPoczatkowa> earlier than <dataCzasTransakcji> |
| TRPD4 | Error | Entered end date is earlier than the starting date. | <dataKoncowa> earlier than <dataPoczatkowa> |
| TRPD8 | Error | No plan items in the "delivery plan" transaction (PL) are specified. | <rok> <miesiac> <>wielkosc> |
| TRPD12 | Error | The transaction date is for the future. | <dataCzasTransakcji> |
| TRPD13 | Error | The transaction date refers to the period before reporting to ZSMOPL. | <dataCzasTransakcji> is earlier than 01/04/2019 |
| TRPD14 | Error | You can plan the delivery plan until December 31 of the next year | <rok> |
| TRPDPLAN9 | Error | Entered volume of delivery in the plan item is lesser than zero. | <wielkosc> |
| TRPDPLAN10 | Error | The value of the year and the number of the month in the year under the heading of the supply plan does not fall within the period determined by the start and end date of the supply plan. | <rok> <miesiac> |

| Rule domain code | Verification status | Description of error or warning | Message element / Other comments |
|------------------|---------------------|-----------------------------------------------------------------------------------------------------------------------------------------------------------------------------------|----------------------------------|
| TRPDPLAN14 | Error | The type of the planned place of delivery is different than a wholesaler, pharmacy or the healthcare facility | <rodzajMiejscaDostawy> |
| TRPDPLAN15 | Error | The given identifier of the pharmaceutical wholesaler, indicated as the planned place of delivery, was not found in the Register of Pharmaceutical Wholesalers | <idMiejscaDostawy> |
| TRPDPLAN16 | Error | The given pharmacy identifier, indicated as the intended place of delivery, was not found in the Pharmacy Register | <idMiejscaDostawy> |
| TRPDPLAN17 | Error | The provided REGON (9 characters) of the healthcare entity, indicated as the planned place of delivery, was not found in the Register of Entities Performing Medicinal Activities | <idMiejscaDostawy> |
| TRPDPLAN18 | Warning | The pharmacy indicated as the place of the planned delivery in the Register of Pharmacies does not have the active or pending status | <idMiejscaDostawy> |
| TRPDPLAN19 | Warning | The wholesaler indicated as the place of the planned delivery in the Register of Pharmaceutical Wholesalers does not have the active or pending status | <idMiejscaDostawy> |
| TRPDPLAN20 | Warning | The healthcare entity indicated as the place of the planned delivery in the the Register of Entities Performing Medicinal Activities does not have an active status | <idMiejscaDostawy> |
| TRPDPLAN21 | Error | Do not provide a place of delivery for deliveries | <miejsceDostawy> |
| TRPDPLAN22 | Error | The scheduled delivery date is incorrect. It is not possible to schedule a delivery for a month that has already started or for months that have already ended | <rok> <miesiac> |

7. Message header specification

Application of the reporting entities should send messages with signature and certificate used for signature. This information should be contained in the message header (<soapenv:Header>). The header should include the “wsse:Security” element to ensure security in the SOAP protocol. This element should have defined namespaces by adding of the following elements:

- xmlns:wsse=”http://docs.oasis-open.org/wss/2004/01/oasis-200401-wss-wssecurity-secext-1.0.xsd”
- xmlns:wssu=”http://docs.oasis-open.org/wss/2004/01/oasis-200401-wss-wssecurity-utility-1.0.xsd”

The “wsse:Security” element consists in the following elements:

- wsse:BinarySecurityToken element – containing the certificate chain with public key
 - Define the element: EncodingType=”http://docs.oasis-open.org/wss/2004/01/oasis-200401-wss-soap-message-security-1.0#Base64Binary”
 - Define the element: ValueType=”http://docs.oasis-open.org/wss/2004/01/oasis-200401-wss-x509-token-profile-1.0#X509PKIPathv1”
 - Define the element wsu:Id with unique element ID
- ds:Signature element – contains e-signature of the <soapenv:Body>section content
 - Define the namespace element: xmlns:ds=”http://www.w3.org/2000/09/xmldsig#”
 - ds:SignedInfo element
 - ds:CanonicalizationMethod element
 - Define the element: Algorithm=”http://www.w3.org/2001/10/xml-exc-c14n#”
 - element ds:SignatureMethod
 - Define the element: Algorithm=”http://www.w3.org/2000/09/xmldsig#rsa-sha1”
 - ds:Reference element
 - Define the URI element, value of which is the reference for the soapenv:Body element (URI values should be identical to the value of wsu:Id attribute preceded with hash #)
 - Define the element: ds:Transforms
 - Define the element: ds:Transform
 - Define the element: Algorithm=”http://www.w3.org/2001/10/xml-exc-c14n#”
 - Define the element: ds:DigestMethod
 - Define the element: Algorithm=”http://www.w3.org/2000/09/xmldsig#sha1”
 - Define the element: ds:DigestValue
 - ds:SignatureValue element with signature value
 - ds:KeyInfo element
 - wsse:SecurityTokenReference element
 - wsse:Reference element

» **Message header specification**

- Define the URI element as a reference i.e. with the value identical as the value of wsu:Id of the wsse:BinarySecurityToken element preceded with hash.



8. Message status

You can check the verification status of previously sent messages in two ways. The first way is to use the portal, where in the "Komunikaty" section using a filter, you can search for the message we are interested in.

The second method is to use a dedicated service for this purpose, by sending a message, the structure of which is described in chapter 5.1.4.

WebService address and WSDL in a production environment:

WebService address: <https://zsmopl.ezdrowie.gov.pl/cxf/statuskomunikatdmz/>

WSDL: <https://zsmopl.ezdrowie.gov.pl/cxf/statuskomunikatdmz?wsdl>

WebService address and WSDL in the integration (evaluation) environment:

WebService address: <https://ewa-zsmopl.ezdrowie.gov.pl/cxf/statuskomunikatdmz/>

WSDL: <https://ewa-zsmopl.ezdrowie.gov.pl/cxf/statuskomunikatdmz?wsdl>

8.1. Example of a service call

zapytajOStatusKomunikatu – question about the status of the ID message =155204078562714774

```
<soapenv:Envelope xmlns:soapenv="http://schemas.xmlsoap.org/soap/envelope/"
xmlns:stat="http://cez.gov.pl/zsmopl/ws/statuskomunikatdmz/">
<soapenv:Header/>
<soapenv:Body>
  <stat:zapytajOStatusKomunikatu>
    <komunikat>
      <identyfikikatorKomunikatu>155204078562714774</identyfikikatorKomunikatu>
    </komunikat>
  </stat:zapytajOStatusKomunikatu>
</soapenv:Body>
</soapenv:Envelope>
```

8.2. Examples of correct answers

Example of service response in case the message sent to ZSMOPL has the status „Poprawny”:

```
<soap:Body wsu:Id="id-9BC23361F05BAF38B2155204079601511424" xmlns:wsu="http://docs.oasis-open.org/wss/2004/01/oasis-200401-wss-wssecurity-utility-1.0.xsd">
  <ns2:statusOdpowiedz xmlns:ns2="http://cez.gov.pl/zsmopl/ws/statuskomunikatudmz/">
    <statusKomunikatu>
      <identyfikatorKomunikatu>155204078562714774</identyfikatorKomunikatu>
      <statusKomunikatu>Poprawny</statusKomunikatu>
    </statusKomunikatu>
  </ns2:statusOdpowiedz>
</soap:Body>
</soap:Envelope>
```

Example of service response in case the message sent to ZSMOPL has the status „Poprawny z ostrzeżeniem”:

```
<soap:Body wsu:Id="id-9BC23361F05BAF38B2155204137777611479" xmlns:wsu="http://docs.oasis-open.org/wss/2004/01/oasis-200401-wss-wssecurity-utility-1.0.xsd">
  <ns2:statusOdpowiedz xmlns:ns2="http://cez.gov.pl/zsmopl/ws/statuskomunikatudmz/">
    <statusKomunikatu>
      <identyfikatorKomunikatu>155204136201040428</identyfikatorKomunikatu>
      <statusKomunikatu>Poprawny z ostrzeżeniami</statusKomunikatu>
      <transakcja>
        <dataCzasTransakcji>2019-02-26 23:58:15.06</dataCzasTransakcji>
        <lp>1</lp>
        <blad>
          <lpWTransakcji>1</lpWTransakcji>
          <kodBledu>TROSP0Z32</kodBledu>
          <opisBledu>Podany kod EAN produktu nie został znaleziony w rejestrze produktów monitorowanych.</opisBledu>
          <wartoscBledna>00978020137962</wartoscBledna>
          <konsekwencja>Ostrzeżenie</konsekwencja>
        </blad>
      </transakcja>
    </statusKomunikatu>
  </ns2:statusOdpowiedz>
</soap:Body>
```

Example of service response in case the message sent to ZSMOPL has the status „Błędny”, in case of errors at the transaction level or position in the transaction (TROS, TROSP0Z):

```
<soap:Body wsu:Id="id-9BC23361F05BAF38B2155204019700111389" xmlns:wsu="http://docs.oasis-open.org/wss/2004/01/oasis-200401-wss-wssecurity-utility-1.0.xsd">
```

```
<ns2:statusOdpowiedz xmlns:ns2="http://cez.gov.pl/zsmopl/ws/statuskomunikatudmz/">
```

```
<statusKomunikatu>
```

```
<identyfikatorKomunikatu>155204018194534477</identyfikatorKomunikatu>
```

```
<statusKomunikatu>Błędny</statusKomunikatu>
```

```
<transakcja>
```

```
<dataCzasTransakcji>2019-02-26 23:58:15.06</dataCzasTransakcji>
```

```
<lp>1</lp>
```

```
<blad>
```

```
<lpWTransakcji>1</lpWTransakcji>
```

```
<kodBledu>TROSP0Z44</kodBledu>
```

```
<opisBledu>Nie podano informacji o stanach magazynowych, która jest wymagana dla podanego rodzaju transakcji.</opisBledu>
```

```
<konsekwencja>Błąd</konsekwencja>
```

```
</blad>
```

```
</transakcja>
```

```
<transakcja>
```

```
<dataCzasTransakcji>2019-02-26 23:58:35.746</dataCzasTransakcji>
```

```
<lp>2</lp>
```

```
<blad>
```

```
<lpWTransakcji>4</lpWTransakcji>
```

```
<kodBledu>TROSP0Z70</kodBledu>
```

```
<opisBledu>Podany kod EAN produktu jest niepoprawny.</opisBledu>
```

```
<wartoscBledna>blad05909990637997</wartoscBledna>
```

```
<konsekwencja>Błąd</konsekwencja>
```

```
</blad>
```

```
</transakcja>
```

```
</statusKomunikatu>
```

```
</ns2:statusOdpowiedz>
```

```
</soap:Body>
```

```
</soap:Envelope>
```


Example of service response in case the message sent to ZSMOPL has the status „Błędny”, in case of errors at the message header level (KM):

```
<ns2:statusOdpowiedz xmlns:ns2="http://cez.gov.pl/zsmopl/ws/statuskomunikatudz/">
  <statusKomunikatu>
    <identyfikatorKomunikatu>155240368954014534</identyfikatorKomunikatu>
    <statusKomunikatu>Błędny</statusKomunikatu>
    <blad>
      <kodBledu>KM2</kodBledu>
      <opisBledu> Wystąpiła niezgodność pomiędzy elementami: identyfikator podmiotu raportującego,
rodzaj podmiotu raportującego, identyfikator miejsca prowadzenia działalności podmiotu raportującego,
rodzaj miejsca prowadzenia działalności podmiotu raportującego.</opisBledu>
      <wartoscBledna>A001377706; AP; 1011; MPDAP</wartoscBledna>
      <konsekwencja>Błąd</konsekwencja>
    </blad>
  </statusKomunikatu>
</ns2:statusOdpowiedz>
</soap:Body>
</soap:Envelope>
```

Example of service response in case the message sent to ZSMOPL has the status „Wycofany”:

```
</soap:Header>
<soap:Body wsu:Id="id-9bdfb9e1-bfe8-441a-b081-aa796d9b0315" xmlns:wsu="http://docs.oasis-
open.org/wss/2004/01/oasis-200401-wss-wssecurity-utility-1.0.xsd">
  <ns2:statusOdpowiedz xmlns:ns2="http://cez.gov.pl/zsmopl/ws/statuskomunikatudz/">
    <statusKomunikatu>
      <identyfikatorKomunikatu>156213931421954879</identyfikatorKomunikatu>
      <statusKomunikatu>Wycofany</statusKomunikatu>
    </statusKomunikatu>
  </ns2:statusOdpowiedz>
</soap:Body>
</soap:Envelope>
```

8.3. GetStatus error messages

Example of service response if the request is signed with a certificate not registered in ZSMOPL:

```
</soap:Header>
<soap:Body wsu:Id="id-d7497e2c-a946-43fe-a50b-e4b093f3a428" xmlns:wsu="http://docs.oasis-
open.org/wss/2004/01/oasis-200401-wss-wssecurity-utility-1.0.xsd">
  <ns2:statusOdpowiedz xmlns:ns2="http://cez.gov.pl/zsmopl/ws/statuskomunikatudmz/">
    <statusKomunikatu>
      <identyfikatorKomunikatu>156198234009905662</identyfikatorKomunikatu>
      <statusKomunikatu>Brak autoryzacji: Certyfikat nie został zarejestrowany</statusKomunikatu>
    </statusKomunikatu>
  </ns2:statusOdpowiedz>
</soap:Body>
</soap:Envelope>
```

An example of a service response if the question relates to a non-existing message number or a message from another entity:

```
</soap:Header>
<soap:Body wsu:Id="id-d7497e2c-a946-43fe-a50b-e4b093f3a428" xmlns:wsu="http://docs.oasis-
open.org/wss/2004/01/oasis-200401-wss-wssecurity-utility-1.0.xsd">
  <ns2:statusOdpowiedz xmlns:ns2="http://cez.gov.pl/zsmopl/ws/statuskomunikatudmz/">
    <statusKomunikatu>
      <identyfikatorKomunikatu>156198234009905662</identyfikatorKomunikatu>
      <statusKomunikatu>Identyfikator komunikatu jest niepoprawny, nie istnieje lub oczekuje na
przetworzenie</statusKomunikatu>
    </statusKomunikatu>
  </ns2:statusOdpowiedz>
</soap:Body>
</soap:Envelope>
```

Example of service response in case of internal ZSMOPL error:

```
</soap:Header>
<soap:Body wsu:Id="id-d7497e2c-a946-43fe-a50b-e4b093f3a428" xmlns:wsu="http://docs.oasis-
open.org/wss/2004/01/oasis-200401-wss-wssecurity-utility-1.0.xsd">
  <ns2:statusOdpowiedz xmlns:ns2="http://cez.gov.pl/zsmopl/ws/statuskomunikatudmz/">
    <statusKomunikatu>
      <identyfikatorKomunikatu>156198234009905662</identyfikatorKomunikatu>
      <statusKomunikatu>Wystąpił błąd połączenia z serwerem wewnętrznym. Proszę spróbować
ponownie później</statusKomunikatu>
    </statusKomunikatu>
  </ns2:statusOdpowiedz>
```

» **Message status**

```
</soap:Body>  
</soap:Envelope>
```



9. Stock inquiry

A request for warehouse status enables verification of warehouse statuses sent earlier by means of turnover and state messages (OS). The service is available through Webservice. The request must be confirmed with a current certificate of the entity.

WebService address and WSDL in a production environment:

WebService address: <https://zsmopl.ezdrowie.gov.pl/cxf/stanydmz>

WSDL: <https://zsmopl.ezdrowie.gov.pl/cxf/stanydmz?wsdl>

WebService address and WSDL in the integration (evaluation) environment:

WebService address: <https://ewa-zsmopl.ezdrowie.gov.pl/cxf/stanydmz>

WSDL: <https://ewa-zsmopl.ezdrowie.gov.pl/cxf/stanydmz?wsdl>

The number of queries is limited in time, and depends on the environment, i.e. other parameters are set on the production environment and others on the evaluation environment. Information about current settings is available on the CeZ website, in the KOMUNIKATY tab.

9.1. Example of a service call

```
<soapenv:Envelope xmlns:soapenv="http://schemas.xmlsoap.org/soap/envelope/"
xmlns:stan="http://cez.gov.pl/zsmopl/ws/stanydmz/">
  <soapenv:Header/>
  <soapenv:Body>
    <stan:zapytajOStanyMagazynowe>
      <komunikat>
        <idPodmiotuRaportujacego>
          <idBiznesowy>35259497</idBiznesowy>
          <rodzajPodmiotuRaportujacego>AP</rodzajPodmiotuRaportujacego>
        </idPodmiotuRaportujacego>
        <idMPDPodmiotuRaportujacego>
          <idBiznesowy>1111111</idBiznesowy>
          <rodzajMPDPodmiotuRaportujacego>MPDAP</rodzajMPDPodmiotuRaportujacego>
        </idMPDPodmiotuRaportujacego>
      </komunikat>
    </stan:zapytajOStanyMagazynowe>
  </soapenv:Body>
</soapenv:Envelope>
```

```

<soapenv:Envelope xmlns:soapenv="http://schemas.xmlsoap.org/soap/envelope/"
xmlns:stan="http://cez.gov.pl/zsmopl/ws/stanydmz/">
  <soapenv:Header/>
  <soapenv:Body>
    <stan:zapytajOStanyMagazynowe>
      <komunikat>
        <idPodmiotuRaportujacego>
          <idBiznesowy>395182791</idBiznesowy>
          <rodzajPodmiotuRaportujacego>HU</rodzajPodmiotuRaportujacego>
        </idPodmiotuRaportujacego>
        <idMPDPodmiotuRaportujacego>
          <idBiznesowy>900001</idBiznesowy>
          <rodzajMPDPodmiotuRaportujacego>MPDHU</rodzajMPDPodmiotuRaportujacego>
        </idMPDPodmiotuRaportujacego>
      </komunikat>
    </stan:zapytajOStanyMagazynowe>
  </soapenv:Body>
</soapenv:Envelope>

```

9.2. Service call and response examples with correct parameters

Example of response, when call parameters are correct and MPD has warehouse states:

```

<soap:Body wsu:Id="id-dd72490a-2539-4dde-99d2-36350acaf6f1" xmlns:wsu="http://docs.oasis-
open.org/wss/2004/01/oasis-200401-wss-wssecurity-utility-1.0.xsd">
  <ns2:stanyMagazynoweOdpowiedz xmlns:ns2="http://cez.gov.pl/zsmopl/ws/stanydmz/">
    <stanyMagazynowe>
      <statusZapytania>Zapytanie poprawne</statusZapytania>
      <liczbaPozostalychZapytan>1</liczbaPozostalychZapytan>
      <stan>
        <ean>05909990651535</ean>
        <numerSerii>Seria2</numerSerii>
        <stanIloscDostepny>63298.0000</stanIloscDostepny>
        <stanIloscDostepnySeria>11489.00000</stanIloscDostepnySeria>
        <stanIloscWstrzWycof>0.0000</stanIloscWstrzWycof>
        <stanIloscWstrzWycofSeria>0.0000</stanIloscWstrzWycofSeria>
        <dataCzasTransakcji>2019-09-17T00:00:00.000+02:00</dataCzasTransakcji>
      </stan>
      <stan>
        <ean>05909990651535</ean>
        <numerSerii>Seria1</numerSerii>

```

```
<stanIloscDostepny>7984368671.0000</stanIloscDostepny>
<stanIloscDostepnySeria>2.00000</stanIloscDostepnySeria>
<stanIloscWstrzWycof>0.0000</stanIloscWstrzWycof>
<stanIloscWstrzWycofSeria>0.0000</stanIloscWstrzWycofSeria>
<dataCzasTransakcji>2019-08-01T11:00:10.000+02:00</dataCzasTransakcji>
</stan>
</stanyMagazynowe>
</ns2:stanyMagazynoweOdpowiedz>
</soap:Body>
```

Note: The current product status is given in the item `<stanIloscDostepny>` in the section with the latest `<dataCzasTransakcji>`, in this example, it is the date =2019-09-17T00:00:00.000+02:00.

The states of the `<stanIloscDostepnySeria>` series are valid every time.

Similarly for suspended states.

Example of response when call parameters are correct and MPD is not in stock:

```
<soap:Body wsu:Id="id-251de460-c405-4bb8-8363-6098607cc899" xmlns:wsu="http://docs.oasis-
open.org/wss/2004/01/oasis-200401-wss-wssecurity-utility-1.0.xsd">
  <ns2:stanyMagazynoweOdpowiedz xmlns:ns2="http://cez.gov.pl/zsmopl/ws/stanydmz/">
    <stanyMagazynowe>
      <statusZapytania>Nie znaleziono stanów magazynowych</statusZapytania>
      <liczbaPozostalychZapytan>5</liczbaPozostalychZapytan>
    </stanyMagazynowe>
  </ns2:stanyMagazynoweOdpowiedz>
</soap:Body>
```

Example of response when call parameters are correct but query limit has been exceeded.

```
<soap:Body wsu:Id="id-bc8186cc-f8c7-4d19-abd8-0350e0918619" xmlns:wsu="http://docs.oasis-
open.org/wss/2004/01/oasis-200401-wss-wssecurity-utility-1.0.xsd">
  <ns2:stanyMagazynoweOdpowiedz xmlns:ns2="http://cez.gov.pl/zsmopl/ws/stanydmz/">
    <stanyMagazynowe>
      <statusZapytania>Przekroczono limit zapytan. Następane zapytanie możliwe: 2019-10-17
11:42:41.985</statusZapytania>
    </stanyMagazynowe>
  </ns2:stanyMagazynoweOdpowiedz>
</soap:Body>
```

9.3. Service getStan error messages

Answer when the call parameters are incorrect:

```
<soap:Body wsu:Id="id-f843a509-f101-4fbf-8aee-3674ee830784" xmlns:wsu="http://docs.oasis-open.org/wss/2004/01/oasis-200401-wss-wssecurity-utility-1.0.xsd">
  <ns2:stanyMagazynoweOdpowiedz xmlns:ns2="http://cez.gov.pl/zsmopl/ws/stanydmz/">
    <stanyMagazynowe>
      <statusZapytania>Wystąpiła niezgodność pomiędzy elementami: identyfikator podmiotu raportującego, rodzaj podmiotu raportującego, identyfikator miejsca prowadzenia działalności podmiotu raportującego, rodzaj miejsca prowadzenia działalności podmiotu raportującego</statusZapytania>
    </stanyMagazynowe>
  </ns2:stanyMagazynoweOdpowiedz>
</soap:Body>
```

Answer when the question was signed with a certificate not registered in ZSMOPL:

```
<soap:Body wsu:Id="id-7523d8ec-0751-40e2-a3b3-d52eb8b71a1d" xmlns:wsu="http://docs.oasis-open.org/wss/2004/01/oasis-200401-wss-wssecurity-utility-1.0.xsd">
  <ns2:stanyMagazynoweOdpowiedz xmlns:ns2="http://cez.gov.pl/zsmopl/ws/stanydmz/">
    <stanyMagazynowe>
      <statusZapytania>Brak autoryzacji: Certyfikat nie został zarejestrowany</statusZapytania>
    </stanyMagazynowe>
  </ns2:stanyMagazynoweOdpowiedz>
</soap:Body>
```

Example of service response in case of internal ZSMOPL error:

```
<soap:Envelope xmlns:soap="http://schemas.xmlsoap.org/soap/envelope/">
  <soap:Body>
    <soap:Fault>
      <faultcode>soap:Server</faultcode>
      <faultstring>Wystąpił błąd wewnętrzny systemu, proszę spróbować ponownie później.</faultstring>
      <detail>
        <bładDostepnosc xmlns="http://cez.gov.pl/zsmopl/ws/stanydmz/" />
      </detail>
    </soap:Fault>
  </soap:Body>
</soap:Envelope>
```

10. STN transaction

The STN transaction is a specific transaction that facilitates the reporting of an entity's inventory. By using the STN transaction, we have the option of summarizing the stock levels of all products that we have traded during the day at the end of the day, instead of providing these stocks each time with each transaction changing the stock level. As a result, the amount of data sent to ZSMOPL is reduced, and inventory reporting becomes easier.

If you want to report stock levels using STN transactions, you must define one STN transaction in the message, and provide items in it for all product series that appeared in previous transactions.

If you want to use inventory reporting with the use of STN transactions, you should remember a few rules:

- There can be only one STN transaction. If we want to use it, it must appear as the last in the sent message, i.e. have the highest Ip number from all transactions in the message, and there must be no subsequent transaction in the message. Otherwise, the KM9 error "STN transaction must be the last transaction in the message" will be reported
- All products and their series that appeared in the sent message must appear in the STN transaction. If an item in the STN transaction with status information is not created for a product series that occurred in any of the previous transactions, the error TROSP0Z83 - "No information about stock levels in the STN transaction was reported"
- When using the STN transaction, the stock levels should be entered in it and only in it. If the STN transaction appears in the message, while specifying the stock levels in previous transactions, the warning TROSP0Z84 will be reported - "The transaction item contains information about stock levels that was not required using the STN transaction". At the same time, the occurrence of the STN transaction in the message means that the TROSP0Z44 error is not reported for the transaction item, which means that there is no information about stock levels. The TROSP0Z44 error can be reported if a transaction item with no statuses is entered in the STN transaction itself.
- In the STN transaction, only the stock levels of these products and their series, which occurred in the previous transactions, should be given. If you specify a status in the STN transaction for a product series that did not occur in previous transactions, the warning TROSP0Z85 will be reported - "Product inventory levels have been entered and it does not appear in any transaction"