



# The User's Guide

## Integrated System for the Monitoring of Trade in Medicinal Products (ZSMOPL)

### Specification of messages for the purpose of software developers

Metrics			
Owner	CeZ		
Authors	CeZ		
Approved by:	Project Manager	Approved on:	27/03/2023
Version	2.56	Document status	Approved
Prepared on:	01/09/2015	Last modified on:	27/03/2023

Change history			
Changed on:	Version	Changed by:	Description of document change:
2022-01-12	2.48 System version ZSMOPL: 1.27.0	CeZ	Adding a new warning TRZB8 – " The shortage report quantity limit for the product has been exceeded"
2022-03-21	2.49 System version ZSMOPL 1.27.1	CeZ	Adding the TROSP0Z44 validation for the STN transaction if it includes the transaction item without stocks.  Improving the validation of TROSP0Z83 - differentiation of the product series  Improving the validation of TROSP0Z85 - differentiation of the product series  Disable TROSP0Z75 validation for STN transactions
2022.04.11	2.50 System version ZSMOPL 1.28.0	CeZ	Adding the TROS59 validation – The source document number was not specified  Adding the TROS60 validation – The healthcare facility indicated in the transaction as the entity of the other party currently in the Register of Entities Performing Medicinal Activities does not have the status of "Active"  The content of the message for TRZB2 has been changed to "The number of no product has been given with a value less than or equal to zero"
2022.08.24	2.51	CeZ	Adding the planned delivery location for the message in the Delivery planning message.

Change history			
Changed on:	Version	Changed by:	Description of document change:
	System version ZSMOPL 1.29.0		Adding new errors and warnings: <ul style="list-style-type: none"> <li>• TRPD14 (Error)</li> <li>• TRPDPLAN9 (Error)</li> <li>• TRPDPLAN10 (Error)</li> <li>• TRPDPLAN14 (Error)</li> <li>• TRPDPLAN15 (Error)</li> <li>• TRPDPLAN16 (Error)</li> <li>• TRPDPLAN17 (Error)</li> <li>• TRPDPLAN18 (Warning)</li> <li>• TRPDPLAN19 (Warning)</li> <li>• TRPDPLAN20 (Warning)</li> </ul> Delete error TRPD5
2022.11.09	System version ZSMOPL 1.29.1		Adding new errors and warnings: <ul style="list-style-type: none"> <li>• TROS61 (Error)</li> </ul>
2022.12.05	System version ZSMOPL 1.29.2	CeZ	Adding new errors and warnings: <ul style="list-style-type: none"> <li>• TRPDPLAN21 (Error)</li> </ul>
2023.03.27	System version ZSMOPL 1.30	CeZ	Expanding the message about turnovers and statuses with the approval number of the president of the URPL. Adding new errors and warnings: <ul style="list-style-type: none"> <li>• TROSPOZ86 &lt; numerZgodyPrezesa &gt; - The approval number of the president of the URPL was not found in the registry of monitored products.</li> </ul>

## Spis treści

1.	INTRODUCTION .....	5
2.	GLOSSARY OF TERMS.....	6
3.	MESSAGING MODEL .....	10
4.	WEBSERVICE OPERATION CALL.....	12
5.	MESSAGE STRUCTURE.....	18
5.1.	DESCRIPTION OF HELPER TYPES/CLASS .....	18
5.1.1.	<i>Trade and stock message</i> .....	20
5.1.2.	<i>Shortage report message</i> .....	31
5.1.3.	<i>Delivery planning message</i> .....	32
5.1.4.	<i>Status check message</i> .....	36
5.1.5.	<i>State check message</i> .....	36
6.	MESSAGE VALIDATION RULES .....	38
6.1.	MESSAGE VALIDATION FOR COMPLIANCE WITH TEMPLATE.....	38
6.2.	MESSAGE HEADER VALIDATION.....	39
6.3.	VALIDATION OF TRANSACTIONS IN THE TRADE AND STOCK MESSAGE .....	40
6.4.	TRANSACTION VALIDATION IN THE SHORTAGE REPORT MESSAGE .....	47
6.5.	TRANSACTION VALIDATION IN THE DELIVERY PLANNING MESSAGE.....	48
7.	MESSAGE HEADER SPECIFICATION .....	50
8.	MESSAGE STATUS.....	52
8.1.	EXAMPLE OF A SERVICE CALL.....	52
8.2.	EXAMPLES OF CORRECT ANSWERS .....	53
8.3.	GETSTATUS ERROR MESSAGES .....	56
9.	STOCK INQUIRY .....	58
9.1.	EXAMPLE OF A SERVICE CALL.....	58
9.2.	SERVICE CALL AND RESPONSE EXAMPLES WITH CORRECT PARAMETERS.....	59
9.3.	SERVICE GETSTAN ERROR MESSAGES.....	61
10.	STN TRANSACTION .....	62

## 1. Introduction

This document contains the description of information structure of the ZSMOPL messages. The document was drawn-up for the purposes of developers of software sending data to the ZSMOPL system in effect of detailed analysis carried out by the system contractor in Procurement no. 3 to the Contract No. CSIOZ/121/2014.



## 2. Glossary of terms

**Types of entities reporting the trade in monitored products.** The classification below is used at the stage or registration of a business entity in the ZSMOPL. When a specific business entity is displayed in two categories e.g. healthcare entity running and entity managing public pharmacy, it should be registered as two separate reporting entities – one of them as a AP-type entity and the second one as PW (in compliance with the description entered in the table below).

Symbol	Description	Reporting obligation
AP	A business entity running retail pharmacies, dispensaries, company’s pharmacies, other outside PA and PF categories, within its structure.	Trade and stock message. Shortage report message.
HU	A business entity running pharmaceutical wholesales within its structure.	Trade and stock message.
PW	An entity conducting healthcare activity	Trade and stock message. Shortage report message.
PO	Marketing authorisation holder.	Trade and stock message. Delivery planning message.

### Types of places of business of the reporting entity.

Symbol	Description
MPDAP	A pharmacy holding its ID in the Register of Pharmacies.
MPDHU	A pharmaceutical wholesale holding its ID in the Register of Pharmaceutical Wholesales.

### Connections between entities and places of business

Type of reporting entity	idBiznesowy of reporting entity	Type of reporting entity	idBiznesowyMPD of reporting entity	RodzajMPD of reporting entity
Marketing authorization holder, importer, producer	NIP or VATIN	PO	is not filled	is not filled
Medical entity	Number in RPWDL	PW	Pharmacy ID	MPDAP
Generally accessible pharmacy	REGON	AP	Pharmacy ID	MPDAP
Pharmaceutical wholesaler	REGON	HU	Wholesaler ID	MPDHU

**Types of entities with which the transaction of trade in medicinal products is made.** The following table indicates symbols and terms that are not classification of reporting entities however refer to classification of the other trading party in relation to the reporting entities.

Symbol	Descriptions
AP	An entity running a pharmacy (public, pharmacy point).
FP	Polish business entity other than PO, HU, AP, PW, PR.
FZH	Foreign business entity running a pharmaceutical wholesale.
FZI	Foreign business entity other than classified above.
FZO	Foreign business entity with a status of marketing authorisation holder.
HU	Entity running a pharmaceutical wholesale.
OF	Natural person.
PO	Marketing authorisation holder.
PR	Healthcare entity performing its activity as individual professional practice or group practice of physicians, dentists, nurses and midwives.
PW	An entity conducting healthcare activity other than PR.

**Types of place of business of the other party.** The other party = the entity with which the transaction is concluded.

Symbol	Description
MPDAP	A pharmacy with an identifier in the Pharmacy Register.
MPDHU	A pharmaceutical wholesaler with an identifier in the Register of Pharmaceutical Wholesales.
MPDPL	Healthcare facility of the medicinal entity with an identifier (REGON 14-character) in the Register of Entities Performing Medicinal Activity.

**Connections between other party entities and their places of business**

Type of other party entity	idBiznesowyPodm DrugaStrona	Type of reporting entity	IdMPDPodm DrugaStrona IdBiznesowy	IdMPDPodm DrugaStrona RodzajMPD PodmiotuRaportujace go
Marketing authorization holder, importer, producer	NIP	PO	Is not filled	Is not filled
Medical entity, transaction with a hospital pharmacy	REGON	PW	Pharmacy ID	MPDAP
Medical entity, transaction with a medical facility	REGON	PW	REGON14	MPDPL
Generally accessible pharmacy	REGON	AP	Pharmacy ID	MPDAP
Pharmaceutical wholesaler	REGON	HU	Wholesaler ID	MPDHU
Foreign entity	VATIN	FZO, FZH lub FZI	Is not filled	Is not filled
Medical practice	REGON	PR	Is not filled	Is not filled
Another polish entity	REGON	FP	Is not filled	Is not filled

**Types of transactions in the trade and stock message.**

Symbol	Description	Document requires specification of the other party to trade: - yes - no (in-house document)	Transaction category
ZKU	ZKU Purchase	yes	Purchase
SPR	SPR Sales	yes	Sale
PKU	PKU Warehouse reception	yes	Warehouse Reception
WPR	WPR Warehouse release	yes	Warehouse Release
WZR	WZR Return to supplier	yes	Warehouse Release
PZR	PZR Acceptance of return from the recipient	yes	Warehouse Reception
MWG	MGW Recall in the CPI decision	no	Availability status change
WWG	WWG Return to the supplier (withdrawal GIF)	yes	Warehouse Release
PWY	PWY Acceptance of return from recipient (withdrawal GIF)	yes	Warehouse Reception
PM+	PM+ Warehouse transfer within the assets of business entity – to increase in stock.	yes	Warehouse Reception
WM-	WM- Warehouse transfer within the assets of business entity – to decrease in stock.	yes	Warehouse Release
PZO	PZO Batch release	no	Warehouse Reception
WUT	WUT Disposal due to expiry date	no	Warehouse Release
WUI	WUI Disposal for other reason than expiry date.	no	Warehouse Release
WRO	WRO Internal spending for hospital ward	no	Warehouse Release
PRO	PRO Acceptance of a return from the hospital ward	no	Warehouse Reception

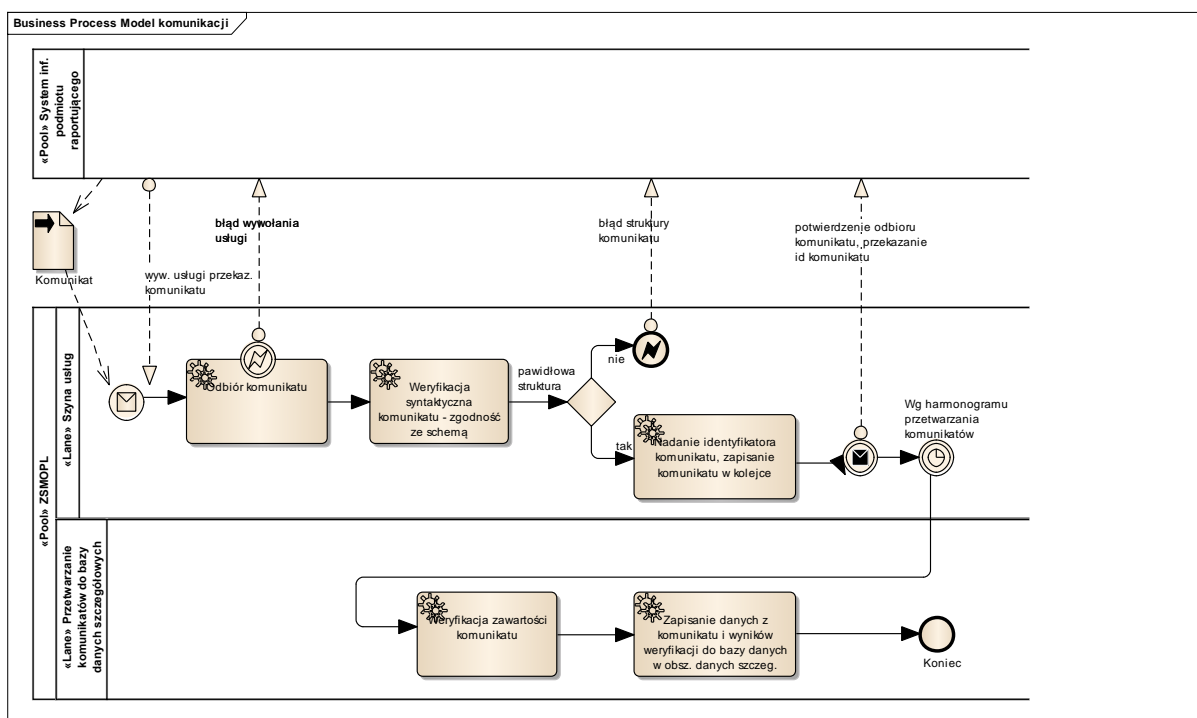


Symbol	Description	Document requires specification of the other party to trade: - yes - no (in-house document)	Transaction category
WRW	WRW Other internal spending	no	Warehouse Release
MWO	MWO Suspension in trade	no	Availability status change
MDO	MDO Authorised to the market	no	Availability status change
IBO	IBO Opening balance	no	Opening Balance
IR+	IR+ Stock difference – to increase in stock	no	Inventory
IR-	IR- Stock difference – to decrease in stock	no	Inventory
INW	INW Inventory	no	Inventory
STN	STN availability	No	Stock status

\* Usage of STN transactions is described in chapter 10

### 3. Messaging model

The diagram below presents the Messaging model between the IT system of the reporting entity and the ZSMOPL system.



Messaging model is of universal nature – applies to all types of messages passed from the IT systems of the reporting entities to the ZSMOPL.

- The IT system calls the ZSMOPL message passing service. In the case of errors at the stage of service call, the IT system of the reporting entity obtains an error report.
- The first stage of message validation is checking compliance with the passed message with the XML Schema. In the case of any identified non-compliance with the format, the entire message is rejected – no message items are analysed (CeZ shall publish the XML Schema used at this stage of validation to enable the software vendors checking the compliance of generated messages by their own). When the message structure error is detected, the entire message is rejected (no message items are analysed) and the IT system of the reporting entity obtains a structure error report. If the message structure is valid, the ZSMOPL service bus generates the message ID, saves the message in the queue and sends back information containing the message reception confirmation and generated message ID to the IT system of the reporting entity.
- Messages stored in the message queue are processed asynchronously as scheduled. Processing consists in validation of message for compliance with the validity rules. Logical description of rules is entered in this document below, respectively for the message type. The check results in confirmed validity or identified invalidity in the form of error or warning.
- The status of the message sent to ZSMOPL and a possible list of errors can be checked in two ways:
  - after logging into the ZSMOPL portal - by using the “Komunikaty” (“Messages”) tile. The results of checking the messages are made available for reporting entities on the ZSMOPL

Portal. Portal users, representatives of reporting entities can review the correctness results with accuracy to entire messages and individual transactions as part of messages and positions within the transaction. If an error is found in the message item (in a single transaction), the entire message is treated as erroneous. Verification results are given in quantitative form (number of transactions in the message, number of errors, number of transactions with warnings) and descriptive in the form of a list of errors and warnings. The condition for correctly displaying the error list on the ZSMOPL Portal is signing the message with a valid certificate imported to ZSMOPL on the account of the reporting entity.

- by using a dedicated service - sending a status check message, the structure of which is described in chapter 5.1.4. Delivery planning message - it is used to check the status of verification of a previously sent trade and stock message, missing or planned delivery. The message is sent using the method <zapytajOStatusKomunikatu>. A detailed description of the implementation can be found in the chapters: 4. Webservice operation call and 8. Message status. The condition for a correct answer is to sign the message with a valid certificate imported to ZSMOPL on the account of the reporting entity.
- The MPD inventory in ZSMOPL can be checked by using a dedicated service - sending a status check message, the structure of which is described in chapter 5.1.5. Status check message - is used to check the current inventory status of a given reporting unit. The message is sent using the <zapytajOStanyMagazynowe> method. A detailed description of the implementation is in the chapters: 4. Webservice operation call and 9. Stock inquiry. The condition of correct answer is signing the message with a valid certificate imported into ZSMOPL on the reporting entity's account.

## 4. Webservice operation call

The ZSMOPL production environment is available at:

<https://zsmopl.ezdrowie.gov.pl>

**Adres Webservice:** <https://zsmopl.ezdrowie.gov.pl/cxf/zsmopl/ws/>

**WSDL:** <https://zsmopl.ezdrowie.gov.pl/cxf/zsmopl/ws/?wsdl>

**XSD:** <https://zsmopl.ezdrowie.gov.pl/cxf/zsmopl/ws/?xsd=../mt/mt.xsd>

The integration (evaluation) environment of ZSMOPL is available at:

<http://ewa-zsmopl.ezdrowie.gov.pl/>

**Adres Webservice:** <https://ewa-zsmopl.ezdrowie.gov.pl/cxf/zsmopl/ws/>

**WSDL:** <https://ewa-zsmopl.ezdrowie.gov.pl/cxf/zsmopl/ws/?wsdl>

**XSD:** <https://ewa-zsmopl.ezdrowie.gov.pl/cxf/zsmopl/ws/?xsd=../mt/mt.xsd>

According to the messaging model described in the “Messaging model” chapter above, the reporting entities should connect with ZSMOPL to send messages. A message contains the transaction datasets i.e. it consists in one or more transactions. Messages can be divided by types:

- Trade and stock message (**OS**) – it is used to collect data on wholesale and retail trade in monitored products. The message is send using the zapiszKomunikatOS method. To this end, insert the XML element <zapiszKomunikatOS> in the body of the message to be sent. The message structure must comply with the scheme described in the “[Trade and stock message](#)” chapter. After the message is sent, we receive a reply in a form of a Soap document i.e. a header and content. The content includes <zapiszKomunikatOSResponse> containing an important element <identyfikatorKomunikatu> and sent message ID value in the ZSMOPL system. <identyfikatorKomunikatu> is of IdentyfikatorKomunikatuMT type, description of which is entered further in the “Message structure” chapter.
- Shortage report message (**ZB**) – it is used to collect data on shortages of medicinal products on the market. The message is sent using the zapiszKomunikatZB method. To this end, insert the XML element <zapiszKomunikatZB> in the body of the message to be sent. The message structure must comply with the scheme described in the “[Shortage report message](#)” chapter. After the message is sent, we receive a reply in a form of a Soap document i.e. a header and content. The content includes <zapiszKomunikatZBResponse> containing an important element <identyfikatorKomunikatu> and sent message ID value in the ZSMOPL system. <identyfikatorKomunikatu> is of IdentyfikatorKomunikatuMT type, description of which is entered further in the “Message structure” chapter.
- Delivery planning message (**PD**) – it is used to collect data on delivery schedule. The message is sent using the zapiszKomunikatZB method. To this end, insert the XML element <zapiszKomunikatPD> in the body of the message to be sent. The message structure must comply with the scheme described in the “[Delivery planning message](#)” chapter. After the message is sent, we receive a reply in a form of a Soap document i.e. a header and content. The content includes <zapiszKomunikatPDResponse> zawierający istotny element

<identyfikatorKomunikatu> containing an important element <identyfikatorKomunikatu> and sent message ID value in the ZSMOPL system. <identyfikatorKomunikatu> is of IdentyfikatorKomunikatuMT type, description of which is entered further in the "Message structure" chapter.

- Status check message (getStatus) - it is used to check the status of verification of previously sent trade and stock message, reporting shortages or planning deliveries. The message is sent using the method `zapytajOStatusKomunikatu`. To do this, put an XML element `<zapytajOStatusKomunikatu>` in the body of the message being sent. The message structure must comply with the diagram described in the section "Status check message". After sending the message, we get a reply in the form of a Soap document, ie the headline with the content. The content contains `<statusOdpowiedz>` containing the elements: `<identyfikatorKomunikatu>`, `<statusKomunikatu>` and `<blad>`, whose elements are described in chapters 6.2, 6.3, 6.4 and 6.5.
- Check status message (getStan) - used to check the current stock level of a given reporting unit. The message is sent using the `<zapytajOStanyMagazynowe>` method. To do this, place the XML element `<zapytajOStanyMagazynowe>` in the body of the message being sent. The structure of the message must comply with the diagram described in the "Status check message" chapter. After sending the message, we get a reply in the form of a Soap document, i.e. the header with the content. The content includes `<stanyMagazynoweOdpowiedz>` containing the elements: `<statusZapytania>`, `<liczbaPozostalychZapytan>` and `<stan>` for each EAN code and serial number.

Please note that each message type has its individual structure.

Any sent document includes a parent marker `<soapenv:Envelope>` containing the `<soapenv:Header>` marker and the `<soapenv:Body>` marker required in the sent document.

`<soapenv:Header>` marker contains information on the envelope security measures (authentication, message summary). Find more in the „[Message header specification](#)” section.

**Example <soapenv:Envelope> and <soapenv:Header>:**

```
<soapenv:Header><wsse:Security xmlns:wsse="http://docs.oasis-open.org/wss/2004/01/
oasis-200401-wss-wssecurity-secext-1.0.xsd" xmlns:wsu="http://docs.oasis-open.org/wss/2004/01/
oasis-200401-wss-wssecurity-utility-1.0.xsd"><wsse:BinarySecurityToken EncodingType="http://
docs.oasis-open.org/wss/2004/01/oasis-200401-wss-soap-message-security-1.0#Base64Binary" ValueType="http://
docs.oasis-open.org/wss/2004/01/oasis-200401-wss-x509-token-profile-1.0#X509PKIPathv1" wsu:Id="
X509-925981AA89D6C41EB3144465584498121">MIIGQDCCA2owggJSoAMCAQICQCcUBuTAUz+owzANBqkqhkiG9w0BAQsFADBFMQswCQYDVQ
QGwwJBTETMBEQA1UECAwKU29tZS1TdGF0ZTEhMB8GA1UECgwYSW50ZXJ1ZXZlZDk2MjZlcyBQdHkgTHRkMB4XDTE1MTAwMTE0MDMyNVoXDTE2
MDkzMDE0MDMyNVoRTElMAkGA1UEBhMCVUxEzARBgNVBAgMC1NvbWUtU3RhdGUxITAFBgNVBAMoMGE1udGVybmV0IFdpZGdpdHMgUHR5IEExOZD
CCASIdDQYJKoZIhvcNAQEBBQADgEPADCCAQoCggEBAN/7gzy818yt6pojNDG0K63bMGSaLLAadFfsk9vXdeuLEFWPMjFR6nyWIOWi7tSdIuNz
DQ8MtMP0fx/zDZdGvFzQTMkYkBeaxKEpq9fyZdjC41Y+QuWYvJif4xGym/MgwSF2GEoLYQXr+pbx72wKM81Yc/
mAyHPTy7Ev+4Djd6V7dUq2pt5GDxEM2wywcl8uXdShthGCFIDZgm69PweZoUJW8C/cJ90yGVwdoICRnt34SM/2POdL/H22TPtMAF1Pq3cuDiY
m+MSUfXFavG0eHxfajUvFEDNXS7ggX8mVbxH+76uI4YJzSbd1f1fn0MayqRHL0ghLbJUBGK5xzUcCAwEAAANdMFswHQYDVR0OBBYEFFPAX1e
7dMjLUU4MXr1xBHYG0XKDM8GA1UdIwQYMBAfFPPAX1e7dMjLUU4MXr1xBHYG0XKDMAwGA1UdEwQFMAMBAF8wCwYDVR0PBAQDAEGMA0GCSqG
S5Ib3DQEBQAGwEABAGvPjYOKR8K5tKuyWkXJX3nJMEioqFkLCVAeAlyCL09kFMA5vpee8q4d41St4/
1E1mEz2UXl2VzGact8rEQL+I3MbKX8osRkicVFNTFyvEL8+hsM9uupZ0/tFYH+jWYWE8s35y/
w5JY1Ea4PJe14ymXowr7XhBEZ30P6L1weasuvOVVsEqVwScziRxCumY6h1M4aLWxHnBvJxFpdB3zK5yWiLsCYJ4yTDiYTXccPegQdpRmK3JiV
/TMSFVYVRIJH0tbn6S2R29EZHEHYP6bEpZIReSyoboIif9sJgbrJUGQv8RjLsmf/ZLbs+f1D45orB7unk9a/s5TmFvbnGTIA=</wsse:
BinarySecurityToken><ds:Signature Id="SIG-925981AA89D6C41EB3144465584498225" xmlns:ds="http://www.w3.org/2000/
09/xmldsig#"><ds:SignedInfo><ds:CanonicalizationMethod Algorithm="http://www.w3.org/2001/10/xml-exc-c14n#"><ec
:InclusiveNamespaces PrefixList="obs soapenv" xmlns:ec="http://www.w3.org/2001/10/xml-exc-c14n#"></ds:
CanonicalizationMethod><ds:SignatureMethod Algorithm="http://www.w3.org/2000/09/xmldsig#rsa-sha1"><ds:
Reference URI="#id-925981AA89D6C41EB3144465584498124"><ds:Transforms><ds:Transform Algorithm="http://
www.w3.org/2001/10/xml-exc-c14n#"><ec:InclusiveNamespaces PrefixList="obs" xmlns:ec="http://www.w3.org/2001/10/
xml-exc-c14n#"></ds:Transform></ds:Transforms><ds:DigestMethod Algorithm="http://www.w3.org/2000/09/
xmldsig#sha1"><ds:DigestValue>eXyR08F9i3u8Q3bJvcW6e/es8=</ds:DigestValue></ds:Reference></ds:SignedInfo><ds
:SignatureValue> NS45ULI7S81aXmchf37F52y6va/4k4JjKzxi5xwGRs7c11Emmv/NaYCo7RXCg0aVQT67nrsCIO
PR2Bcn5Y0iYKQ1016U4bv69K5g24oZY4Q+RDfeC7q1fKFNXl5bndd2KvpfRbD5Tj9bz5KJv6DeDJ
bETaas/9fWolZpdIkZD+BEp/59NUN9DuYJG1j7tCyv1md7DxHsQLHJBaPp7uUyL5In++Mc+hgNsk
e/q3e0vJ9IwHthDa0gQ0KfSXY+CL89/5Bxu4wdG7yvvSmzbxHotJ57ckXXl1e05dqrtb2Uxf0vmQ
peSOjWbyve5Q77d95rodn3AUxn55t3qG7diRew==</ds:SignatureValue><ds:KeyInfo Id="
KI-925981AA89D6C41EB3144465584498122"><wsse:SecurityTokenReference wsse11:TokenType="http://
docs.oasis-open.org/wss/2004/01/oasis-200401-wss-x509-token-profile-1.0#X509PKIPathv1" wsu:Id="
STR-925981AA89D6C41EB3144465584498123" xmlns:wsse11="http://docs.oasis-open.org/wss/
oasis-wss-wssecurity-secext-1.1.xsd"><wsse:Reference URI="#X509-925981AA89D6C41EB3144465584498121" ValueType="
http://docs.oasis-open.org/wss/2004/01/oasis-200401-wss-x509-token-profile-1.0#X509PKIPathv1"/></wsse:
SecurityTokenReference></ds:KeyInfo></ds:Signature></wsse:Security></soapenv:Header>
```

**Text version of the example:**

```
<soapenv:Envelope xmlns:obs="http://cez.gov.pl/zsmopl/ws/obslugakomunikatow/"
xmlns:soapenv="http://schemas.xmlsoap.org/soap/envelope/">
  <soapenv:Header><wsse:Security xmlns:wsse="http://docs.oasis-open.org/wss/2004/01/oasis-200401-
wss-wssecurity-secext-1.0.xsd" xmlns:wsu="http://docs.oasis-open.org/wss/2004/01/oasis-200401-wss-
wsssecurity-utility-1.0.xsd"><wsse:BinarySecurityToken EncodingType="http://docs.oasis-
open.org/wss/2004/01/oasis-200401-wss-soap-message-security-1.0#Base64Binary"
ValueType="http://docs.oasis-open.org/wss/2004/01/oasis-200401-wss-x509-token-profile-
1.0#X509PKIPathv1" wsu:Id="X509-
4C22315792029A223F155248949147711">MIIEOzCCBM8wggK3oAMCAQICAgdGMA0GCSqGSIb3DQEBCwU
AMIGTMQswCQYDVQQGwwJBTETMBEQA1UECAwLbWF6b3dpZWNraWUxETAPBgNVBACMFdhnN6YXdh
MQ4wDAYDVQQKDAVU0IPWjENMASGA1UECwwEV1JTVDERMA8GA1UEAwwIQ1NJT1ogQ0ExTAnBgkqhki
G9w0BCQEWGnAuZ29sZWJpZXZza2IAY3Npb3ouZ292LnBsMB4XDTE5MDMwNDE0MTUwMloXDTE1MDMyNVoX
DTE2MDkzMDE0MDMyNVoRTElMAkGA1UEBhMCVUxEzARBgNVBAgMC1NvbWUtU3RhdGUxITAFBgNVBAMoMGE1udGVybmV0IFdpZGdpdHMgUHR5IEExOZD
CCASIdDQYJKoZIhvcNAQEBBQADgEPADCCAQoCggEBAN/7gzy818yt6pojNDG0K63bMGSaLLAadFfsk9vXdeuLEFWPMjFR6nyWIOWi7tSdIuNz
DQ8MtMP0fx/zDZdGvFzQTMkYkBeaxKEpq9fyZdjC41Y+QuWYvJif4xGym/MgwSF2GEoLYQXr+pbx72wKM81Yc/
mAyHPTy7Ev+4Djd6V7dUq2pt5GDxEM2wywcl8uXdShthGCFIDZgm69PweZoUJW8C/cJ90yGVwdoICRnt34SM/2POdL/H22TPtMAF1Pq3cuDiY
m+MSUfXFavG0eHxfajUvFEDNXS7ggX8mVbxH+76uI4YJzSbd1f1fn0MayqRHL0ghLbJUBGK5xzUcCAwEAAANdMFswHQYDVR0OBBYEFFPAX1e
7dMjLUU4MXr1xBHYG0XKDM8GA1UdIwQYMBAfFPPAX1e7dMjLUU4MXr1xBHYG0XKDMAwGA1UdEwQFMAMBAF8wCwYDVR0PBAQDAEGMA0GCSqG
S5Ib3DQEBQAGwEABAGvPjYOKR8K5tKuyWkXJX3nJMEioqFkLCVAeAlyCL09kFMA5vpee8q4d41St4/
1E1mEz2UXl2VzGact8rEQL+I3MbKX8osRkicVFNTFyvEL8+hsM9uupZ0/tFYH+jWYWE8s35y/
w5JY1Ea4PJe14ymXowr7XhBEZ30P6L1weasuvOVVsEqVwScziRxCumY6h1M4aLWxHnBvJxFpdB3zK5yWiLsCYJ4yTDiYTXccPegQdpRmK3JiV
/TMSFVYVRIJH0tbn6S2R29EZHEHYP6bEpZIReSyoboIif9sJgbrJUGQv8RjLsmf/ZLbs+f1D45orB7unk9a/s5TmFvbnGTIA=</wsse:
BinarySecurityToken><ds:Signature Id="SIG-925981AA89D6C41EB3144465584498225" xmlns:ds="http://www.w3.org/2000/
09/xmldsig#"><ds:SignedInfo><ds:CanonicalizationMethod Algorithm="http://www.w3.org/2001/10/xml-exc-c14n#"><ec
:InclusiveNamespaces PrefixList="obs soapenv" xmlns:ec="http://www.w3.org/2001/10/xml-exc-c14n#"></ds:
CanonicalizationMethod><ds:SignatureMethod Algorithm="http://www.w3.org/2000/09/xmldsig#rsa-sha1"><ds:
Reference URI="#id-925981AA89D6C41EB3144465584498124"><ds:Transforms><ds:Transform Algorithm="http://
www.w3.org/2001/10/xml-exc-c14n#"><ec:InclusiveNamespaces PrefixList="obs" xmlns:ec="http://www.w3.org/2001/10/
xml-exc-c14n#"></ds:Transform></ds:Transforms><ds:DigestMethod Algorithm="http://www.w3.org/2000/09/
xmldsig#sha1"><ds:DigestValue>eXyR08F9i3u8Q3bJvcW6e/es8=</ds:DigestValue></ds:Reference></ds:SignedInfo><ds
:SignatureValue> NS45ULI7S81aXmchf37F52y6va/4k4JjKzxi5xwGRs7c11Emmv/NaYCo7RXCg0aVQT67nrsCIO
PR2Bcn5Y0iYKQ1016U4bv69K5g24oZY4Q+RDfeC7q1fKFNXl5bndd2KvpfRbD5Tj9bz5KJv6DeDJ
bETaas/9fWolZpdIkZD+BEp/59NUN9DuYJG1j7tCyv1md7DxHsQLHJBaPp7uUyL5In++Mc+hgNsk
e/q3e0vJ9IwHthDa0gQ0KfSXY+CL89/5Bxu4wdG7yvvSmzbxHotJ57ckXXl1e05dqrtb2Uxf0vmQ
peSOjWbyve5Q77d95rodn3AUxn55t3qG7diRew==</ds:SignatureValue><ds:KeyInfo Id="
KI-925981AA89D6C41EB3144465584498122"><wsse:SecurityTokenReference wsse11:TokenType="http://
docs.oasis-open.org/wss/2004/01/oasis-200401-wss-x509-token-profile-1.0#X509PKIPathv1" wsu:Id="
STR-925981AA89D6C41EB3144465584498123" xmlns:wsse11="http://docs.oasis-open.org/wss/
oasis-wss-wssecurity-secext-1.1.xsd"><wsse:Reference URI="#X509-925981AA89D6C41EB3144465584498121" ValueType="
http://docs.oasis-open.org/wss/2004/01/oasis-200401-wss-x509-token-profile-1.0#X509PKIPathv1"/></wsse:
SecurityTokenReference></ds:KeyInfo></ds:Signature></wsse:Security></soapenv:Header>
```

```
MzE0MTUwMl0wZTElMAkGA1UEBhMCUEwxFDASBgNVBAgMC21hem93aWVja2lIMREwDwYDVQQLHDAhXY
XJzemF3YTE0MAwGA1UECgwFSXZvbWExDTALBgNVBAsMBFdsSU1QxDjAMBgNVBAMMBUI3b25hMIIIBjANB
gkqhkiG9w0BAQEFAAOCAQ8AMIIBCgKCAQEAYZHP7QGdWz5Is+nxW2svWFFP1vxswmRRIcCnt8iP2TSwbg/d6
BpVdDRQKPtvsMpTupRNH5AqbtSc8wUHP9a1bN4xwPT20fPpHLZROJt9TsNxZFqbVH3+unD4s0zkk+VXRWYTV
vzkexGCqZS9T1TvkGYRdx00WjOLLhAiliAcDccWCohOcVlz4tKUnoI5oUwAf6tKLpBE8HQqn/TtzZSMtwp94ewq
mUSDHnV78JangYZcsrBRwGh5lmtYOWqJUQ6GpdMj5c6vWQus1G1oR/Gs6MbLukQJduniytb1jex9/OqnDzyB
dPUGuNVUVvSwDCA3W/zV6vniclo/4RLxYwQ/iQIDAQABo1owWDAdBgNVHQ4EFgQUxkDqWy2dDkqV5xaIE
MvW9eFGJGEwHwYDVR0jBBgwFoAUTs8M0KVR6RiLe9N/nuwN+I6TRuswCQYDVR0TBAlwADALBgNVHQ8EB
AMCBaAwDQYJKoZIhvcNAQELBQADggIBAAJ7G+v/3tTMijzkhJ2iFsAGmHdUcKeHSVUJ/5pzN+3WI6cmziRsbb
5a8TkMI8841+cj+Wuj550WQPC7a7S12oxAFewf6DPTT7sMo2bKEqLhLk0+n0YXm6F9LRbgtDFU3q4dEgS+Qlgu
VH/xYAosQzf/3LGf6kjeuR2CULtAqNYIA9s7OUctnC2D9kA5zte4HxHp51xpbTE5siwfvXmRfvxGW9hSiBSFToU
SoC6gYxkky4LcKpoK2Yfzx8ypVr2LQFLe+SdpOZQd9E/2GTedIDmqco+RrFb1o/nVLPpg0PDNym/zRpNPAQ18S
vulKQ0lz2JjygzLJwqBKL4c25B9AtbP1eHUWDWE8keHdwcO7lvjM5vCBHzn8Xj0PSy/pXtg9Ocx0wnPfcrtSotTO
aTxNVwiZbZNCiH+g8C1RAQlBa1EaXTVtC1NmhZNqmOUtdDxMB6CiQel/KUvnmqPY4KCKmlx2wW56/k+IXaM
s65AvsWVKLi+7RLJylq7JybrYJUbzYcksdZtkXM2v0NG+VN3ZrBPea6es4o7cAix8m3CQioRim6IDqIKRqs48tsqjJ
l4G7M05fb6gA7CK4iMoXvYefPH2fYcfqJy9eBLluXfW/ISK0nUevdLWWMFtY+ATymisgrME1j7WmitTnJ7JDEdR
mCO0+0sWjtHMP2mYien</wsse:BinarySecurityToken><ds:Signature Id="SIG-
4C22315792029A223F155248949148215"
xmlns:ds="http://www.w3.org/2000/09/xmldsig#"><ds:SignedInfo><ds:CanonicalizationMethod
Algorithm="http://www.w3.org/2001/10/xml-exc-c14n#"><ec:InclusiveNamespaces PrefixList="obs
soapenv" xmlns:ec="http://www.w3.org/2001/10/xml-exc-
c14n#" /></ds:CanonicalizationMethod><ds:SignatureMethod
Algorithm="http://www.w3.org/2000/09/xmldsig#rsa-sha1" /><ds:Reference URI="#id-
4C22315792029A223F155248949147714"><ds:Transforms><ds:Transform
Algorithm="http://www.w3.org/2001/10/xml-exc-c14n#"><ec:InclusiveNamespaces PrefixList="obs"
xmlns:ec="http://www.w3.org/2001/10/xml-exc-
c14n#" /></ds:Transform></ds:Transforms><ds:DigestMethod
Algorithm="http://www.w3.org/2000/09/xmldsig#sha1" /><ds:DigestValue>p2pBhuNQ6WzRDHGqbdI+I8la
gbU=</ds:DigestValue></ds:Reference></ds:SignedInfo><ds:SignatureValue>liqey4DsjDyxcbdOiidnujgZ5qP
wrjGZSHmcJCYliDp7DmwJSwPybo1GnUT4a0y+HYAg9KmGJRWU
/dQtfjSdl2mvoNBUIMxi5YQd1NXR/bz8p908SsgAQKdJa5RiWUxkt5vtl3JUJtfti/VgqRc40dmp
XgBBUzbAGu7ObE0FcLvrQfjuSm3RnkS3g52XCPovOd/TITlndx1LalnlNhsSUsRHM+oiR14iSLC
OHOhhwLuuha1ZuE7XK+eFXsCLb7pYEsfl8xznwgb+2fqrQH5ohQxFBUtbyhXlRkZ1fP7gDe9KWlv
MdbW5WHA0peX5ISw96Am0U/51IUUn9mTqW2tw==</ds:SignatureValue><ds:KeyInfo Id="KI-
4C22315792029A223F155248949147712"><wsse:SecurityTokenReference
wsse11:TokenType="http://docs.oasis-open.org/wss/2004/01/oasis-200401-wss-x509-token-profile-
1.0#X509PKIPathv1" wsu:Id="STR-4C22315792029A223F155248949147713"
xmlns:wsse11="http://docs.oasis-open.org/wss/oasis-wss-wssecurity-secext-1.1.xsd"><wsse:Reference
URI="#X509-4C22315792029A223F155248949147711" ValueType="http://docs.oasis-
open.org/wss/2004/01/oasis-200401-wss-x509-token-profile-
1.0#X509PKIPathv1" /></wsse:SecurityTokenReference></ds:KeyInfo></ds:Signature></wsse:Security></so
apenv:Header>
```

<soapenv:Body> marker is an actual content of the message i.e. transaction data sent by the reporting entities.

Examples and message structures are available at the webpage: [CeZ> Interoperacyjność> Interfejsy](#) section: [Zintegrowany System Monitorowania Obrotu Produktami Leczniczymi](#).

### Example <soapenv:Body>:

```
<soapenv:Body wsu:Id="id-925981AA89D6C41EB3144465557434614" xmlns:wsu="http://docs.oasis-open.org/wss/2004/01/oasis-200401-wss-wssecurity-utility-1.0.xsd">
  <obs:zapiszKomunikatZB>
    <komunikatZB>
      <idPodmiotuRaportujacego>
        <idBiznesowy>1234</idBiznesowy>
        <rodzajPodmiotuRaportujacego>AP</rodzajPodmiotuRaportujacego>
      </idPodmiotuRaportujacego>
      <idMPDPodmiotuRaportujacego>
        <idBiznesowy>1000165</idBiznesowy>
        <rodzajMPDPodmiotuRaportujacego>MPDAP</rodzajMPDPodmiotuRaportujacego>
      </idMPDPodmiotuRaportujacego>
      <komunikatTransakcja>
        <dataCzasTransakcji>2015-07-23T16:41:09.284136</dataCzasTransakcji>
        <lp>1</lp>
        <kodEAN>5909990840113</kodEAN>
        <liczbaBraku>5</liczbaBraku>
      </komunikatTransakcja>
      <komunikatTransakcja>
        <dataCzasTransakcji>2015-07-23T16:41:09.284136</dataCzasTransakcji>
        <lp>2</lp>
        <kodEAN>5909990907519</kodEAN>
        <liczbaBraku>2</liczbaBraku>
      </komunikatTransakcja>
      <komunikatTransakcja>
        <dataCzasTransakcji>2015-07-23T16:41:09.284136</dataCzasTransakcji>
        <lp>3</lp>
        <kodEAN>5909990335541</kodEAN>
        <liczbaBraku>2</liczbaBraku>
      </komunikatTransakcja>
    </komunikatZB>
  </obs:zapiszKomunikatZB>
</soapenv:Body>
```

### Example text version:

```
<soapenv:Body wsu:Id="id-925981AA89D6C41EB3144465557434614" xmlns:wsu="http://docs.oasis-open.org/wss/2004/01/oasis-200401-wss-wssecurity-utility-1.0.xsd">
  <obs:zapiszKomunikatZB>
    <komunikatZB>
      <idPodmiotuRaportujacego>
        <idBiznesowy>1234</idBiznesowy>
        <rodzajPodmiotuRaportujacego>AP</rodzajPodmiotuRaportujacego>
      </idPodmiotuRaportujacego>
      <idMPDPodmiotuRaportujacego>
        <idBiznesowy>1000165</idBiznesowy>
        <rodzajMPDPodmiotuRaportujacego>MPDAP</rodzajMPDPodmiotuRaportujacego>
      </idMPDPodmiotuRaportujacego>
      <komunikatTransakcja>
        <dataCzasTransakcji>2015-07-23T16:41:09.284136</dataCzasTransakcji>
```



```
<lp>1</lp>
<kodEAN>5909990840113</kodEAN>
<liczbaBraku>5</liczbaBraku>
</komunikatTransakcja>
<komunikatTransakcja>
  <dataCzasTransakcji>2015-07-23T16:41:09.284136</dataCzasTransakcji>
  <lp>2</lp>
  <kodEAN>5909990907519</kodEAN>
  <liczbaBraku>2</liczbaBraku>
</komunikatTransakcja>
<komunikatTransakcja>
  <dataCzasTransakcji>2015-07-23T16:41:09.284136</dataCzasTransakcji>
  <lp>3</lp>
  <kodEAN>5909990335541</kodEAN>
  <liczbaBraku>2</liczbaBraku>
</komunikatTransakcja>
</komunikatZB>
</obs:zapiszKomunikatZB></soapenv:Body>
```



## 5. Message structure

Entries in the „Format / Type” column shall mean as follows:

<b>Date</b>	Date saved in the format: YYYY-MM-DD
<b>Ddate + time</b>	Date and time saved in the format: YYYY-MM-DDTHH:MM:SS:MS (where T is a character separating date and time). UTC+01:00 time zone is default in a 24-hour system.
<b>Number, (m,n)</b>	A number containing maximally m digits, including n digits in the fraction part separated with a dot.
<b>To n characters</b>	The value of an element should be an inscription containing between 1 and n characters,
<b>Character string</b>	Any character string (maximally to 255 characters).
<b>IdentyfikatorMPDPodmiotuMT</b>	Data type described in chapter 5.1 <b>“Error! Reference source not found.”</b>
<b>IdentyfikatorKomunikatuMT</b>	Data type described in chapter 5.1 <b>“Error! Reference source not found.”</b> .
<b>IdentyfikatorPodmiotuRaportujacegoMT</b>	Data type described in chapter 5.1 <b>“Error! Reference source not found.”</b> chapter.

Character coding in compliance with UTF-8.

### 5.1. Description of helper types/class

NOTE: detailed information about the data scheme, including field length, data type, maturity / multiplicity is in the current XSD.

Type	Simple element	Multiplicity	Format	Description
IdentyfikatorKomunikatuMT				Message identifier.
	id	1	Number (18,0)	Message identifier.
IdentyfikatorMPDPodmiotuMT				ID of the place of business of the reporting entity.
	idBiznesowy	1	Character string	Business ID of the place of business of the reporting entity – from the domain specified in the element rodzajMPDPodmiotuRaportujacego: if rodzajMPDPodmiotuRaportujacego == 'MPDHU', ID from the Register of Wholesales. if rodzajMPDPodmiotuRaportujacego == 'MPDAP', ID from the Register of Pharmacies. White characters are not accepted in this element.
	rodzajMPDPodmiotuRaportujacego	1	To 5 characters	Type of place of business of the reporting entity: MPDHU – pharmaceutical wholesale holding the ID in the Register of Pharmaceutical Wholesales.

Type	Simple element	Multiplicity	Format	Description
				MPDAP – pharmacy holding the ID in the Register of Pharmacies.
IdentyfikatorMPDPodmiotuDrugaStronaMT				ID of the place of business of the reporting entity.
	idBiznesowy	0-1	Character string	Business ID of the place of business of the reporting entity – from the domain specified in the element rodzajMPDPodmiotuRaportujacegoDrugaStrona: if rodzajMPDPodmiotuRaportujacegoDrugaStrona == 'MPDHU', ID from the Register of Wholesales. if rodzajMPDPodmiotuRaportujacegoDrugaStrona == 'MPDAP' ID from the Register of Pharmacies. if rodzajMPDPodmiotuRaportujacegoDrugaStrona == 'MPDPL', ID of healthcare institution of the healthcare entity from the Register of Healthcare Entities – 14-digit REGON. Other entities (ie in the following types: PO, PR, FP, FZH, FZI, FZO, OF) - not applicable. White characters are not accepted in this element.
	rodzajMPDPodmiotuRaportujacegoDrugaStrona	0-1	To 5 characters	Type of place of business of the reporting entity: MPDHU – pharmaceutical wholesale holding the ID in the Register of Pharmaceutical Wholesales. MPDAP – pharmacy holding the ID in the Register of Pharmacies. MPDPL – healthcare institution of the healthcare entity holding the ID (14-digit REGON) in the Register of Healthcare Entities in the Healthcare Entities resources.
IdentyfikatorPodmiotuRaportujacegoMT				ID of the reporting entity.
	idBiznesowy	1	Character string	Business ID of the place of business of the reporting entity – from the domain specified in the element rodzajPodmiotuRaportujacego: if rodzajPodmiotuRaportujacego == 'PO', tax identification number (NIP), VATIN or tax identification number in the state, in which the entity is registered, preceded by the symbol of the country compliant with 2-character ISO_3166-1 code entered at the stage of entity's registration.

Type	Simple element	Multiplicity	Format	Description
				<p>if rodzajPodmiotuRaportujacego from the {'PA', 'PF'} set and initially {PW} , ID is 12-digit number of the register book from the Register of Healthcare Entities.</p> <p>if rodzajPodmiotuRaportujacego from the {'HU', 'AP'} set, ID is (9-digit) REGON entered at the stage of entity's registration. In the case of applications for creating an account (rodzajWniosku=='KONTO') idBiznesowy is established when the application obtains the status=='ZAAKCEPTOWANY' (APPROVED) (for lower statuses idBiznesowy is not established).</p> <p>White characters are not accepted in this element.</p>
	rodzajPodmiotuRaportujacego	1	To 2 characters	Type of reporting entity. Values according to the glossary of types of entities reporting the trade in monitored products: PO, HU, AP, PA, PF, PW (Chapter 2. Glossary of terms)

### 5.1.1. Trade and stock message

\* note: in exceptional cases it is a complex type element, in such cases a description of the type can be found in chapter 5.1

Hierarchy level	Complex Element	Simple Element	Multiplicity	Format / Type	Description
0	komunikatOS				Trade and stock message.
		dataKomunikatu	0-1	Data	The marker declaring the date of the message is the declaration of the reporter, for which day the specific message is sent.
		idPodmiotuRaportujacego	1	IdentyfikatorPodmiotuRaportujacegoMT	ID of the reporting entity. According to chapter 5.1 Description of helper types/class.
		idMPDPodmiotuRaportujacego	0-1	IdentyfikatorMPDPodmiotuMT	ID of place of business of the reporting entity. It does not exist in the case of reporting entity == PO. According to chapter 5.1 Description of helper types/class.
		idKomunikatPierwotny	0-1	IdentyfikatorKomunikatuMT	ID of the message to which the actual message refers. The element applies to the situation where the current message withdraws and replaces the previous message. According to

Hierarchy level	Complex Element	Simple Element	Multiplicity	Format / Type	Description
					chapter 5.1 Description of helper types/class.
1	komunikatTransakcja		1-n	Organized chronologically by dataCzasTransakcji	Trade and stock transaction.
		lp	1	Number (7,0)	Ordinal number of transaction in the message. The maximum value of 2 million. The numbers must be unique.
		dataCzasTransakcji	1	Date + time	Date and time of transaction – with accuracy to milliseconds (It is recommended that subsequent transactions in the message differ in the time of the transaction so that the time determines the order of transactions). The date cannot refer to the future.
		rodzajTransakcji	1	To 3 characters	Type of trade and stock transaction. Values according to the dictionary of trade and stock transaction types (Chapter 2. Glossary of terms).
		rodzajPodmDrugaStrona	0-1	To 3 characters	Type of entity, with which the transaction of trade in medicinal products is made. The Glossary of types of entities with which the transaction of trade in medicinal products is made (Chapter 2. Glossary of terms): Not applicable for transactions, in which entering the other party (table: Types of transactions in the trade and stock message in the „Glossary of terms” chapter 2) is not required.
		idBiznesowyPodmDrugaStrona	0-1	Character string	ID of the entity, with which the transaction is made. The following values are expected: For the entities registered in Poland (i.e. of Polish HU, AP, PW, PR, FP type) – 9-digit REGON (National Official Register of Business Entities No.) or NIP (Tax Identification Number). For marketing authorisation holder (i.e. of PO type) – VAT ID (NIP) or VATIN.

Hierarchy level	Complex Element	Simple Element	Multiplicity	Format / Type	Description
					For entities other than domestic undertaking (i.e. of FZH, FZO, FZI type), tax identification number in the state of its registration. In the case of lack of such number, any other ID (i.e. ID from the local files of the contractor in the IT system of the reporting entity). For natural person (i.e. of OF type) – not entered. White characters are not accepted in this element.
		krajPodmDrugaStrona	0-1	To 2 characters	State of entity, with which the transaction is made – country code compliant with <a href="https://stat.gov.pl/badania-statystyczne/sprawozdawczosc/intrastat/alfabetyczny-wykaz-krajow/">https://stat.gov.pl/badania-statystyczne/sprawozdawczosc/intrastat/alfabetyczny-wykaz-krajow/</a> . Required for foreign undertakings (rodzajPodmDrugaStrona: FZH, FZO, FZI).
		nazwaPodmDrugaStrona	0-1	Character string	Name of entity, with which the transaction is made: . is not (does not need to be) entered for the entities running wholesales, pharmacies, healthcare entities (i.e. of HU, AP, PW type) – name of the entity will be acquired from a register in the ZSMOPL applicable for the type of entity at the message validation stage. must be entered in the case of marketing authorisation holder (PO), Polish entities other than entities carrying out medical activities, pharmacies, wholesalers, and for foreign enterprises (FZH, FZO, FZI). Not applicable to natural person (rodzajPodmDrugaStrona==OF).
		adresPodmDrugaStrona	0-1	Character string	Address of entity, with which the transaction is made: is not (does not need to be) entered for the entities running wholesales, pharmacies, healthcare entities (i.e. of HU, AP, PW type) – address data of the entity will be acquired from a register in the ZSMOPL applicable for the type of entity at the message validation stage. must be entered in the case of marketing authorisation holder (PO),

Hierarchy level	Complex Element	Simple Element	Multiplicity	Format / Type	Description
					Polish entities other than entities carrying out medical activities, pharmacies, wholesalers, and for foreign enterprises (FZH, FZO, FZI). Not applicable to natural person (rodzajPodmDrugaStrona==OF).
		idMPDPodmDrugaStrona	0-1	IdentyfikatorMPDPodmiotuDrugaStronaMT	ID of the place of business of the entity, with which the transaction is made. According to chapter 5.1 Description of helper types/class.
		nrDokSprzZakRefDokMag	0-n	Character string	Number of sales/purchase document relevant to the warehouse document – number required for documents of warehouse document types, only for the following (rodzajTransakcji): PKU, WPR. For PKU transaction, this should be the number of the external sales invoice – number of document assigned by the invoice issuer (from which the goods are purchased). For WPR document, this should be the number of own (in-house) sales invoice. Due to the relation between the warehouse receipt/release document and purchase/sales document of „one to one” type e.g. one warehouse receipt document can apply to several purchase documents, the element is a list of values (multiplicity: 0-n).
		czyTransakcjaJestKorekta	1	Number (1,0)	Specifies, whether the document is a correction: 1 – document is a correction 0 – document is not a correction.
		dataDokKorygowanego	0-1	Date + time	Date and time of corrected document – with accuracy to milliseconds – required only, when the transaction is a correction (if czyTransakcjaJestKorekta==1). The date cannot refer to the future. The date of the corrected document must be prior than the date of the correction document (given in the element <dataCzasTransakcji>).
		nrDokKorygowanego	0-1	Character string	Number of corrected document – required only, when the transaction is

Hierarchy level	Complex Element	Simple Element	Multiplicity	Format / Type	Description
					a correction (if czyTransakcjaJestKorekta==1).
		przyczynaRoznicyInwentaryzacyjnej	0-1	Character string	Reason of stock difference – description field required, when the transaction is Stock difference i.e. rodzajTransakcji: IR+, IR-, INW.
		rodzajDokZrodlsprz	0-1	To 2 characters	Element not required, maintained only for compatibility with the previous version of the system.
		nrDokZrodln	1	Character string	Number of source transaction document – number of invoice or warehouse document, receipt, number of any other document assigned by the reporting entity. In the case of STN transactions, this field should be filled in with the value ND (not applicable)
		nrDokZewnetrznego	0-1	Character string	Number of external document (number of document assigned by the issuer) – required for revenue transactions (ZKU).
		nrERecepty	0	Character string	Element not required, maintained only for compatibility with the previous version of the system.
		podstawaWydaniaLeku	0-1	To 2 characters	Dictionary Basics of drug release: RP – prescription, ZA – requisition, ZL – order, ND – not applicable.
2	komunikatTransakcjaOSPOz		1-n	Ordered by lp	Transactions and trade positions. Class of item of document being the trade and stock transaction. One object KomunikatTransakcja is correlated to – one or more items (corresponding to the items from the source transaction document).
		lp	1	Number (8,0)	Ordinal number of the document item. It is recommended that document positions be ordered by the lp element. The numbers must be unique.



Hierarchy level	Complex Element	Simple Element	Multiplicity	Format / Type	Description
		nrPozycjiDokZrodl	1	Number (8,0)	Number of item according to the order from the source document, corresponding to the ordinal number of the item in the source document. Ordinal numbers are not supposed to be continuous, due to the fact that not all items in the source document need to be monitored.
		czyProduktWydanyZRefundacja	0	Number (1,0)	Element not required, maintained only for compatibility with the previous version of the system.
		czyDotImportuDocelInterw	1	Number (1,0)	Marker specifying, whether the transaction item applies to direct or intervention import: 0 – does not apply to direct or intervention import 1 – applies to to direct or intervention import.
		numerZgodyPrezesa	0-1	Character string	The approval number of the President of the URPL - it is filled in for medicines that have been exempted from the obligation to include certain detailed information in Polish on the packaging and in the package leaflet. The number appears in the form of a character string according to a designated scheme:  UR/Z/legal basis of the approval/sequential number/two-digit year - for example: UR/Z/4c/1/22.
		kodEAN	0-1	Character string	Medicinal product code 14 characters (EAN, GTIN) - completed if the transaction does not concern the target or intervention import. At the stage of accepting messages, all EAN codes are converted to 14-characters if they are shorter. White characters are not accepted in this element.
		nrZapotrzImportuDocelInterw	0-1	Character string	Number of requisition for drugs from direct or intervention import – filled in when the transaction applies to direct or intervention import (if czyDotImportuDocelInterw==1). Exemplary number formats are entered below:

Hierarchy level	Complex Element	Simple Element	Multiplicity	Format / Type	Description
					<p>MZ/NNNNN/RR – for requisition</p> <p>D/NNNNN/RR – for dietary food</p> <p>DOP/NNNNN/RR – for consents issued in the Pharmaceutical Law Act, Article 4(8)</p> <p>Zgoda/NNNNN/RR – for decisions issued in the Pharmaceutical Law Act, Article 4(9) where NNNNN means 5-digit subsequent number and RR means two last digits of the year – for decisions issued to the end of the year 2020</p> <p>ZGODA/NNNNN/RR – for decisions issued in the Pharmaceutical Law Act, Article 4(9) where NNNNN means 5-digit subsequent number and RR means two last digits of the year - for decisions issued since the beginning of the year 2021</p> <p>White characters are not accepted in this element.</p>
		seria	0-1	Character string	<p>Batch of medicinal product. Required value for all transactions except for IR-; INW, if this transaction sets all 4 stocks to 0: &lt;stanIloscDostepnySeria&gt;, &lt;stanIloscWstrzWycofSeria&gt;, &lt;stanIloscDostepny&gt;, &lt;stanIloscWstrzWycof&gt;, This means that if at least one of the above states is different from zero 0 then the &lt;seria&gt; element is required. Value required also for target and intervention import.</p>
		dataWaznosciSerii	0-1	Date	<p>The expiry date of the medicinal product series. Required value for all transactions, except STN, IR-; INW, in the case when this transaction sets all 4 inventory levels to 0: &lt;stanIloscDostepnySeria&gt;, &lt;stanIloscWstrzWycofSeria&gt;, &lt;stanIloscDostepny&gt;, &lt;stanIloscWstrzWycof&gt;.</p>

Hierarchy level	Complex Element	Simple Element	Multiplicity	Format / Type	Description
					<p>This means that if at least one of the above states is different from zero 0 then the &lt;dataWaznoscSerii&gt; element is required.</p> <p>Value required also for target and intervention import.</p> <p>The expiry date of a series cannot be prior to 01.01.2000 and cannot exceed 10 years from the transaction date for the series.</p>
		ilosc	0-1	Number (18,5)	<p>Quantity of medicinal product – should be entered, when the transaction is not a correction (czyTransakcjaJestKorekta==0). Expected value greater than 0, not applicable for IBO, IR+, IR-, INW, for which you can indicate 0. For STN transactions, this item is not required</p> <p>Due to possible sales in the quantity being not an integer, e.g. sales of a single blister from packaging, the accuracy of numeric field was set for 5 decimal places.</p>
		wartosc	0-1	Number (18,5)	<p>Net value of sold unit packages of a medicinal product – without consideration of discounts, rebates and allowances. It should be entered, when the transaction is not a correction (czyTransakcjaJestKorekta==0). Required for transactions == SPR. Expected value greater than or equal to 0. Value == 0 means donation.</p>
		iloscPrzedKorekta	0-1	Number (18,5)	<p>Quantity of sold packages of medicinal product before correction – should be entered, when the transaction is a correction (czyTransakcjaJestKorekta==1). Expected value greater than or equal to 0.</p>
		iloscPoKorekcie	0-1	Number (18,5)	<p>Quantity of medicinal product after correction – should be entered, when the transaction is a correction (czyTransakcjaJestKorekta==1). The expected value greater or equal to 0.</p>

Hierarchy level	Complex Element	Simple Element	Multiplicity	Format / Type	Description
		wartoscPrzedKorekta	0-1	Number (18,5)	Net value of medicinal product - without consideration of discounts, rebates and allowances. It should be entered, when the transaction is a correction (czyTransakcjaJestKorekta==1). Expected value greater than or equal to 0. Required for transactions == SPR..
		wartoscPoKorekcie	0-1	Number (18,5)	Net value of sold packages of medicinal product - without consideration of discounts, rebates and allowances. It should be entered, when the transaction is a correction (czyTransakcjaJestKorekta==1). Expected value greater than or equal to 0. Required for transactions == SPR.
		przyczynaKorekty	0-1	Character string	Reason for correction – description field. Information required, when the transaction is a correction (czyTransakcjaJestKorekta==1).
3	komunikatTransakcjaOSPoz ZapMT		0-1		Positions of trade and stocks transactions for target and intervention imports. Summary of product characteristics for medicinal products from direct and intervention import – the object should exist, when the transaction item concerns direct or intervention import. i.e. komunikatTransakcjaOSPoz.czyDotImp ortuDocelInterw==1). Summary of product characteristics consists in the following fields: commercial code (EAN or equivalent), commercial name, international name, pharmaceutical form, dose, packaging size, name of marketing authorisation holder (MAH) , country of origin.
		kodEAN	1	Character string	The foreign medicinal product code. EAN code or equivalent. Not verified. In the absence of a code, enter "none". White characters are not accepted in this element.

Hierarchy level	Complex Element	Simple Element	Multiplicity	Format / Type	Description
		nazwaHandlowa	1	Character string	Commercial name.
		nazwaMiedzynarodowa	1	Character string	International name.
		Postac	1	Character string	Form.
		Dawka	1	Character string	Dose.
		wielkoscOpakowania	1	Character string	Packaging size.
		Producent	1	Character string	Name of marketing authorisation holder (MAH).
		krajPochodzenia	1	Character string	Country of origin of medicinal product – country code compliant with <a href="https://stat.gov.pl/badania-statystyczne/sprawozdawczosc/intrastat/alfabetyczny-wykaz-krajow/">https://stat.gov.pl/badania-statystyczne/sprawozdawczosc/intrastat/alfabetyczny-wykaz-krajow/</a> .
4	komunikatTransakcjaOSPOzStanMT		0-1		Revenue and stock transaction - information on stock. Stock information – the object should exist, if the transaction (komunikatTransakcja.rodzajTransakcji) is STN, or is in one of the following types: PKU, WPR, WZR, PZR, MWG, WWG, PWY, PM+, WM-, PZO, WUT, WUI, WRO, WRW, MWO, MDO, IBO, IR+, IR- and the STN transaction was not sent in the message.
		stanIloscDostepnySeria	1	Number (18,5)	Quantity of medicinal product in stock in the warehouse of the place of business (after transaction) - stock available for trade for medicinal product batch. Authorised limit for HU and PO not more than 200 000. Authorised limit for AP not more than 10 000.
		stanWartoscDostepnySeria	0	Number (18,5)	Element not required, maintained only for compatibility with the previous version of the system.
		stanIloscWstrzWycofSeria	1	Number (18,5)	Quantity of medicinal product in stock in the warehouse of the place of business (after transaction) - stock suspended or recalled for trade for medicinal product batch. Authorised limit for HU and PO not more than 200 000.

Hierarchy level	Complex Element	Simple Element	Multiplicity	Format / Type	Description
					Authorised limit for AP not more than 10 000.
		stanWartoscWstrzWycofSeria	0	Number (18,5)	Element not required, maintained only for compatibility with the previous version of the system.
		stanIloscDostepny	1	Number (18,5)	Quantity of medicinal product in stock in the warehouse of the place of business (after transaction) - stock available for trade for all batches of medicinal product in total.
		stanWartoscDostepny	0	Number (18,5)	Element not required, maintained only for compatibility with the previous version of the system.
		stanIloscWstrzWycof	1	Number (18,5)	Quantity of medicinal product in stock in the warehouse of the place of business (after transaction) - stock suspended or recalled for trade for all batches of medicinal product in total.
		stanWartoscWstrzWycof	0	Number (18,5)	Element not required, maintained only for compatibility with the previous version of the system.

### 5.1.2. Shortage report message

Hierarchy level	Element	Attribute	Multiplicity	Format / Type	Description
0	komunikatZB				Shortage report message.
		idPodmiotuRaportujacego	1	IdentyfikatorPodmiotuRaportujacegoMT	ID of the reporting entity. According to chapter 5.1 Description of helper types/class.
		idMPDPodmiotuRaportujacego	1	IdentyfikatorMPDPodmiotuMT	ID of place of business of the reporting entity. According to chapter 5.1 Description of helper types/class.
		idKomunikatPierwotny	0-1	IdentyfikatorKomunikatuMT	ID of the message to which the actual message refers. The element applies to the situation, in which the actual message is a corrected or a new version of the previously sent message. According to chapter 5.1 Description of helper types/class.
1	komunikatTransakcja		1-n	Ordered by dataCzasTransakcji	Transaction of report of shortage of medicinal product.
		lp	1	Number (8,0)	Ordinal number of transaction in the message. The numbers must be unique.
		dataCzasTransakcji	1	Date + time	Date and time of transaction (shortage reports) - with accuracy to milliseconds (subsequent transactions in the message should have different transaction time to make the time the indicator of transactions' order).
		liczbaBraku	1	Number (8,0)	Number of packaging of medicinal product reported as missing (of shortage).
		przyczynaBraku	0-1	Character string	Cause of the product lack.
		kodEAN	1	Character string	EAN code of medicinal product. White characters are not accepted in this element.

### 5.1.3. Delivery planning message

\* note: in exceptional cases it is a complex type element, in such cases a description of the type can be found in chapter 5.1

Hierarchy level	Complex Element	Simple Element	Multiplicity	Format / Type	Description
0	komunikatPD				Delivery planning message.
		idPodmiotuRaportujacego	1	IdentyfikatorPodmiotuRaportujacegoMT	ID of the reporting entity.
		idKomunikatPierwotny	0-1	IdentyfikatorKomunikatuMT	ID of the message to which the actual message refers. The element applies to the situation, in which the actual message is a corrected or a new version of the previously sent message.
1	komunikatTransakcja		1-n	Ordered by dataCzasTransakcji	Transaction of planning the deliveries of medicinal product.
		lp	1	Number (8,0)	Ordinal number of transaction in the message. The numbers must be unique.
		dataCzasTransakcji	1	Date + time	Date and time of transaction (plan reporting) - with accuracy to milliseconds (subsequent transactions in the message should have different transaction time to make the time the indicator of transactions' order).
		kodEAN	1	Character string	EAN code of medicinal product to which the delivery planning transaction applies. White characters are not accepted in this element.
		rodzajTransakcji	1	To 2 characters	Type of delivery planning transaction:: PL – delivery plan, WS – suspension of deliveries, WZ – resumption of deliveries, ZA – end of deliveries. Reporting WS, WZ and ZA transactions is currently not required and should not be sent.
		dataPoczatkowa	1	Date	Starting date of the period to which the planning process applies.



Hierarchy level	Complex Element	Simple Element	Multiplicity	Format / Type	Description
					<p>At the message validation stage, it is checked whether the condition of entering of the future date in relation to the date of reporting the plan (later or equal to the Data(dataCzasTransakcji)) is met. It is recommended that the date: dataPoczątkowa is the next day after the date: dataCzasTransakcji.</p> <p>When the transaction type is the "delivery plan" (rodzajTransakcji==PL) the date specifies the beginning of the period, to which the detailed plan entered in the komunikatTransakcjaPDPlan refers.</p> <p>When the transaction type is the "suspension of deliveries" (rodzajTransakcji==WS), the date specifies the moment of suspension of deliveries.</p> <p>When the transaction type is the "resumption of deliveries" (rodzajTransakcji==WZ), the date specifies the moment of resumption of deliveries.</p> <p>When the transaction type is the "end of deliveries" (rodzajTransakcji==ZA) the date specifies the moment of ending of deliveries.</p>
		dataKoncowa	0-1	Date	<p>End date – end date of the period, to which the planning process applies:</p> <p>When the transaction type is the "delivery plan" (rodzajTransakcji==PL), the date is required. Delivery plans are required for periods of at least 3 months, the end date should meet the condition "&gt;= start date + 3 months".</p> <p>When the transaction type is the "suspension of deliveries" (rodzajTransakcji==WS), the end date is optional, in this case it is the „date of expected resumption”.</p> <p>When the transaction type is the "resumption of deliveries" (rodzajTransakcji==WZ), the end date is not required.</p> <p>When the transaction type is the "end of deliveries" (rodzajTransakcji==ZA), the end date is not required.</p>

Hierarchy level	Complex Element	Simple Element	Multiplicity	Format / Type	Description
		uzasadnWstrzymZakoncz	0-1	Character string	Element not required, maintained only for compatibility with the previous version of the system.
2	komunikatTransakcjaPDPlan		0-1	Ordered by year, month	The medicinal products planning delivery transaction - detailed data Contains detailed data of delivery plan in the delivery planning message. Applies to the transactions, for which komunikatTransakcja.rodzajTransakcji== PL (delivery plan). Objects ordered by criterion {year, week}.
		wielkosc	1	Number (8,0)	Delivery volume – planned number of unit packaging of medicinal product in delivery.
		rok	1	Number (4,0)	Year of planned delivery. Entered year and number of week in the year should fall within the period specified by the starting and end date (komunikatTransakcja.dataPoczątkowa and dataKońcowa).
		miesiac	1	Number (2,0)	Number of month in the year of planned delivery. The month number is a two-digit number of the month from 01 to 12, with the leading . (komunikatTransakcja.dataPoczątkowa and dataKońcowa).
		miejsceDostawy	0-1	komunikatTransakcjaPDPlanMiejsceDostawy	Place of planned delivery
3	komunikatTransakcjaPDPlanMiejsceDostawy				Place of planned delivery in Planned delivery
		rodzajMiejscaDostawy	1	2 znaki	Type of planned delivery. Acceptable values: <ul style="list-style-type: none"> <li>• HU</li> <li>• AP</li> <li>• PL</li> </ul>
		idMiejscaDostawy	1	Ciąg znaków	<ul style="list-style-type: none"> <li>• 'MPDHU' = ID from the Register of Wholesales.</li> <li>• 'MPDAP' = ID from the Register of Pharmacies.</li> </ul>

Hierarchy level	Complex Element	Simple Element	Multiplicity	Format / Type	Description
					<ul style="list-style-type: none"> <li>'MPDPL' = ID of healthcare institution of the healthcare entity from the Register of Healthcare Entities – 9-digit REGON.</li> </ul>

### 5.1.4. Status check message

\* note: in exceptional cases it is a complex type element, in such cases a description of the type can be found in chapter 5.1

Level in Hierarchy	Complex Element	Simple Element	Multiplicity	Format/Type	Description
0	Message				Status Check Message
		identyfikatorKomuniaktu	1	Number (18,0)	System-generated Message ID when one of the messages is sent: Trades and stocks Deficiency reports Delivery planning

```
<soapenv:Envelope xmlns:soapenv="http://schemas.xmlsoap.org/soap/envelope/"
xmlns:stat="http://csioz.gov.pl/zsmopl/ws/statuskomunikatudmz/">
  <soapenv:Header/>
  <soapenv:Body>
    <stat:zapytajOStatusKomunikatu>
      <komunikat>
        <identyfikatorKomunikatu?></identyfikatorKomunikatu>
      </komunikat>
    </stat:zapytajOStatusKomunikatu>
  </soapenv:Body>
</soapenv:Envelope>
```

### 5.1.5. State check message

\* note: in exceptional cases it is a complex type element, in such cases a description of the type can be found in chapter 5.1

Level in Hierarchy	Complex Element	Simple Element	Multiplicity	Format/Type	Description
0	Komunikat				State Check Message
		idPodmiotuRaportujacego	1	IdentyfikatorPodmiotuRaportujacegoMT	Reporting entity identifier. According to the chapter 5.1 Description of helper types/class.
		idMPDPodmiotuRaportujacego	0-1	IdentyfikatorMPDPodmiotuMT	Reporting entity business location identifier. Does not exist for reporting agent == PO. According to the chapter 5.1 Description of helper types/class.

```
<soapenv:Envelope xmlns:soapenv="http://schemas.xmlsoap.org/soap/envelope/"
xmlns:stan="http://cez.gov.pl/zsmopl/ws/stanydmz/">
  <soapenv:Header/>
  <soapenv:Body>
    <stan:zapytajOStanyMagazynowe>
      <komunikat>
        <idPodmiotuRaportujacego>
          <idBiznesowy?</idBiznesowy>
          <rodzajPodmiotuRaportujacego?</rodzajPodmiotuRaportujacego>
        </idPodmiotuRaportujacego>
        <!--Optional:-->
        <idMPDPodmiotuRaportujacego>
          <idBiznesowy?</idBiznesowy>
          <rodzajMPDPodmiotuRaportujacego?</rodzajMPDPodmiotuRaportujacego>
        </idMPDPodmiotuRaportujacego>
      </komunikat>
    </stan:zapytajOStanyMagazynowe>
  </soapenv:Body>
</soapenv:Envelope>
```

## 6. Message validation rules

The “Messaging model” chapter presents the messaging model, whereas clause 3 of this chapter contains a conceptual description of the method of message validation. The general scheme is universal for all types of messages. There are however certain differences resulting from the structure of individual messages. The table below presents detailed validation schemes for the individual types of messages.

### Trade and stock message (OS)

Validation order		Rule domain code
1	Message header validation OS	KM
2	Verification of transaction data OS	TROS
3	Verification of position data within a transaction OS	TROSPDZ

### Shortage report message (ZB)

Validation order		Rule domain code
1	Message header validation ZB	KM
2	Verification of transaction data ZB	TRZB

### Delivery planning message (PD)

Validation order		Rule domain code
1	Message header validation PD	KM
2	Verification of transaction data PD	TRPD
3	Verification of position data within a transaction PD	TRPDPLAN

### 6.1. Message validation for compliance with template

During validation the message is checked for compliance with the scheme (XML Schema). If any non-compliance is identified, a reply with code 500 containing information on non-compliance with scheme is sent the IT system of the reporting entity. Such message is rejected in full and not recorded in the ZSMOPL (and therefore unavailable on website).

Exemplary errors causing reply with error 500 by the Web Service and discontinuation of further validation:

- Invalid symbol of transaction type.
- Invalid specification of the type of entity, with which the transaction is made.
- No date and time of transaction.
- Value of element, which should specify, whether the transaction is a correction, is not an integer.
- Value of marker, which specifies, whether the medicinal product was dispensed with reimbursement, is not an integer.
- Value of marker, which specifies, whether the transaction item concerns direct or intervention import, is not an integer.
- Invalid specification of the type of source document of sales transaction.
- Invalid specification of the basis for drug dispensing.
- Invalid type of delivery planning transaction.
- Incomplete number of product shortage.
- Negative values / quantities are given.
- White marks have been given.

Exemplary Web Service replies to such errors:

- `<faultstring>Unmarshalling Error: cvc-enumeration-valid: Value 'AAA' is not facet-valid with respect to enumeration '[ZKU, SPR, PKU, WPR, WZR, PZR, MWG, WWG, PWY, PM+, WM-, PZO, WUT, WUI, WRO, WRW, MWO, MDO, IBO, IR+, IR-]'. It must be a value from the enumeration.</faultstring>`
- `<faultstring>Unmarshalling Error: cvc-enumeration-valid: Value 'AAA' is not facet-valid with respect to enumeration '[PO, HU, AP, PA, PF, PW]'. It must be a value from the enumeration. .</faultstring>`
- `<faultstring>Unmarshalling Error: Not a number: A</faultstring>`
- `<faultstring>Unmarshalling Error: cvc-datatype-valid.1.2.1: '2018-02-26' is not a valid value for 'dateTime'.</faultstring>`

If at this stage validation is negative, it is recommended to check the message to be sent for compliance with the scheme.

If validation is positive (validation for compliance with XML Schema), the message has the assigned ID and is saved in ZSMOPL (awaiting validation described in chapter 3, clause 3).

## 6.2. Message header validation

Rule domain code	Verification status	Description of error or warning
KM1	Error	The message was signed with a certificate not registered in ZSMOPL.
KM2	Error	There was a mismatch between the elements: reporting entity identifier, type of reporting entity, identifier of the reporting entity's place of business, type of reporting entity's place of business.
KM3	Error	The original message with the identifier indicated was not found or belongs to another reporting entity.
KM4	Error	Message is a duplicate.
KM5	Error	The message sent contains duplicates in the transaction numbering.
KM6	Error	Future date of the message.
KM7	Error	The deadline of 7 days for correcting the message has been exceeded.
KM8	Warning	The original message has incorrect status or withdrawn.
KM9	Error	The STN transaction must be the last transaction in the message and can only occur once

### 6.3. Validation of transactions in the trade and stock message

Rule domain code	Verification status	Description of error or warning	Message element / Other comments
TROS2	Warning	The given REGON of the medicinal entity was not found in the register of entities performing medicinal activity.	<idBiznesowyPodmDrugaStrona>
TROS4	Error	The given REGON number has an incorrect construction.	In the case of the reporting entity AP, HU - REGON 9 digits (leading zero note) in the <idPodmiotuRaportujacego>  In the case of an entity with which the transaction is concluded and registered in Poland (ie HU, AP, PW, PR, FP) - REGON 9 digit in the element <idBiznesowyPodmDrugaStrona>
TROS6	Error	The tax identification number of the entity with which the transaction is concluded is not provided.	<idBiznesowyPodmDrugaStrona>  in case of:  Responsible entity (ie in the type of OP) - NIP  Entities other than a domestic entrepreneur (ie in the type of FZH, FZO, FZI) tax identification number in the country in which the entity is registered
TROS7	Error	Invalid or missing code of state of a foreign company.	<krajPodmDrugaStron>  in case of FZH, FZO, FZI.
TROS9	Error	The name of the entity with whom the transaction is concluded is not provided.	<nazwaPodmDrugaStrona>  It does not apply to contractors of the AP, HU, PW type
TROS11	Error	Entity's address has not been provided, with whom the transaction is concluded.	<adresPodmDrugaStrona>  It does not apply to contractors of the AP, HU, PW type
TROS12	Error	The given pharmacy ID with which the transaction is concluded was not found in the Pharmacy Registry.	<idMPDPodmDrugaStrona>  when the type of MPD is MPDAP



Rule domain code	Verification status	Description of error or warning	Message element / Other comments
TROS13	Error	Entered ID of the place of business of the entity, with which the transaction is made, is not found in the Register of Pharmaceutical Wholesales.	<idMPDPodmDrugaStrona> when the type of MPD is MPDHU
TROS14	Warning	The given REGON (14 characters) of the medical institution with which the transaction is concluded has not been found in the Register of Entities Performing Medicinal Activity.	<idMPDPodmDrugaStrona> when the type of MPD is MPDPL
TROS17	Error	No purchase document number corresponding to the warehouse receipt document is entered.	<nrDokSprzZakRefDokMag>
TROS18	Error	No sales document number corresponding to the warehouse release document is entered.	<nrDokSprzZakRefDokMag>
TROS19	Error	Invalid value of element that should specify, whether the transaction is a correction.	<czyTransakcjaJestKorekta>
TROS20	Error	No date of corrected transaction.	<dataDokKorygowanego>
TROS21	Error	No number of corrected document.	<nrDokKorygowanego>
TROS22	Error	No reason of inventory difference specified.	<przyczynaRoznicyInwentaryzacyjnej>
TROS26	Error	No number of external document (number of document assigned by the issuer).	<nrDokZewnetrznego> if category purchase
TROS29	Error	Invalid specification of the basis for drug dispensing for the entered type of transaction and type of entity, with which the transaction is made.	<podstawaWydaniaLek>
TROS45	Error	The type of business location of the entity with which the transaction is concluded is not given.	<rodzajMPDPodmiotuRaportujacego DrugaStrona> in case of AP, HU or PW
TROS46	Error	No information was provided about the type of entity with which the transaction is concluded.	<rodzajPodmDrugaStrona>

Rule domain code	Verification status	Description of error or warning	Message element / Other comments
TROS47	Error	The business location identifier of the entity with which the transaction is concluded is not provided.	<idMPDPodmDrugaStrona>
TROS48	Error	The given transaction date refers to the future.	<dataCzasTransakcji>
TROS49	Error	The correction date must be later than the corrected transaction date.	<dataDokKorygowanego>
TROS50	Error	The transaction date does not match the message date.	<dataCzasTransakcji>; <dataKomunikatu>
TROS51	Error	The adjusted transaction date cannot be a future date.	<dataDokKorygowanego>
TROS52	Error	The transaction date refers to the period before reporting to ZSMOPL.	<dataCzasTransakcji> is earlier than 01/04/2019
TROS53	Error	The message sent contains duplicates in item numbering.	<lp> in <komunikatTransakcjaOSPoz>
TROS54	Error	The given NIP (tax identification number) has an incorrect construction.	<idBiznesowyPodmDrugaStrona> in case of PO
TROS55	Warning	The reporting person and the contractor are the same entity.	<idBiznesowyPodmDrugaStrona> <idBiznesowyRaportujacego>
TROS56	Warning	The pharmacy indicated in the transaction as the counterparty currently does not have the status 'active' in the Register of Pharmacies	<rodzajPodmDrugaStrona> = AP <idBiznesowyPodmDrugaStrona> Status other than 'active' or 'waiting'
TROS57	Warning	The wholesaler indicated in the transaction as the counterparty currently does not have the status 'active' in the Register of Pharmaceutical Wholesalers	<rodzajPodmDrugaStrona> = HU <idBiznesowyPodmDrugaStrona> Status other than 'active' or 'waiting'

Rule domain code	Verification status	Description of error or warning	Message element / Other comments
TROS58	Warning	The batch release can only be reported by the MAH.	<rodzajPodmiotuRaportujacego> other than PO
TROS59	Warning	The source document number was not specified.	<NrDokZrodl>  This rule will be called for any non-STN transaction. The rule will check if the nrDokZrodl field is defined for the transaction and if it is not empty
TROS60	Warning	The healthcare facility indicated in the transaction as the entity of the other party currently in the Register of Entities Performing Medicinal Activities does not have the status of "Active".	<idBiznesowy>  <idMPDPodmDrugaStrona>
TROS61	Error	Personal data is provided in the data of the other party.	<nazwaPodmDrugaStrona>
TROSP0Z32	Warning	The EAN code provided was not found in the monitored products registry.	<kodEAN> in <komunikatTransakcjaOSPoz>
TROSP0Z34	Error	Entered number of requisition for drugs from direct or intervention import is not found in the register of requisitions.	<nrZapotrzImportuDocellInterw>
TROSP0Z36	Error	One or more information fields consisting in summary of product characteristics for medicinal product from direct or intervention import is empty.	<komunikatTransakcjaOSPozZapMT>  including: <kodEAN> <nazwaHandlowa> <nazwaMiedzynarodowa> <postac> <dawka> <>wielkoscOpakowania> <producent> <krajPochodzenia>
TROSP0Z37	Error	An incorrect amount of product has been entered.	<ilosc>

Rule domain code	Verification status	Description of error or warning	Message element / Other comments
TROSP0Z38	Error	An incorrect net value of the product that is required for the sale is provided.	<wartosc>
TROSP0Z39	Error	An incorrect amount of product was given before correction, which is required in case of correction.	<iloscPrzedKorekta>
TROSP0Z40	Error	An incorrect amount of product has been provided after correction, which is required in case of correction.	<iloscPoKorekcie>
TROSP0Z41	Error	An incorrect net value of the product was given before the correction, which is required in the case of sales adjustment.	<wartoscPrzedKorekta>
TROSP0Z42	Error	An incorrect net value of the product has been given after correction, which is required in the case of sales adjustment.	<wartoscPoKorekcie>
TROSP0Z43	Error	No reason for correction required, when the transaction is a correction, is entered.	<przyczynaKorekty>
TROSP0Z44	Error	No inventory information was provided that is required for the type of transaction provided.	<komunikatTransakcjaOSPozStanMT> including: <stanIlocDostepnySeria> <stanIlocWstrzWycofSeria> <stanIlocDostepny> <stanIlocWstrzWycof>  The error is not reported for transactions that require states if there is an STN transaction in the message.  The error is reported if there is an STN transaction in the message and the states are not included in it.
TROSP0Z70	Error	The provided EAN code is incorrect.	<kodEAN> in <komunikatTransakcjaOSPoz>
TROSP0Z71	Error	No batch number is given.	<seria>

Rule domain code	Verification status	Description of error or warning	Message element / Other comments
TROSP0Z75	Error	No batch expiry date has been provided.	<dataWaznosciSerii>
TROSP0Z76	Error	The available state of the series must not be greater than the available state of the product.	<stanIloscDostepnySeria> is greater than<stanIloscDostepny>
TROSP0Z77	Error	Series paused state can not be greater than the state of paused product.	<stanIloscWstrzWycofSeria> is greater than <stanIloscWstrzWycof>
TROSP0Z78	Error	Incorrect expiry date of the series is given.	<dataWaznosciSerii> is prior to 01.01.2000 or exceeds 10 years from the transaction date for the series
TROSP0Z79	Warning	The number of demand is older than 2 years.	<nrZapotrzImportuDocellInterw>
TROSP0Z80	Warning	The state of the product series exceeding the permitted limit is given.	<stanIloscDostepnySeria> <stanIloscWstrzWycofSeria> Authorised limit for HU and PO not more than 200 000. Authorised limit for AP not more than 10 000.
TROSP0Z81	Warning	The expiry date of the authorization is more than 3 years.	Based on the data contained in the Register of Medicinal Products.
TROSP0Z82	Warning	The GTIN code given belongs to the veterinary not reporting to the ZSMOPL.	Based on the data contained in the Register of Medicinal Products.
TROSP0Z83	Error	Information on stock levels in the STN transaction was not provided	In the STN transaction, no transaction items were specified for <seria> in previous transactions. The content of the error message indicates the transaction, position, GTIN code and series that were indicated in the message and were not indicated in the STN
TROSP0Z84	Warning	The transaction item contains information about the stock levels, which was not required when using the STN transaction	If there is an STN transaction in the message, the element <komunikatTransakcjaOSPozStanMT> should not be used for the remaining transactions

Rule domain code	Verification status	Description of error or warning	Message element / Other comments
TROSP0Z85	Warning	The inventory levels of a product series that are not included in any transaction have been provided	In the STN transaction items there was an item <seria> that did not occur in any previous transaction
TROSP0Z86	Warning	The approval number of the president of the URPL was not found in the registry of monitored products	<numerZgodyPrezesa> in <komunikatTransakcjaOSPoz>



## 6.4. Transaction validation in the shortage report message

Rule domain code	Verification status	Description of error or warning	Message element / Other comments
TRZB1	Warning	The EAN code provided was not found in the monitored products registry.	<kodEAN> in <komunikatTransakcja>
TRZB2	Error	The number of no product has been given with a value less than or equal to zero.	<liczbaBraku>
TRZB3	Error	The provided EAN code is incorrect.	<kodEAN> in <komunikatTransakcja>
TRZB4	Error	The transaction date is for the future.	<dataCzasTransakcji>
TRZB5	Error	The transaction date refers to the period before reporting to ZSMOPL.	<dataCzasTransakcji> is earlier than 01/04/2019
TRZB6	Error	Failure date earlier than 7 days.	<dataCzasTransakcji>
TRZB7	Warning	OTC products are not subject to shortage reporting	<kodEAN> in <komunikatTransakcja>
TRZB8	Warning	<p>The shortage report quantity limit for the product has been exceeded</p> <p>The alert is reported for each GTIN for which the sum of the quantity of the reported shortage under all transactions related to a given GTIN in a given ZB message exceeds the limit:</p> <ul style="list-style-type: none"> <li>• 100 items for general pharmacies</li> <li>• 1000 items for hospital pharmacies</li> </ul>	<kodEAN> in <komunikatTransakcja>

## 6.5. Transaction validation in the delivery planning message

Rule domain code	Verification status	Description of error or warning	Message element / Other comments
TRPD1	Warning	The EAN code provided was not found in the monitored products registry.	<kodEAN> in <komunikatTransakcja>
TRPD2	Error	The provided EAN code is incorrect.	<kodEAN> in <komunikatTransakcja>
TRPD3	Error	Entered starting date of planning is earlier than the reporting date.	<dataPoczatkowa> earlier than <dataCzasTransakcji>
TRPD4	Error	Entered end date is earlier than the starting date.	<dataKoncowa> earlier than <dataPoczatkowa>
TRPD8	Error	No plan items in the "delivery plan" transaction (PL) are specified.	<rok> <miesiac> <>wielkosc>
TRPD12	Error	The transaction date is for the future.	<dataCzasTransakcji>
TRPD13	Error	The transaction date refers to the period before reporting to ZSMOPL.	<dataCzasTransakcji> is earlier than 01/04/2019
TRPD14	Błąd	You can plan the delivery plan until December 31 of the next year	<rok>
TRPDPLAN9	Error	Entered volume of delivery in the plan item is lesser than zero.	<wielkosc>
TRPDPLAN10	Error	The value of the year and the number of the month in the year under the heading of the supply plan does not fall within the period determined by the start and end date of the supply plan.	<rok> <miesiac>



Rule domain code	Verification status	Description of error or warning	Message element / Other comments
TRPDPLAN14	Error	The type of the planned place of delivery is different than a wholesaler, pharmacy or the healthcare facility	<rodzajMiejscaDostawy>
TRPDPLAN15	Error	The given identifier of the pharmaceutical wholesaler, indicated as the planned place of delivery, was not found in the Register of Pharmaceutical Wholesalers	<idMiejscaDostawy>
TRPDPLAN16	Error	The given pharmacy identifier, indicated as the intended place of delivery, was not found in the Pharmacy Register	<idMiejscaDostawy>
TRPDPLAN17	Error	The provided REGON (9 characters) of the healthcare entity, indicated as the planned place of delivery, was not found in the Register of Entities Performing Medicinal Activities	<idMiejscaDostawy>
TRPDPLAN18	Ostrzeżenie	The pharmacy indicated as the place of the planned delivery in the Register of Pharmacies does not have the active or pending status	<idMiejscaDostawy>
TRPDPLAN19	Ostrzeżenie	The wholesaler indicated as the place of the planned delivery in the Register of Pharmaceutical Wholesalers does not have the active or pending status	<idMiejscaDostawy>
TRPDPLAN20	Ostrzeżenie	The healthcare entity indicated as the place of the planned delivery in the the Register of Entities Performing Medicinal Activities does not have an active status	<idMiejscaDostawy>
TRPDPLAN20	Error	Do not provide a place of delivery for deliveries.	<miejsceDostawy>

## 7. Message header specification

Application of the reporting entities should send messages with signature and certificate used for signature. This information should be contained in the message header (<soapenv:Header>). The header should include the “wsse:Security” element to ensure security in the SOAP protocol. This element should have defined namespaces by adding of the following elements:

- xmlns:wsse="http://docs.oasis-open.org/wss/2004/01/oasis-200401-wss-wssecurity-secext-1.0.xsd"
- xmlns:wssu="http://docs.oasis-open.org/wss/2004/01/oasis-200401-wss-wssecurity-utility-1.0.xsd"

The “wsse:Security” element consists in the following elements:

- wsse:BinarySecurityToken element – containing the certificate chain with public key
  - Define the element: EncodingType="http://docs.oasis-open.org/wss/2004/01/oasis-200401-wss-soap-message-security-1.0#Base64Binary"
  - Define the element: ValueType="http://docs.oasis-open.org/wss/2004/01/oasis-200401-wss-x509-token-profile-1.0#X509PKIPathv1"
  - Define the element wsu:Id with unique element ID
- ds:Signature element – contains e-signature of the <soapenv:Body>section content
  - Define the namespace element: xmlns:ds="http://www.w3.org/2000/09/xmldsig#"
  - ds:SignedInfo element
    - ds:CanonicalizationMethod element
      - Define the element: Algorithm="http://www.w3.org/2001/10/xml-exc-c14n#"
    - element ds:SignatureMethod
      - Define the element: Algorithm="http://www.w3.org/2000/09/xmldsig#rsa-sha1"
    - ds:Reference element
      - Define the URI element, value of which is the reference for the soapenv:Body element (URI values should be identical to the value of wsu:Id attribute preceded with hash #)
      - Define the element: ds:Transforms
        - Define the element: ds:Transform
          - Define the element: Algorithm="http://www.w3.org/2001/10/xml-exc-c14n#"
      - Define the element: ds:DigestMethod
        - Define the element: Algorithm="http://www.w3.org/2000/09/xmldsig#sha1"
      - Define the element: ds:DigestValue
  - ds:SignatureValue element with signature value
  - ds:KeyInfo element
    - wsse:SecurityTokenReference element
      - wsse:Reference element

» Message header specification

- Define the URI element as a reference i.e. with the value identical as the value of wsu:Id of the wsse:BinarySecurityToken element preceded with hash.



## 8. Message status

You can check the verification status of previously sent messages in two ways. The first way is to use the portal, where in the "Komunikaty" section using a filter, you can search for the message we are interested in.

The second method is to use a dedicated service for this purpose, by sending a message, the structure of which is described in chapter 5.1.4.

### WebService address and WSDL in a production environment:

**WebService address:** <https://zsmopl.ezdrowie.gov.pl/cxf/statuskomunikatdmz/>

**WSDL:** <https://zsmopl.ezdrowie.gov.pl/cxf/statuskomunikatdmz?wsdl>

### WebService address and WSDL in the integration (evaluation) environment:

**WebService address:** <https://ewa-zsmopl.ezdrowie.gov.pl/cxf/statuskomunikatdmz/>

**WSDL:** <https://ewa-zsmopl.ezdrowie.gov.pl/cxf/statuskomunikatdmz?wsdl>

### 8.1. Example of a service call

#### zapytajOStatusKomunikatu – question about the status of the ID message =155204078562714774

```
<soapenv:Envelope xmlns:soapenv="http://schemas.xmlsoap.org/soap/envelope/"
xmlns:stat="http://cez.gov.pl/zsmopl/ws/statuskomunikatdmz/">
<soapenv:Header/>
<soapenv:Body>
  <stat:zapytajOStatusKomunikatu>
    <komunikat>
      <identyfikikatorKomunikatu>155204078562714774</identyfikikatorKomunikatu>
    </komunikat>
  </stat:zapytajOStatusKomunikatu>
</soapenv:Body>
</soapenv:Envelope>
```

## 8.2. Examples of correct answers

**Example of service response in case the message sent to ZSMOPL has the status „Poprawny”:**

```
<soap:Body wsu:Id="id-9BC23361F05BAF38B2155204079601511424" xmlns:wsu="http://docs.oasis-
open.org/wss/2004/01/oasis-200401-wss-wssecurity-utility-1.0.xsd">
  <ns2:statusOdpowiedz xmlns:ns2="http://cez.gov.pl/zsmopl/ws/statuskomunikatudmz/">
    <statusKomunikatu>
      <identyfikatorKomunikatu>155204078562714774</identyfikatorKomunikatu>
      <statusKomunikatu>Poprawny</statusKomunikatu>
    </statusKomunikatu>
  </ns2:statusOdpowiedz>
</soap:Body>
</soap:Envelope>
```

**Example of service response in case the message sent to ZSMOPL has the status „Poprawny z ostrzeżeniem”:**

```
<soap:Body wsu:Id="id-9BC23361F05BAF38B2155204137777611479" xmlns:wsu="http://docs.oasis-
open.org/wss/2004/01/oasis-200401-wss-wssecurity-utility-1.0.xsd">
  <ns2:statusOdpowiedz xmlns:ns2="http://cez.gov.pl/zsmopl/ws/statuskomunikatudmz/">
    <statusKomunikatu>
      <identyfikatorKomunikatu>155204136201040428</identyfikatorKomunikatu>
      <statusKomunikatu>Poprawny z ostrzeżeniami</statusKomunikatu>
      <transakcja>
        <dataCzasTransakcji>2019-02-26 23:58:15.06</dataCzasTransakcji>
        <lp>1</lp>
        <blad>
          <lpWTransakcji>1</lpWTransakcji>
          <kodBledu>TROSP0Z32</kodBledu>
          <opisBledu>Podany kod EAN produktu nie został znaleziony w rejestrze produktów
monitorowanych.</opisBledu>
          <wartoscBledna>00978020137962</wartoscBledna>
          <konsekwencja>Ostrzeżenie</konsekwencja>
        </blad>
      </transakcja>
    </statusKomunikatu>
  </ns2:statusOdpowiedz>
</soap:Body>
```

**Example of service response in case the message sent to ZSMOPL has the status „Błędny”, in case of errors at the transaction level or position in the transaction (TROS, TROSP0Z):**

```

<soap:Body wsu:Id="id-9BC23361F05BAF38B2155204019700111389" xmlns:wsu="http://docs.oasis-
open.org/wss/2004/01/oasis-200401-wss-wssecurity-utility-1.0.xsd">
  <ns2:statusOdpowiedz xmlns:ns2="http://cez.gov.pl/zsmopl/ws/statuskomunikatudmz/">
    <statusKomunikatu>
      <identyfikatorKomunikatu>155204018194534477</identyfikatorKomunikatu>
      <statusKomunikatu>Błędny</statusKomunikatu>
      <transakcja>
        <dataCzasTransakcji>2019-02-26 23:58:15.06</dataCzasTransakcji>
        <lp>1</lp>
        <blad>
          <lpWTransakcji>1</lpWTransakcji>
          <kodBledu>TROSP0Z44</kodBledu>
          <opisBledu>Nie podano informacji o stanach magazynowych, która jest wymagana dla podanego
rodzaju transakcji.</opisBledu>
          <konsekwencja>Błąd</konsekwencja>
        </blad>
      </transakcja>
      <transakcja>
        <dataCzasTransakcji>2019-02-26 23:58:35.746</dataCzasTransakcji>
        <lp>2</lp>
        <blad>
          <lpWTransakcji>4</lpWTransakcji>
          <kodBledu>TROSP0Z70</kodBledu>
          <opisBledu>Podany kod EAN produktu jest niepoprawny.</opisBledu>
          <wartoscBledna>blad05909990637997</wartoscBledna>
        <konsekwencja>Błąd</konsekwencja>
      </blad>
    </transakcja>
  </statusKomunikatu>
</ns2:statusOdpowiedz>
</soap:Body>
</soap:Envelope>

```

**Example of service response in case the message sent to ZSMOPL has the status „Błędny”, in case of errors at the message header level (KM):**

```
<ns2:statusOdpowiedz xmlns:ns2="http://cez.gov.pl/zsmopl/ws/statuskomunikatudz/">
  <statusKomunikatu>
    <identyfikatorKomunikatu>155240368954014534</identyfikatorKomunikatu>
    <statusKomunikatu>Błędny</statusKomunikatu>
    <blad>
      <kodBledu>KM2</kodBledu>
      <opisBledu> Wystąpiła niezgodność pomiędzy elementami: identyfikator podmiotu raportującego,
rodzaj podmiotu raportującego, identyfikator miejsca prowadzenia działalności podmiotu raportującego,
rodzaj miejsca prowadzenia działalności podmiotu raportującego.</opisBledu>
      <wartoscBledna>A001377706; AP; 1011; MPDAP</wartoscBledna>
      <konsekwencja>Błąd</konsekwencja>
    </blad>
  </statusKomunikatu>
</ns2:statusOdpowiedz>
</soap:Body>
</soap:Envelope>
```

**Example of service response in case the message sent to ZSMOPL has the status „Wycofany”:**

```
</soap:Header>
<soap:Body wsu:Id="id-9bdfb9e1-bfe8-441a-b081-aa796d9b0315" xmlns:wsu="http://docs.oasis-
open.org/wss/2004/01/oasis-200401-wss-wssecurity-utility-1.0.xsd">
  <ns2:statusOdpowiedz xmlns:ns2="http://cez.gov.pl/zsmopl/ws/statuskomunikatudz/">
    <statusKomunikatu>
      <identyfikatorKomunikatu>156213931421954879</identyfikatorKomunikatu>
      <statusKomunikatu>Wycofany</statusKomunikatu>
    </statusKomunikatu>
  </ns2:statusOdpowiedz>
</soap:Body>
</soap:Envelope>
```

### 8.3. GetStatus error messages

Example of service response if the request is signed with a certificate not registered in ZSMOPL:

```
</soap:Header>
<soap:Body wsu:Id="id-d7497e2c-a946-43fe-a50b-e4b093f3a428" xmlns:wsu="http://docs.oasis-
open.org/wss/2004/01/oasis-200401-wss-wssecurity-utility-1.0.xsd">
  <ns2:statusOdpowiedz xmlns:ns2="http://cez.gov.pl/zsmopl/ws/statuskomunikatudmz/">
    <statusKomunikatu>
      <identyfikatorKomunikatu>156198234009905662</identyfikatorKomunikatu>
      <statusKomunikatu>Brak autoryzacji: Certyfikat nie został zarejestrowany</statusKomunikatu>
    </statusKomunikatu>
  </ns2:statusOdpowiedz>
</soap:Body>
</soap:Envelope>
```

An example of a service response if the question relates to a non-existing message number or a message from another entity:

```
</soap:Header>
<soap:Body wsu:Id="id-d7497e2c-a946-43fe-a50b-e4b093f3a428" xmlns:wsu="http://docs.oasis-
open.org/wss/2004/01/oasis-200401-wss-wssecurity-utility-1.0.xsd">
  <ns2:statusOdpowiedz xmlns:ns2="http://cez.gov.pl/zsmopl/ws/statuskomunikatudmz/">
    <statusKomunikatu>
      <identyfikatorKomunikatu>156198234009905662</identyfikatorKomunikatu>
      <statusKomunikatu>Identyfikator komunikatu jest niepoprawny, nie istnieje lub oczekuje na
przetworzenie</statusKomunikatu>
    </statusKomunikatu>
  </ns2:statusOdpowiedz>
</soap:Body>
</soap:Envelope>
```

Example of service response in case of internal ZSMOPL error:

```
</soap:Header>
<soap:Body wsu:Id="id-d7497e2c-a946-43fe-a50b-e4b093f3a428" xmlns:wsu="http://docs.oasis-
open.org/wss/2004/01/oasis-200401-wss-wssecurity-utility-1.0.xsd">
  <ns2:statusOdpowiedz xmlns:ns2="http://cez.gov.pl/zsmopl/ws/statuskomunikatudmz/">
    <statusKomunikatu>
      <identyfikatorKomunikatu>156198234009905662</identyfikatorKomunikatu>
      <statusKomunikatu>Wystąpił błąd połączenia z serwerem wewnętrznym. Proszę spróbować
ponownie później</statusKomunikatu>
    </statusKomunikatu>
  </ns2:statusOdpowiedz>
```



» Message status

```
</soap:Body>  
</soap:Envelope>
```



## 9. Stock inquiry

A request for warehouse status enables verification of warehouse statuses sent earlier by means of turnover and state messages (OS). The service is available through Webservice. The request must be confirmed with a current certificate of the entity.

### WebService address and WSDL in a production environment:

**WebService address:** <https://zsmopl.ezdrowie.gov.pl/cxf/stanydmz>

**WSDL:** <https://zsmopl.ezdrowie.gov.pl/cxf/stanydmzz?wsdl>

### WebService address and WSDL in the integration (evaluation) environment:

**WebService address:** <https://ewa-zsmopl.ezdrowie.gov.pl/cxf/stanydmz>

**WSDL:** <https://ewa-zsmopl.ezdrowie.gov.pl/cxf/stanydmz?wsdl>

The number of queries is limited in time, and depends on the environment, i.e. other parameters are set on the production environment and others on the evaluation environment. Information about current settings is available on the CeZ website, in the KOMUNIKATY tab.

### 9.1. Example of a service call

```
<soapenv:Envelope xmlns:soapenv="http://schemas.xmlsoap.org/soap/envelope/"
xmlns:stan="http://cez.gov.pl/zsmopl/ws/stanydmz/">
  <soapenv:Header/>
  <soapenv:Body>
    <stan:zapytajOStanyMagazynowe>
      <komunikat>
        <idPodmiotuRaportujacego>
          <idBiznesowy>35259497</idBiznesowy>
          <rodzajPodmiotuRaportujacego>AP</rodzajPodmiotuRaportujacego>
        </idPodmiotuRaportujacego>
        <idMPDPodmiotuRaportujacego>
          <idBiznesowy>1111111</idBiznesowy>
          <rodzajMPDPodmiotuRaportujacego>MPDAP</rodzajMPDPodmiotuRaportujacego>
        </idMPDPodmiotuRaportujacego>
      </komunikat>
    </stan:zapytajOStanyMagazynowe>
  </soapenv:Body>
</soapenv:Envelope>
```

```
<soapenv:Envelope xmlns:soapenv="http://schemas.xmlsoap.org/soap/envelope/"
xmlns:stan="http://cez.gov.pl/zsmopl/ws/stanydmz/">
  <soapenv:Header/>
  <soapenv:Body>
    <stan:zapytajOStanyMagazynowe>
      <komunikat>
        <idPodmiotuRaportujacego>
          <idBiznesowy>395182791</idBiznesowy>
          <rodzajPodmiotuRaportujacego>HU</rodzajPodmiotuRaportujacego>
        </idPodmiotuRaportujacego>
        <idMPDPodmiotuRaportujacego>
          <idBiznesowy>900001</idBiznesowy>
          <rodzajMPDPodmiotuRaportujacego>MPDHU</rodzajMPDPodmiotuRaportujacego>
        </idMPDPodmiotuRaportujacego>
      </komunikat>
    </stan:zapytajOStanyMagazynowe>
  </soapenv:Body>
</soapenv:Envelope>
```

## 9.2. Service call and response examples with correct parameters

**Example of response, when call parameters are correct and MPD has warehouse states:**

```
<soap:Body wsu:Id="id-dd72490a-2539-4dde-99d2-36350acaf6f1" xmlns:wsu="http://docs.oasis-
open.org/wss/2004/01/oasis-200401-wss-wssecurity-utility-1.0.xsd">
  <ns2:stanyMagazynoweOdpowiedz xmlns:ns2="http://cez.gov.pl/zsmopl/ws/stanydmz/">
    <stanyMagazynowe>
      <statusZapytania>Zapytanie poprawne</statusZapytania>
      <liczbaPozostalychZapytan>1</liczbaPozostalychZapytan>
      <stan>
        <ean>05909990651535</ean>
        <numerSerii>Seria2</numerSerii>
        <stanIloscDostepny>63298.0000</stanIloscDostepny>
        <stanIloscDostepnySeria>11489.00000</stanIloscDostepnySeria>
        <stanIloscWstrzWycof>0.0000</stanIloscWstrzWycof>
        <stanIloscWstrzWycofSeria>0.0000</stanIloscWstrzWycofSeria>
        <dataCzasTransakcji>2019-09-17T00:00:00.000+02:00</dataCzasTransakcji>
      </stan>
      <stan>
        <ean>05909990651535</ean>
        <numerSerii>Seria1</numerSerii>
```

```

<stanIloscDostepny>7984368671.0000</stanIloscDostepny>
<stanIloscDostepnySeria>2.00000</stanIloscDostepnySeria>
<stanIloscWstrzWycof>0.0000</stanIloscWstrzWycof>
<stanIloscWstrzWycofSeria>0.0000</stanIloscWstrzWycofSeria>
<dataCzasTransakcji>2019-08-01T11:00:10.000+02:00</dataCzasTransakcji>
</stan>
</stanyMagazynowe>
</ns2:stanyMagazynoweOdpowiedz>
</soap:Body>

```

**Note:** The current product status is given in the item `<stanIloscDostepny>` in the section with the latest `<dataCzasTransakcji>`, in this example, it is the date =2019-09-17T00:00:00.000+02:00.

The states of the `<stanIloscDostepnySeria>` series are valid every time.

Similarly for suspended states.

**Example of response when call parameters are correct and MPD is not in stock:**

```

<soap:Body wsu:Id="id-251de460-c405-4bb8-8363-6098607cc899" xmlns:wsu="http://docs.oasis-
open.org/wss/2004/01/oasis-200401-wss-wssecurity-utility-1.0.xsd">
  <ns2:stanyMagazynoweOdpowiedz xmlns:ns2="http://cez.gov.pl/zsmopl/ws/stanydmz/">
    <stanyMagazynowe>
      <statusZapytania>Nie znaleziono stanów magazynowych</statusZapytania>
      <liczbaPozostalychZapytan>5</liczbaPozostalychZapytan>
    </stanyMagazynowe>
  </ns2:stanyMagazynoweOdpowiedz>
</soap:Body>

```

**Example of response when call parameters are correct but query limit has been exceeded.**

```

<soap:Body wsu:Id="id-bc8186cc-f8c7-4d19-abd8-0350e0918619" xmlns:wsu="http://docs.oasis-
open.org/wss/2004/01/oasis-200401-wss-wssecurity-utility-1.0.xsd">
  <ns2:stanyMagazynoweOdpowiedz xmlns:ns2="http://cez.gov.pl/zsmopl/ws/stanydmz/">
    <stanyMagazynowe>
      <statusZapytania>Przekroczono limit zapytan. Następane zapytanie możliwe: 2019-10-17
11:42:41.985</statusZapytania>
    </stanyMagazynowe>
  </ns2:stanyMagazynoweOdpowiedz>
</soap:Body>

```

### 9.3. Service getStan error messages

#### Answer when the call parameters are incorrect:

```
<soap:Body wsu:Id="id-f843a509-f101-4fbf-8aee-3674ee830784" xmlns:wsu="http://docs.oasis-open.org/wss/2004/01/oasis-200401-wss-wssecurity-utility-1.0.xsd">
  <ns2:stanyMagazynoweOdpowiedz xmlns:ns2="http://cez.gov.pl/zsmopl/ws/stanydmz/">
    <stanyMagazynowe>
      <statusZapytania>Wystąpiła niezgodność pomiędzy elementami: identyfikator podmiotu raportującego, rodzaj podmiotu raportującego, identyfikator miejsca prowadzenia działalności podmiotu raportującego, rodzaj miejsca prowadzenia działalności podmiotu raportującego</statusZapytania>
    </stanyMagazynowe>
  </ns2:stanyMagazynoweOdpowiedz>
</soap:Body>
```

#### Answer when the question was signed with a certificate not registered in ZSMOPL:

```
<soap:Body wsu:Id="id-7523d8ec-0751-40e2-a3b3-d52eb8b71a1d" xmlns:wsu="http://docs.oasis-open.org/wss/2004/01/oasis-200401-wss-wssecurity-utility-1.0.xsd">
  <ns2:stanyMagazynoweOdpowiedz xmlns:ns2="http://cez.gov.pl/zsmopl/ws/stanydmz/">
    <stanyMagazynowe>
      <statusZapytania>Brak autoryzacji: Certyfikat nie został zarejestrowany</statusZapytania>
    </stanyMagazynowe>
  </ns2:stanyMagazynoweOdpowiedz>
</soap:Body>
```

#### Example of service response in case of internal ZSMOPL error:

```
<soap:Envelope xmlns:soap="http://schemas.xmlsoap.org/soap/envelope/">
  <soap:Body>
    <soap:Fault>
      <faultcode>soap:Server</faultcode>
      <faultstring>Wystąpił błąd wewnętrzny systemu, proszę spróbować ponownie później.</faultstring>
      <detail>
        <bładDostepnosi xmlns="http://cez.gov.pl/zsmopl/ws/stanydmz/" />
      </detail>
    </soap:Fault>
  </soap:Body>
</soap:Envelope>
```

## 10. STN transaction

The STN transaction is a specific transaction that facilitates the reporting of an entity's inventory. By using the STN transaction, we have the option of summarizing the stock levels of all products that we have traded during the day at the end of the day, instead of providing these stocks each time with each transaction changing the stock level. As a result, the amount of data sent to ZSMOPL is reduced, and inventory reporting becomes easier.

If you want to report stock levels using STN transactions, you must define one STN transaction in the message, and provide items in it for all product series that appeared in previous transactions.

If you want to use inventory reporting with the use of STN transactions, you should remember a few rules:

- There can be only one STN transaction. If we want to use it, it must appear as the last in the sent message, i.e. have the highest lp number from all transactions in the message, and there must be no subsequent transaction in the message. Otherwise, the KM9 error "STN transaction must be the last transaction in the message" will be reported
- All products and their series that appeared in the sent message must appear in the STN transaction. If an item in the STN transaction with status information is not created for a product series that occurred in any of the previous transactions, the error TROSP0Z83 - "No information about stock levels in the STN transaction was reported"
- When using the STN transaction, the stock levels should be entered in it and only in it. If the STN transaction appears in the message, while specifying the stock levels in previous transactions, the warning TROSP0Z84 will be reported - "The transaction item contains information about stock levels that was not required using the STN transaction". At the same time, the occurrence of the STN transaction in the message means that the TROSP0Z44 error is not reported for the transaction item, which means that there is no information about stock levels. The TROSP0Z44 error can be reported if a transaction item with no statuses is entered in the STN transaction itself.
- In the STN transaction, only the stock levels of these products and their series, which occurred in the previous transactions, should be given. If you specify a status in the STN transaction for a product series that did not occur in previous transactions, the warning TROS85 will be reported - "Product inventory levels have been entered and it does not appear in any transaction"